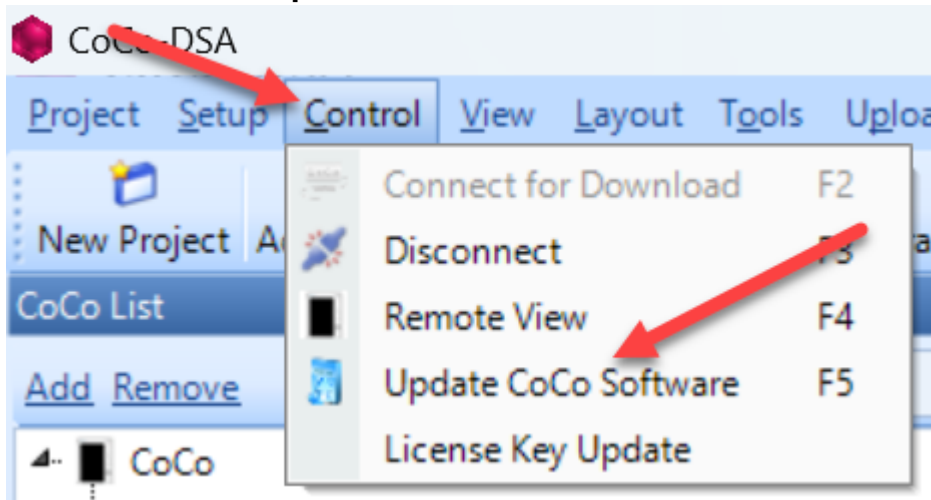


# Update CoCo

The following procedure is applicable to all CoCo device types: CoCo-80, CoCo-70X, CoCo-80X, and CoCo-90X.

1. On a PC, open up EDM CoCo-DSA.
2. Connect to the CoCo device. If help is needed, see our guide [here](#).
3. Go to **Control** → **Update CoCo Software**.



4. Browse and insert the **.bin** file for the update package.

### Update CoCo Software

Locate the update package with browse button

C:\Users' \Downloads\CoCo80X\_4186912\_20240521.bin

Copy the license key into the following box and click the update button

Update message

Current progress:

Total progress:

5. Paste the update license key into the field. **NOTE:** This is not the same as the standard license file.

Update CoCo Software

Locate the update package with browse button

C:\Users\ Downloads\CoCo80X\_4186912\_20240521.bin Browse

Copy the license key into the following box and click the update button

DC078A96F1D243436CA1B5D3A01F721BE11213D10FED6ED8

Update message

Current progress: Update

Total progress: Close

**IMPORTANT:** The .bin file and updated license key can be found in the [Customer Support Portal](#). If you need help logging in, please contact **support\*go-ci.com**.

**Application Software**

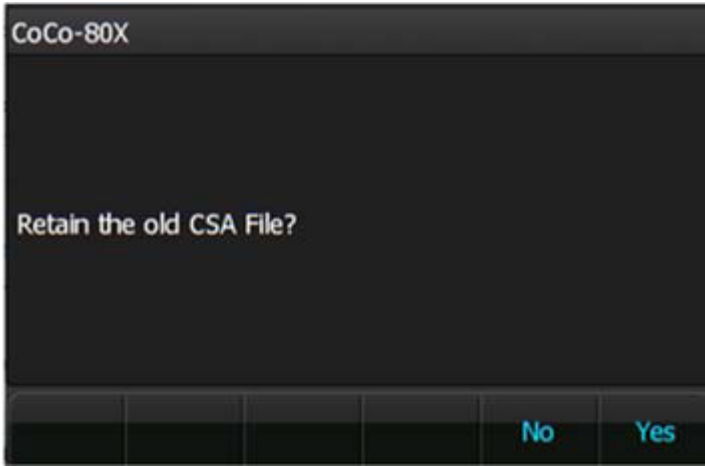
Software Item	Description	Size	Published Version	Published Time	MD5 code	Action
CoCo-80X Application	Application software runs on the CoCo-80X. The update can be conducted on the CoCo-80X when it is connected to the Internet.	7.41 MB	2.4.2	Jan 08, 2024	2.2.0	<a href="#">View Instructions</a> <a href="#">Download Bin File</a> Update Key: DC078A96F1D2434 36CA1B5D3A01F72 1BE11213D10FED6 ED8

**.bin file**

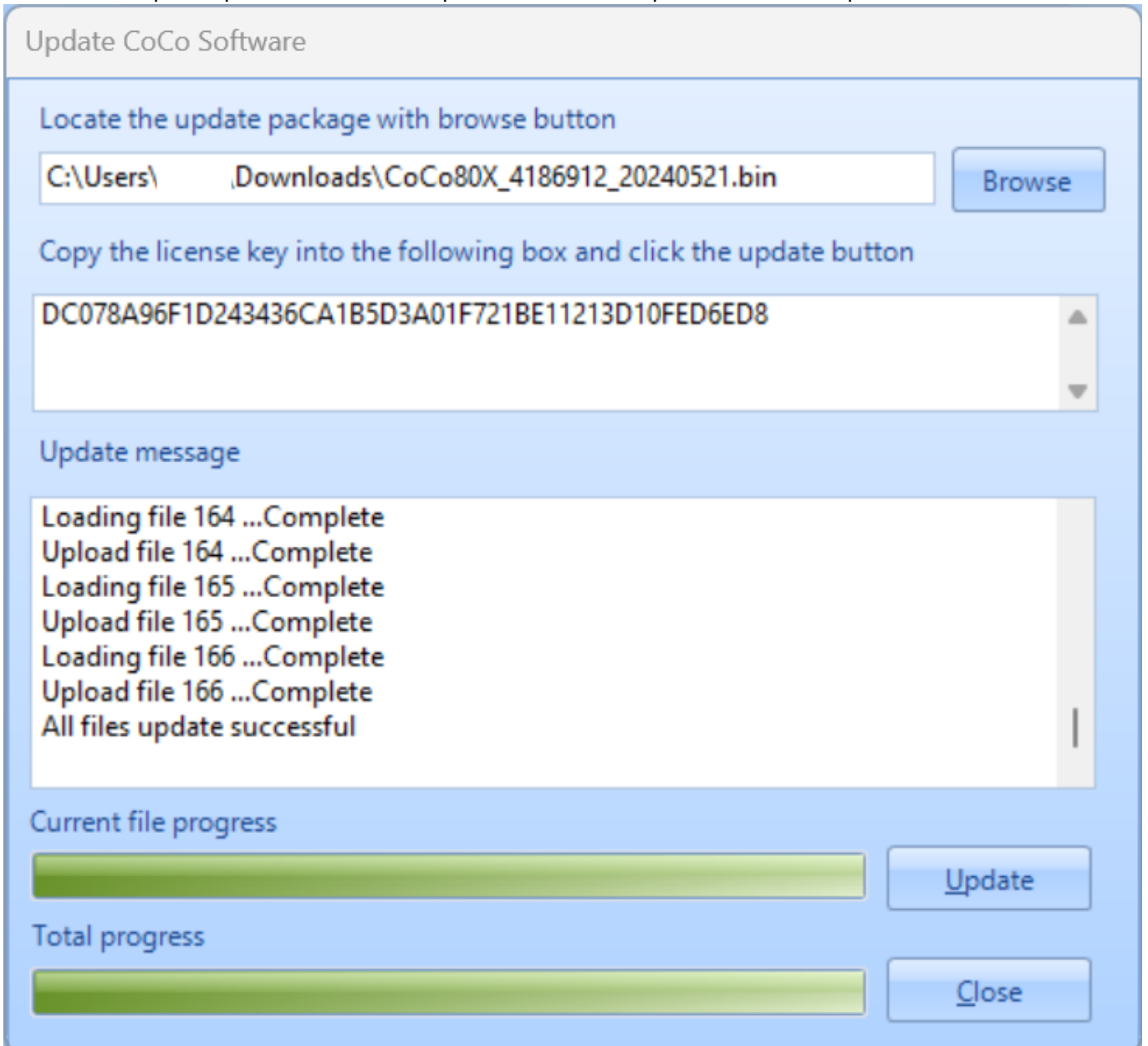
**Update License Key**

6. Press **Update**.

7. During the update, the following message will display on the CoCo display. **IMPORTANT:** Press YES or KEEP to retain and keep all the current CSA settings and parameters for all of the tests on the unit. Pressing NO or RESET will replace all CSAs with the factory default version.



8. Once the update process is finished, press **Close**. The update is now complete.



From:  
<https://help.go-ci.com/> - **Crystal Instruments Help**

Permanent link:  
<https://help.go-ci.com/coco:update>

Last update: **2024/05/21 17:39**