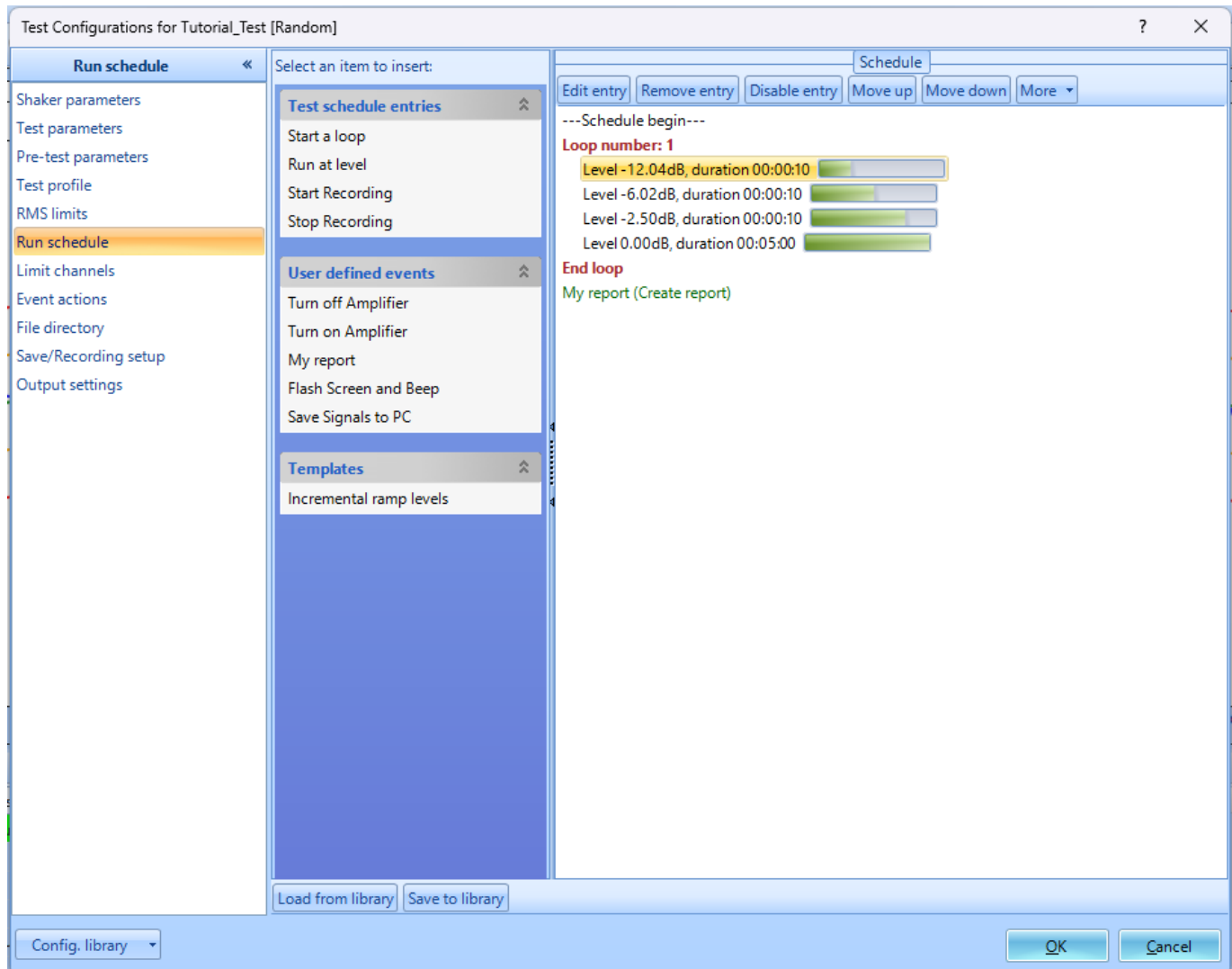


Schedule Automated Tests

The **Run Schedule** defines how the test is run automatically through a preset routine. This schedule can support loops and periods of running at a specified level and duration. Different test types will have different entries that can be added.

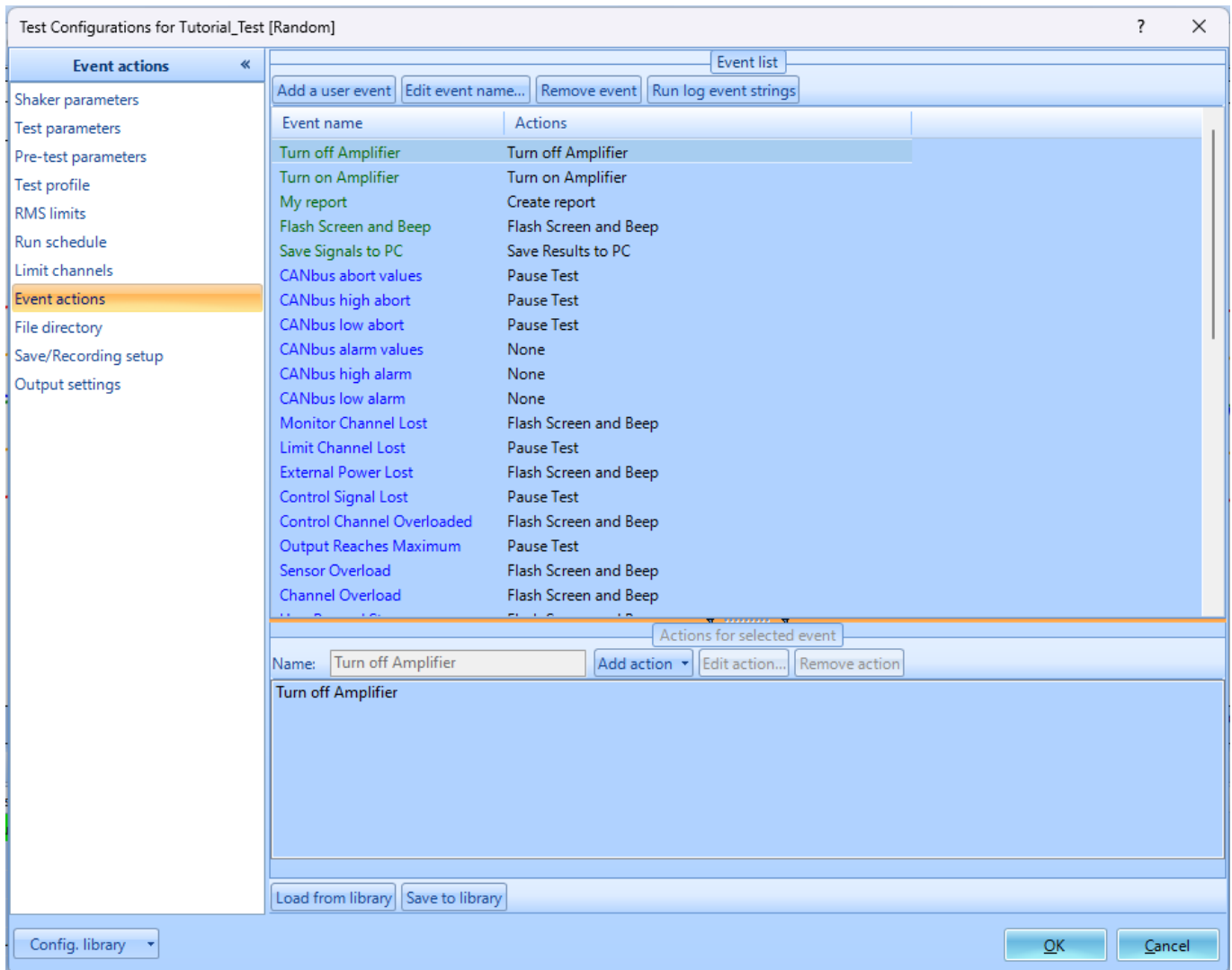
To get to the Run Schedule, in the **Control Panel**, click **Config > Run Schedule**.



To add entries to the schedule, click the event names located on the left. The buttons on the top of the schedule can be used to edit events. Events within the schedule can also be rearranged by clicking and dragging.

Event Actions

To see more events to add in the Run Schedule, click **Config > Event actions**.



Custom user events can be added by clicking **Add a user event** > **Enter Event name** > Click **OK** > Click **Add Action** > choose the action to be added. The events support multiple actions and will execute based on the order added.

Once the custom action is created, it will be located in the **User defined events** in the Run Schedule.

Test Sequence

The test sequence provides an automated way to run multiple test ins in a predefined sequence. This can be used when multiple tests are to be executed consecutively without manual intervention.

To setup test sequences, click **Setup > Test Sequence**

Editing the Sequence

Click on **Edit sequence** to add or remove tests, define loops, or adjust the order of tests in the sequence. Tests can be set to repeat for a specified number of loops or to run in a specific order. Within the sequence, you can also add in a Switch System option to change the spider system that you want to execute. After adding the **Switch System** item into the Test schedule, **double click the**

entry in the test schedule, **select the spider system**, and click **OK**.

After configuring the sequence, save the setup. Click **Start** to run the entire sequence automatically or **Start from selected test** to begin from a specific point in the sequence.

From:

<https://help.go-ci.com/> - **Crystal Instruments Help**

Permanent link:

<https://help.go-ci.com/general:automatetests>

Last update: **2024/12/13 16:02**