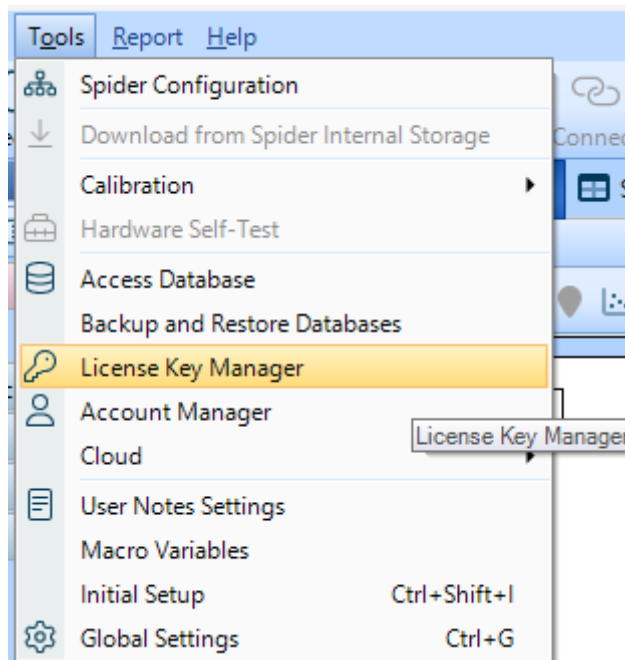
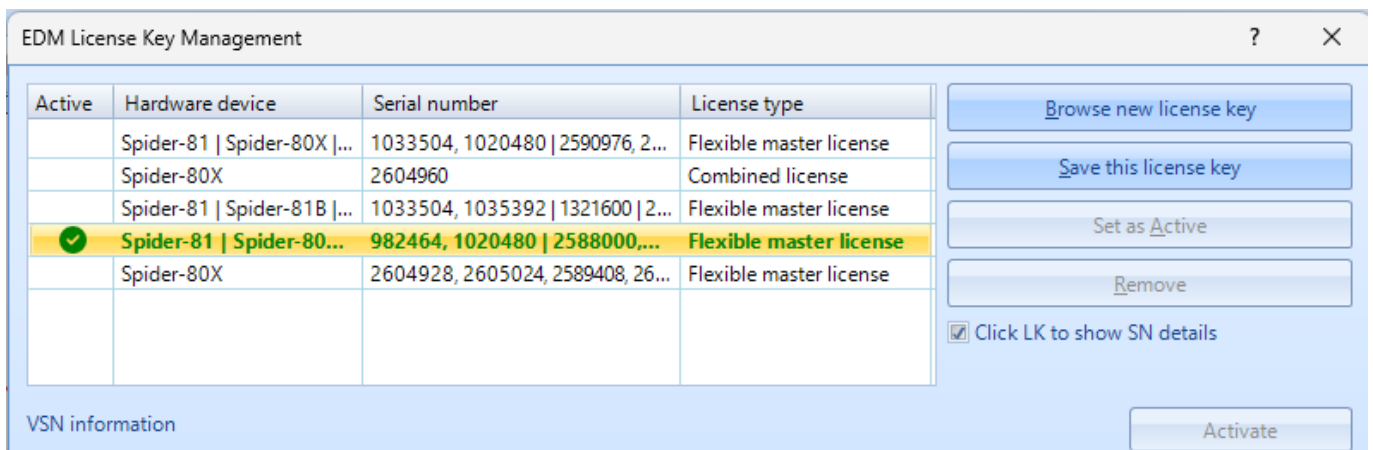


U

In EDM, click **Tools > License Key Manager**



Click **Browse new license key** and select your license



Close the window and EDM will restart to apply the license key change

From: <https://help.go-ci.com/> - **Crystal Instruments Help**

Permanent link: <https://help.go-ci.com/general:updatelk?rev=1732219829>

Last update: **2024/11/21 20:10**