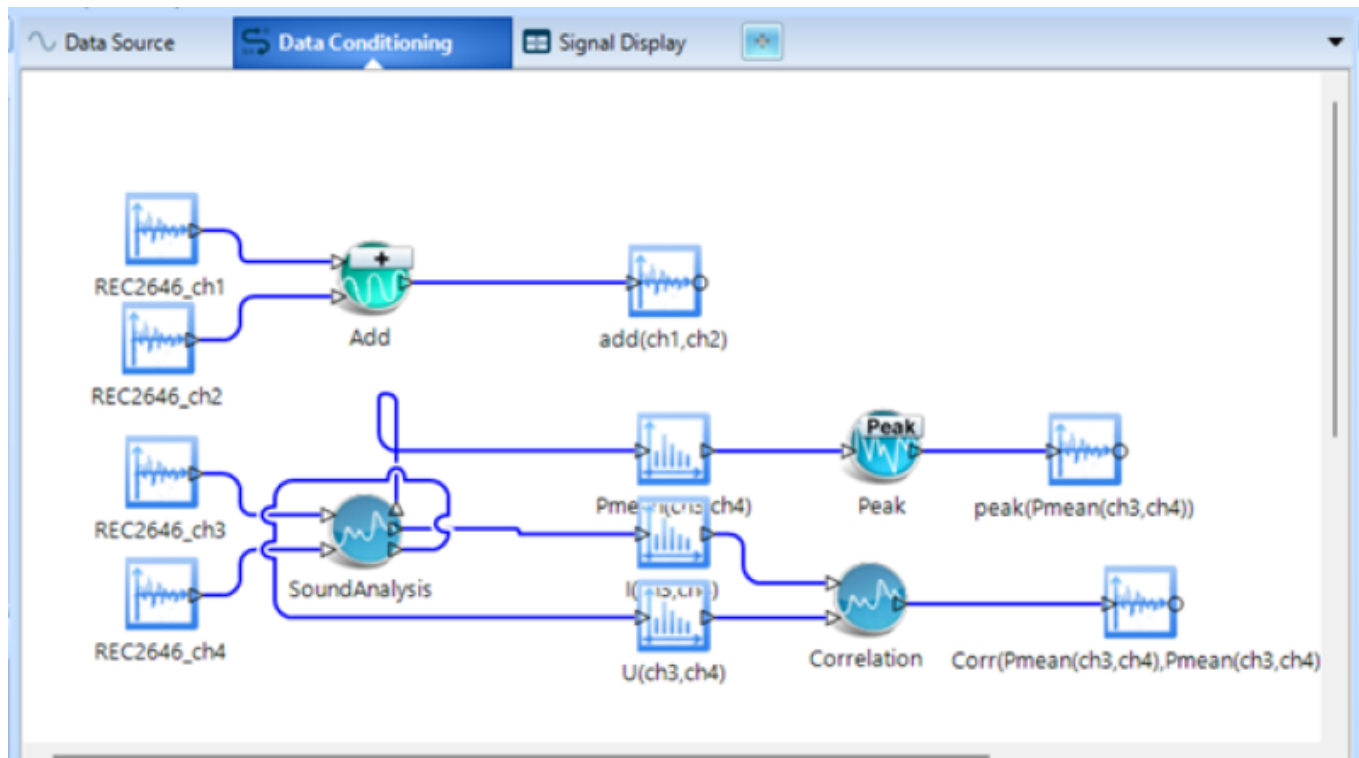


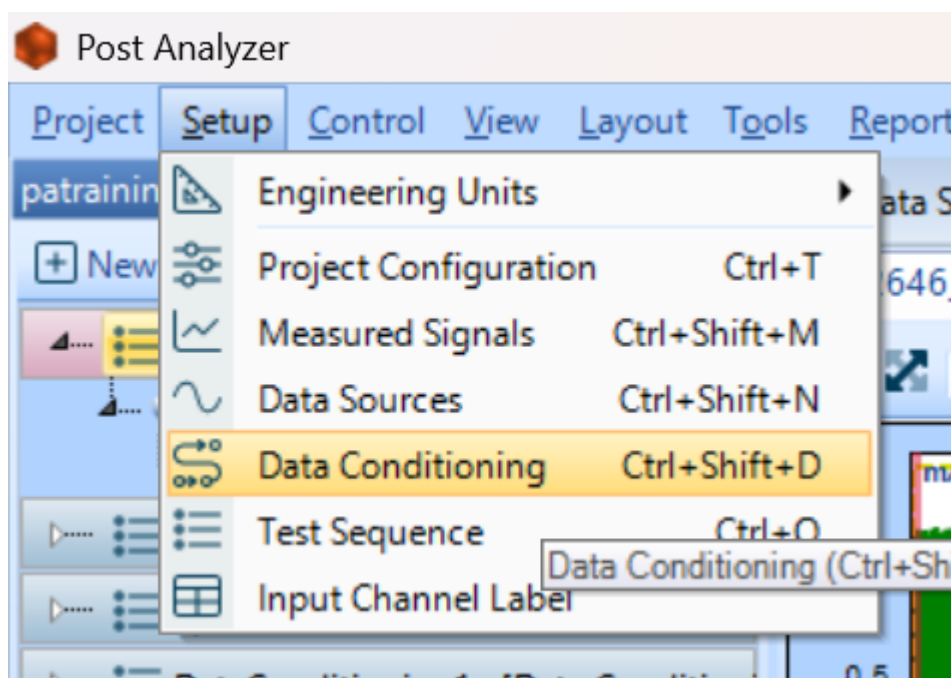
# Data Conditioning

Supported by FFT Spectral Analysis, Time-Stamp, Order-Tracking, Sine Reduction & Basic Signal-Conditioning support data conditioning features. Data Conditioning supports functions to control and process data using a logic gate structure.



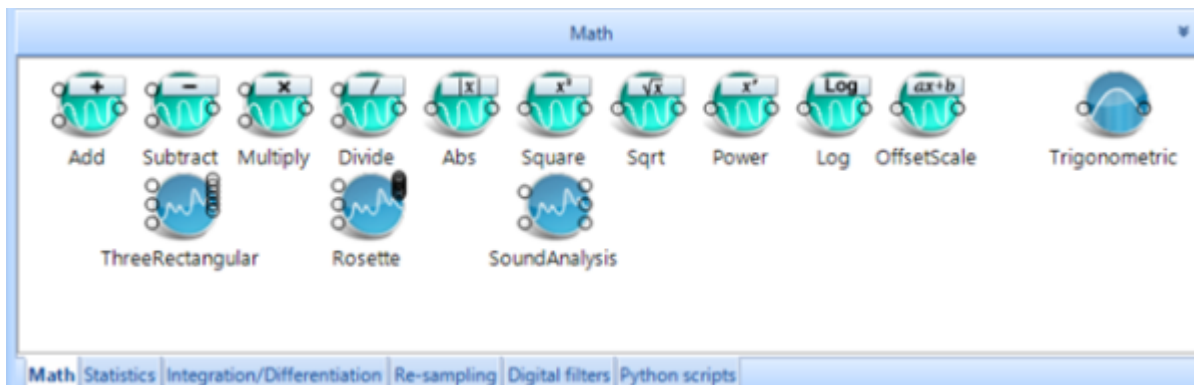
Follow the guided steps below to understand and use the data conditioning functionality in Post Analyzer

Data conditioning tabs can be opened through the Setup → Data Conditioning dropdown, or the user can press Ctrl+Shift+D.



Data Conditioning has several tabs each with different module types.

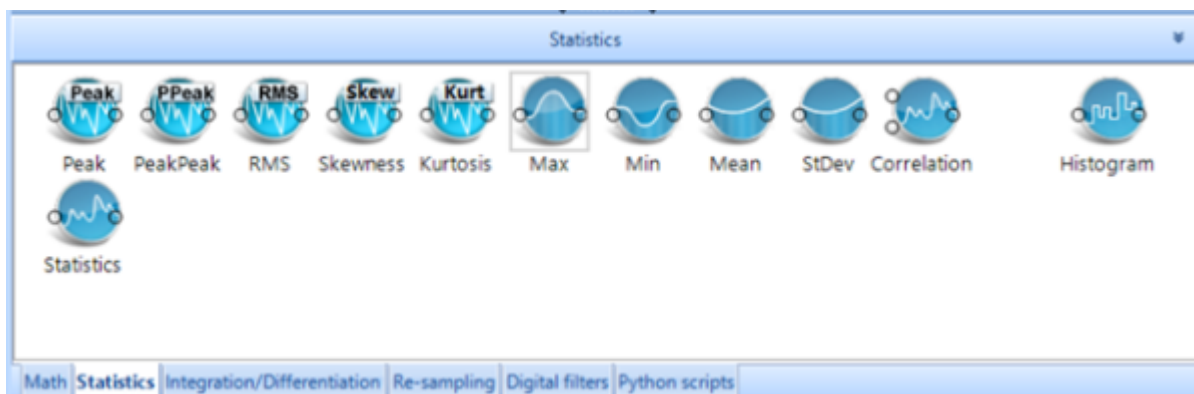
## Math



Math modules include basic arithmetic operations such as Add, Subtract, Multiply, Square etc., and a few more complex operations.

Offset Scale provides a scalar multiplication and additive offset to input channel. Functions as a gain+ bias operator ThreeRectangular supports a three-element strain gauge. Calculating principal strains, stresses, angle of orientation, and max shear. Rosette supports 3-gage rosette for both 3 element and delta types. Outputs equivalent strain in x, y, and shear planes, principal plane angle, principal stress & strains, and maximum shear strain. Sound Analysis calculates sound pressure, sound intensity and vibration velocity.

## Statistics

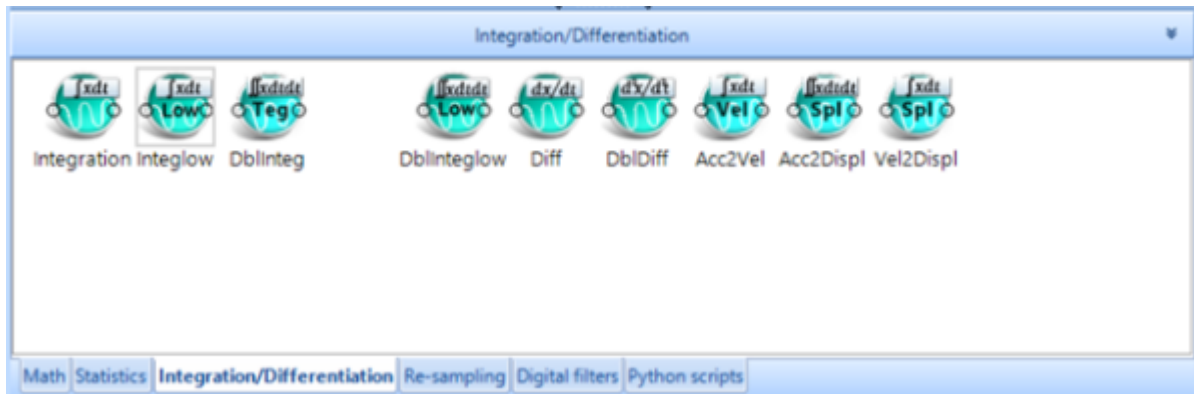


Statistics supports a variety of functions used in data interpretation. Including several common functions i.e. Min, Max, Mean. It also supports more specialized operations: Peak to Peak operator saves the greatest displacement between signal minimum and maximum of oscillation during time

block. RMS calculates the effective signal strength over a period.

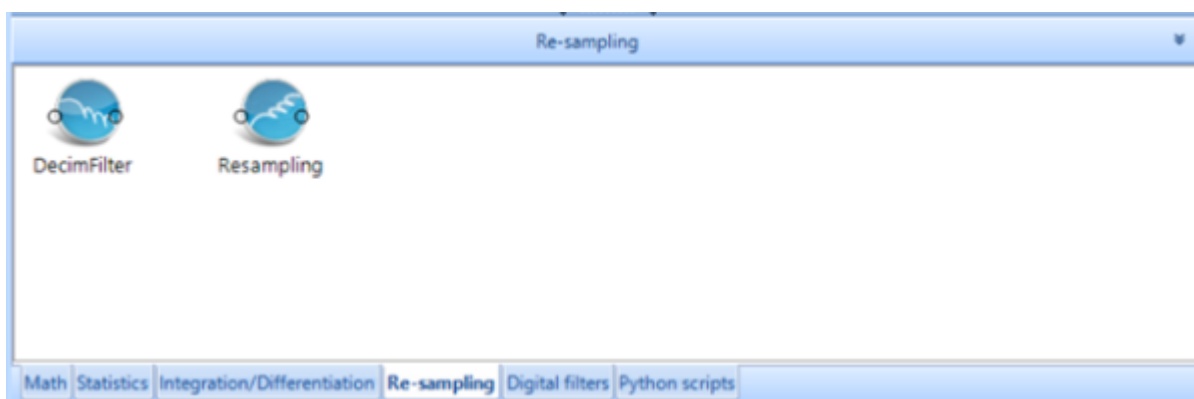
$$x_{\text{RMS}} = \sqrt{\frac{1}{n} (x_1^2 + x_2^2 + \dots + x_n^2)}$$

## Integration/Differentiation



Integration/Differentiation modules behave as anticipated with a couple extra features. The modules which include the term low, such as Integlow conduct the same operation as the parent feature, Integral, but include an additional low-pass filter which can be customized by right clicking on the modules and left clicking Edit Analysis Parameter. Dblinteg works as shown in the equation, it integrates the time signal twice. The same naming standard is used for the Differentiation modules.

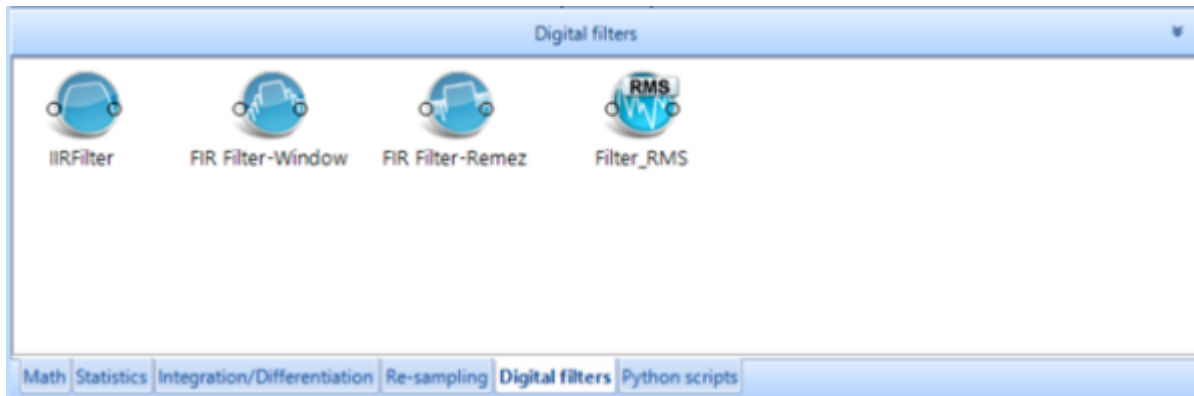
## Re-sampling



DecimFilter the decimator filter reduces the amount of time domain point to make computing more efficient. The data is put through a low pass anti-alias filter and then every nth point is kept. Resampling filter updates the sample to be L/M. The input time stream data is up sampled by L, there are L-1 data points filled in with zeros between time stream data input points. Next, Low pass anti-aliasing filter is applied. Finally, the data is downsampled by M. Every Mth point is kept.

## Digital Filters

Digital filters are typically used to create bandwidth filters so that only data from desired areas of the frequency spectrum are shown. The type of filter and creation determine the characteristics and performance of the filter.



Finite Impulse Response filters: Have a set time duration of response. FIR filters do not have a feedback loop and feature a constant group delay. This means that an input signal will have a uniformly delayed output and will have no distortion. FIR filters are defined by:

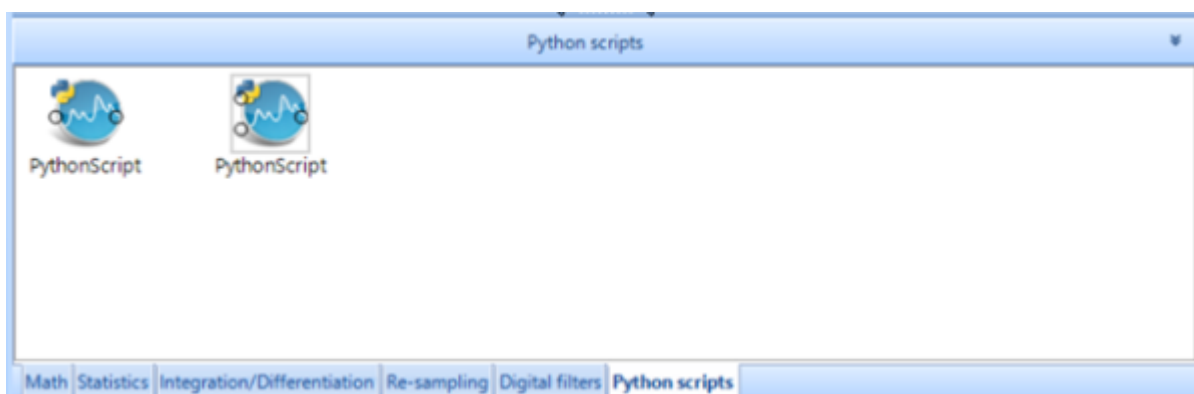
$$y[n] = b_0x[n] + b_1x[n - 1] + \dots + b_Nx[n - N]$$

FIR Filter-Window is the simplest method of constructing a FIR filter. Filters are created by scaling a sinc function. It begins with a perfect passband filter and is constructed with filter coefficients to generate a desired frequency response. FIR Filter-Remez are generated from computationally intensive error reducing algorithms which reduce passband error. Infinite Impulse Response (IIR) filters are defined to last forever and decay slowly. Defined by the equation:

$$y[n] = b_0x[n] + b_1x[n - 1] + \dots + b_px[n - P] - a_1y[n - 1] - \dots - a_qy[n - Q]$$

There is no set method of creation for IIR filters. In PA the user defines the decimation filter, filter type, filter order, analog prototype, and cutoff frequencies. Filter\_RMS closely resembles the output of 1/N octave filters but with greater flexibility. Users can design any filter and examine the RMS. Functionally the same as computing the RMS after applying an RMS filter.

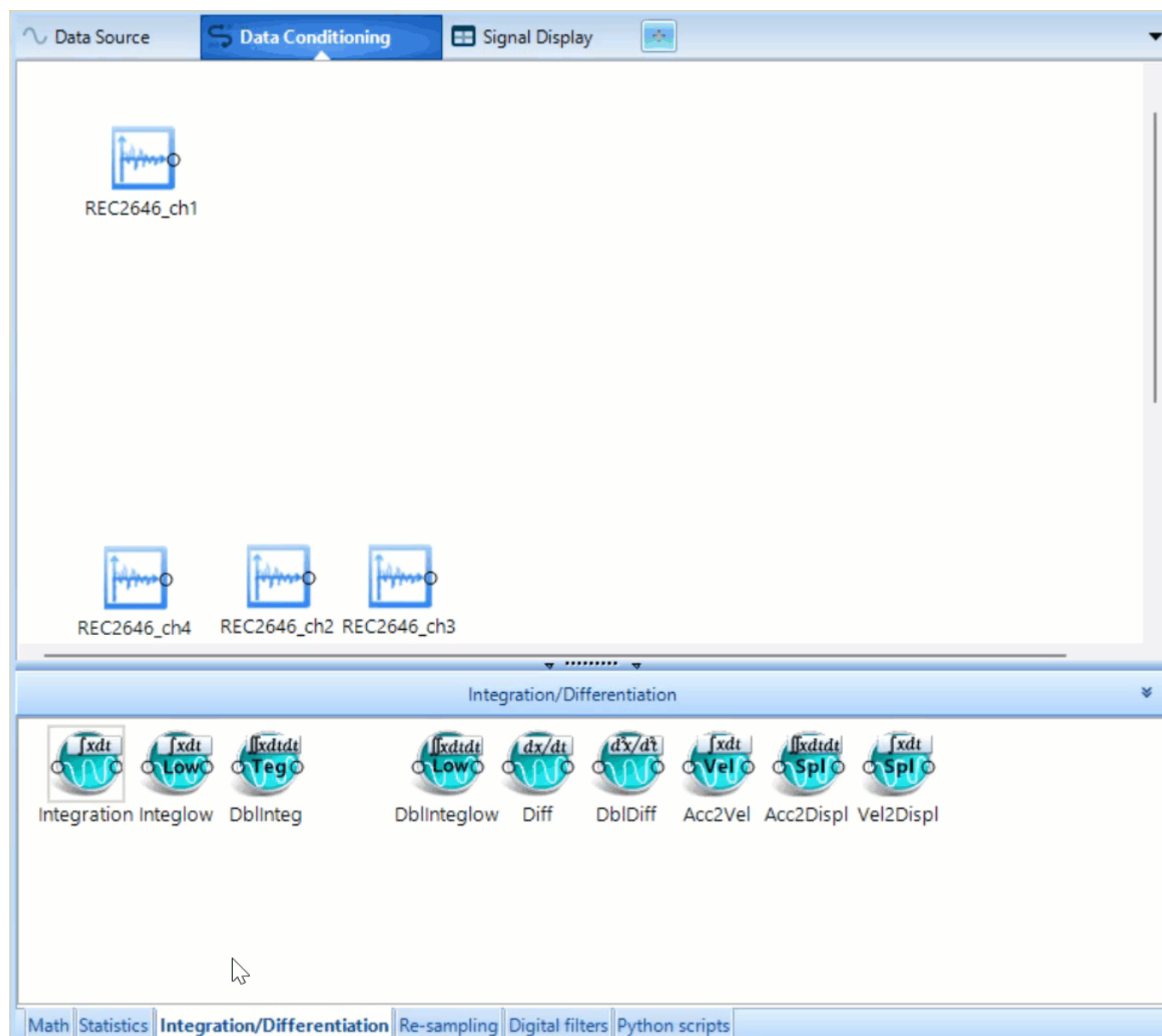
## Python Script

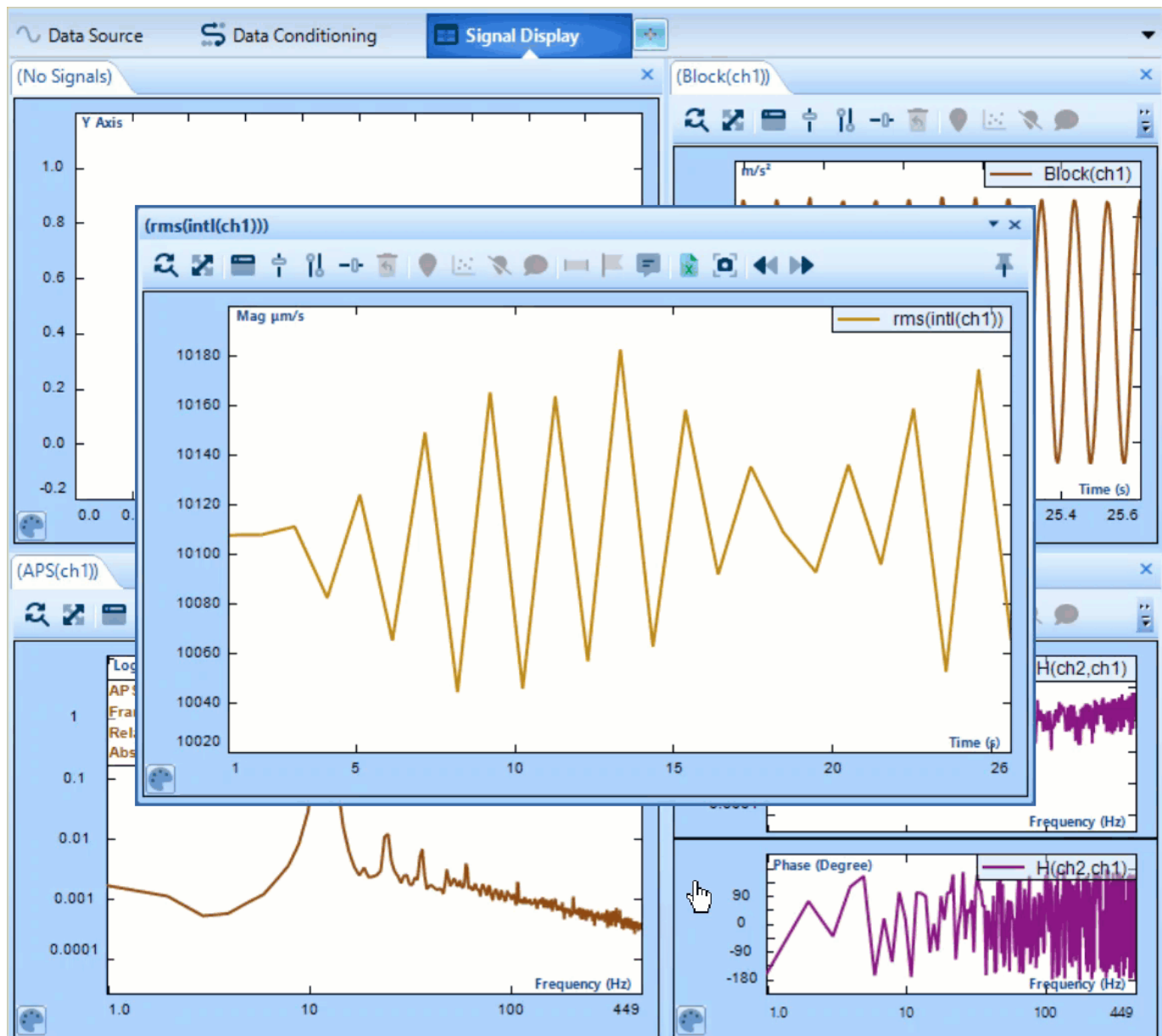


User can import a python script with a single or two inputs.

## Simple Data Conditioning Demonstration

Modules can be easily dragged into place and connected to the time stream channel output by click and drag. Module parameters are opened and modified by right clicking on the parameter and selecting Edit Analysis Parameters





From:  
<https://help.go-ci.com/> - **Crystal Instruments Help**

Permanent link:  
<https://help.go-ci.com/pa-data-conditioning>

Last update: **2026/01/30 21:21**