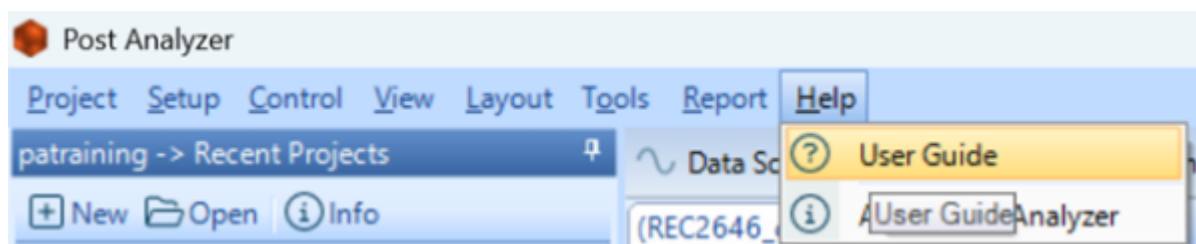
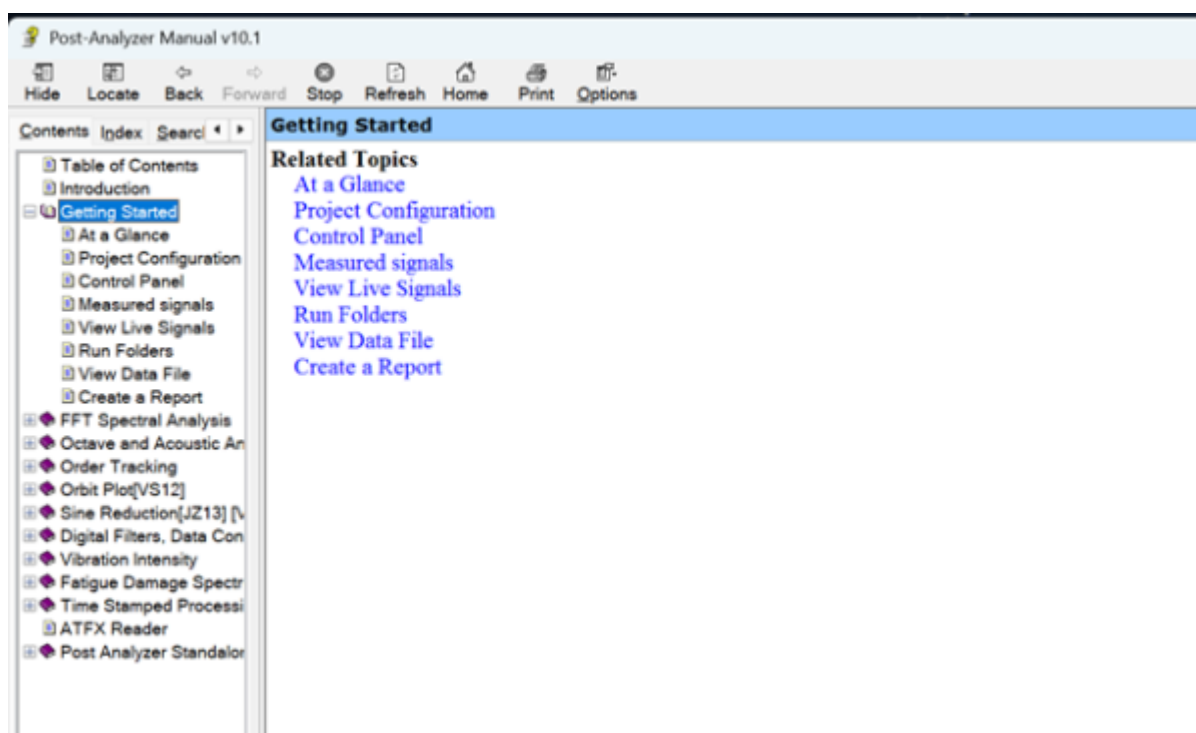


Running Post Analyzer

User guide can be found through the Help tool on the ribbon:



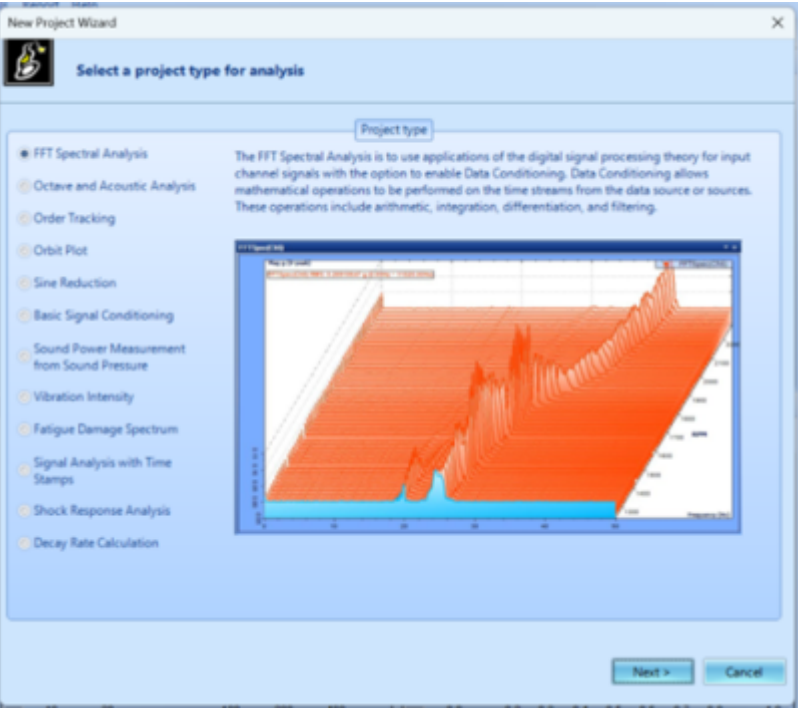
User guide is a fantastic and easily navigable resource to help guide you through the process of using and understanding Post Analyzer:



New Project

Analysis Type

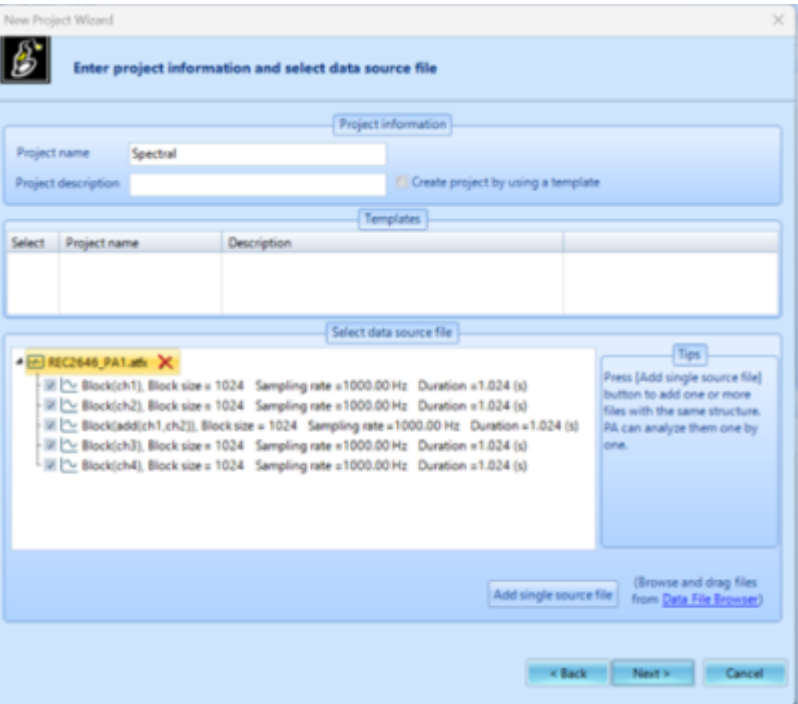
Projects store analysis settings and are associated with specified data files. There is no limit to project creation but only one can be active at any time per instance of PA. **Project wizard and test selection screens may differ from those shown below based on bundle and testing options purchased on license.**



Project creation begins with the selection of an analysis type. There is a strong possibility that you know and understand your testing parameters and requirements, in that case select the option that best fits your needs. Test description is provided when the corresponding bubble is left clicked. If you are unable to find the test type which meets your requirements, contact support@go-ci.com for support or technical info. Click Next > after desired test type is found.

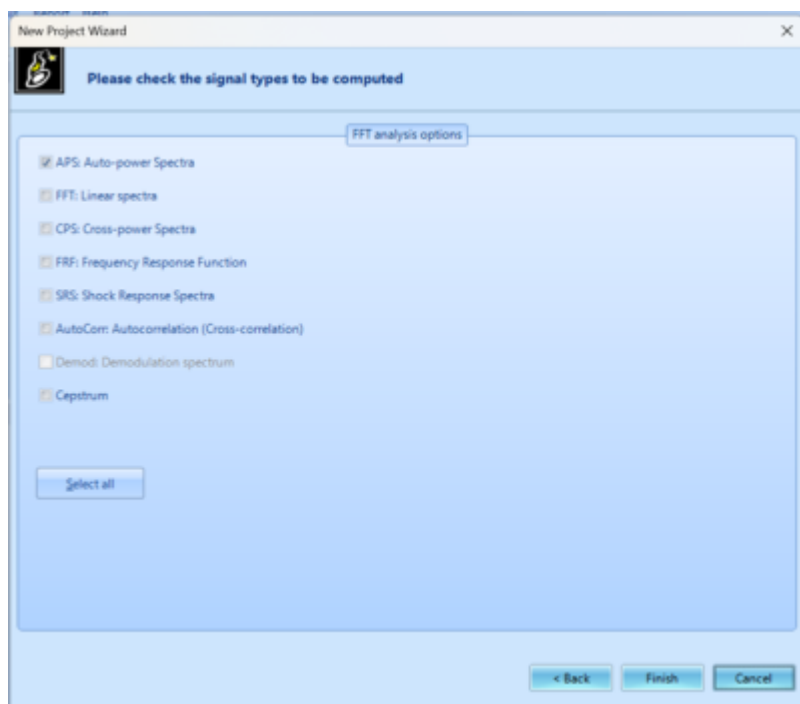
Data Source

Set project name and description and then select a template if you would like to create your project from a previous save state. Then select your data files from the source file browser. To upload .atfx .csv .txt or .tdms files from your PC, click on Add single source file. To browse files in your EDM select Data File Browser. Click Next > to continue to analysis options.



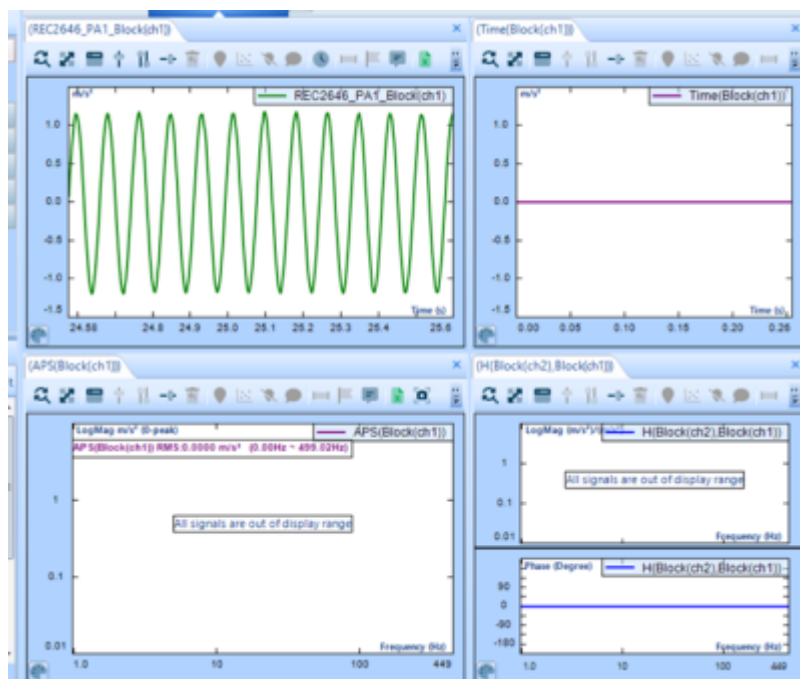
Signal Computation Selection

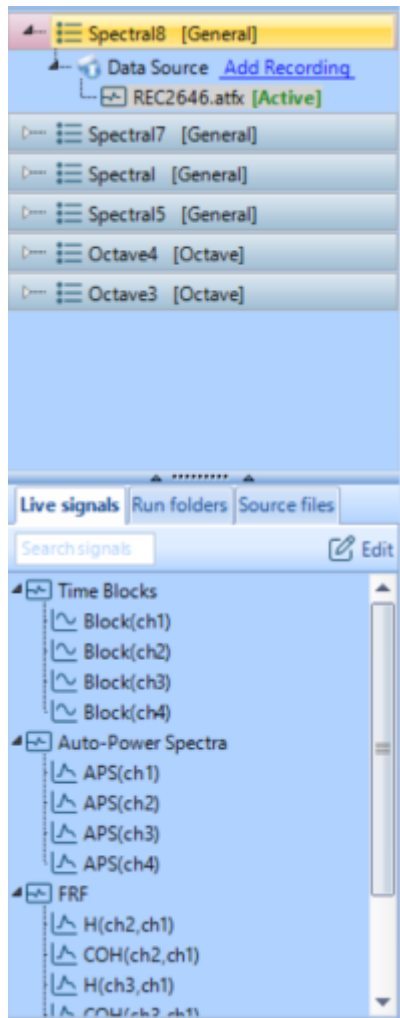
Figure displays options for an FFT analysis, options will vary depending on test type. APS and FRF are the most used analysis types.



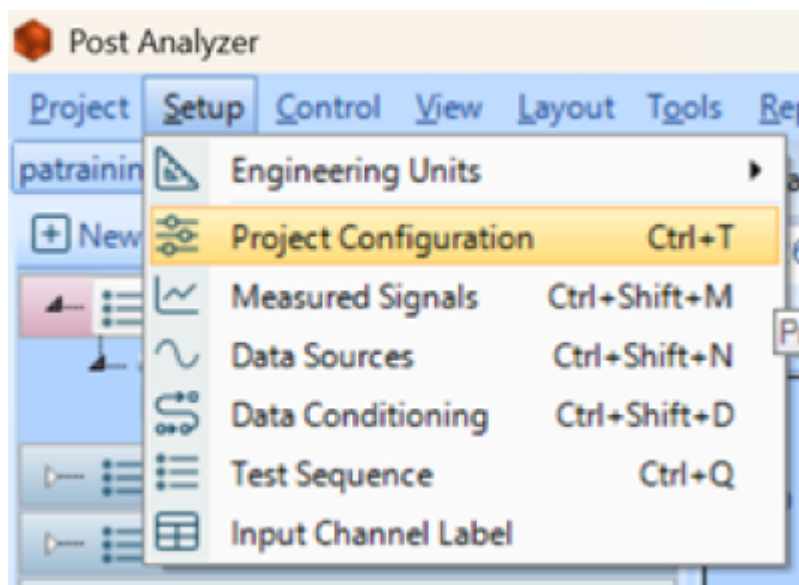
UI & Tools

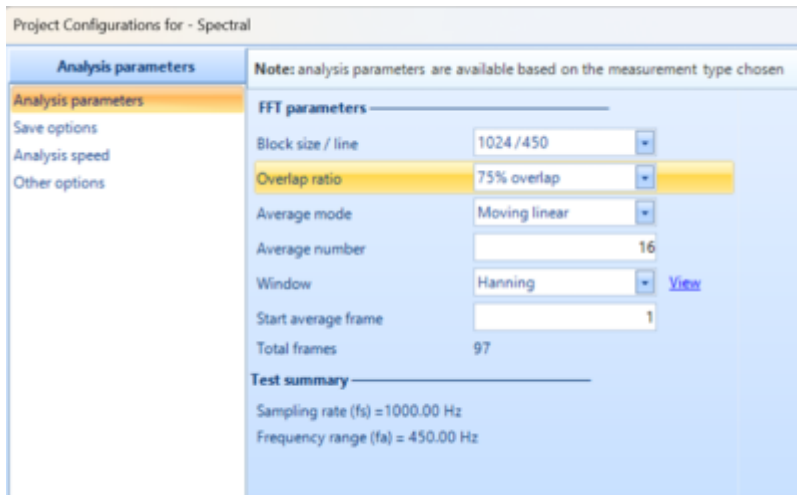
When first loaded into project only the time stream data/data source files selected for analysis, will be present.



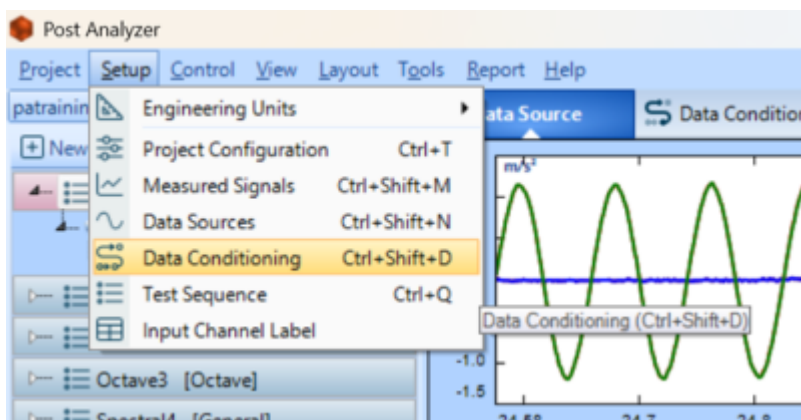


Before running test, select Setup drop down from ribbon and left click Project Configuration.



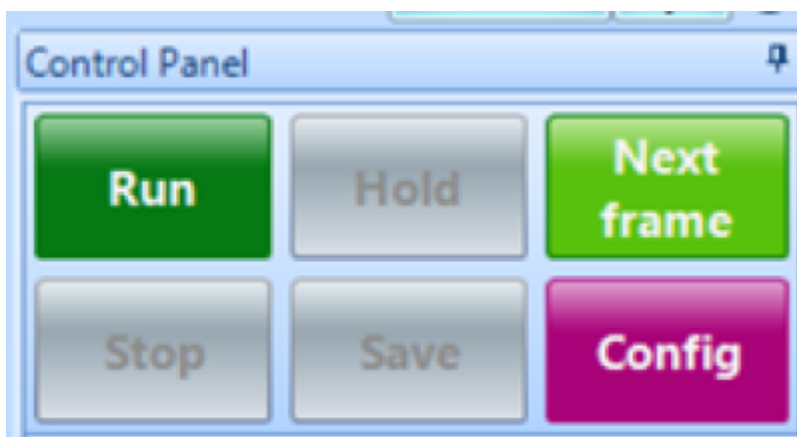


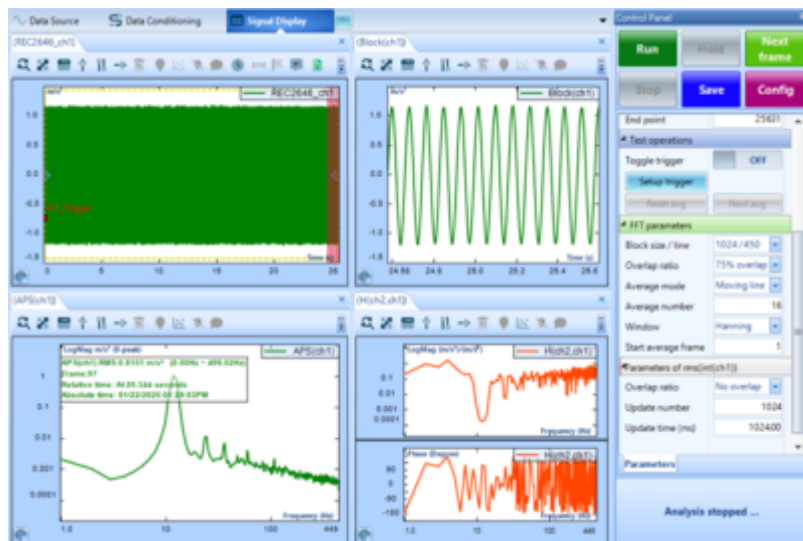
Make selections for block size / spectral lines to determine Δf and dynamic range. Overlap ratio, recommended at least 50% for Hanning window. Average mode and average number based on testing requirements. Window selection can be left as Hanning for most testing applications; Uniform may be desired for shock or transient impulse testing.



Data Conditioning

For further processing options select Setup drop down and left click Data Conditioning. Data conditioning capabilities are supported for FFT Spectral Analysis, Time-stamp, Order-Tracking, Sine Reduction & Basic Signal-Conditioning analysis types. Data Conditioning supports functions to control and process data using a logic gate structure.





Once setup is complete select Run from the control panel in the upper right of the screen. Processed data will display in windows and be saved to signal folders as the signal is run in real time. Save option in Control Panel will become available to user.

From:

<https://help.go-ci.com/> - **Crystal Instruments Help**

Permanent link:

<https://help.go-ci.com/pa-general?rev=1769723447>

Last update: **2026/01/29 21:50**