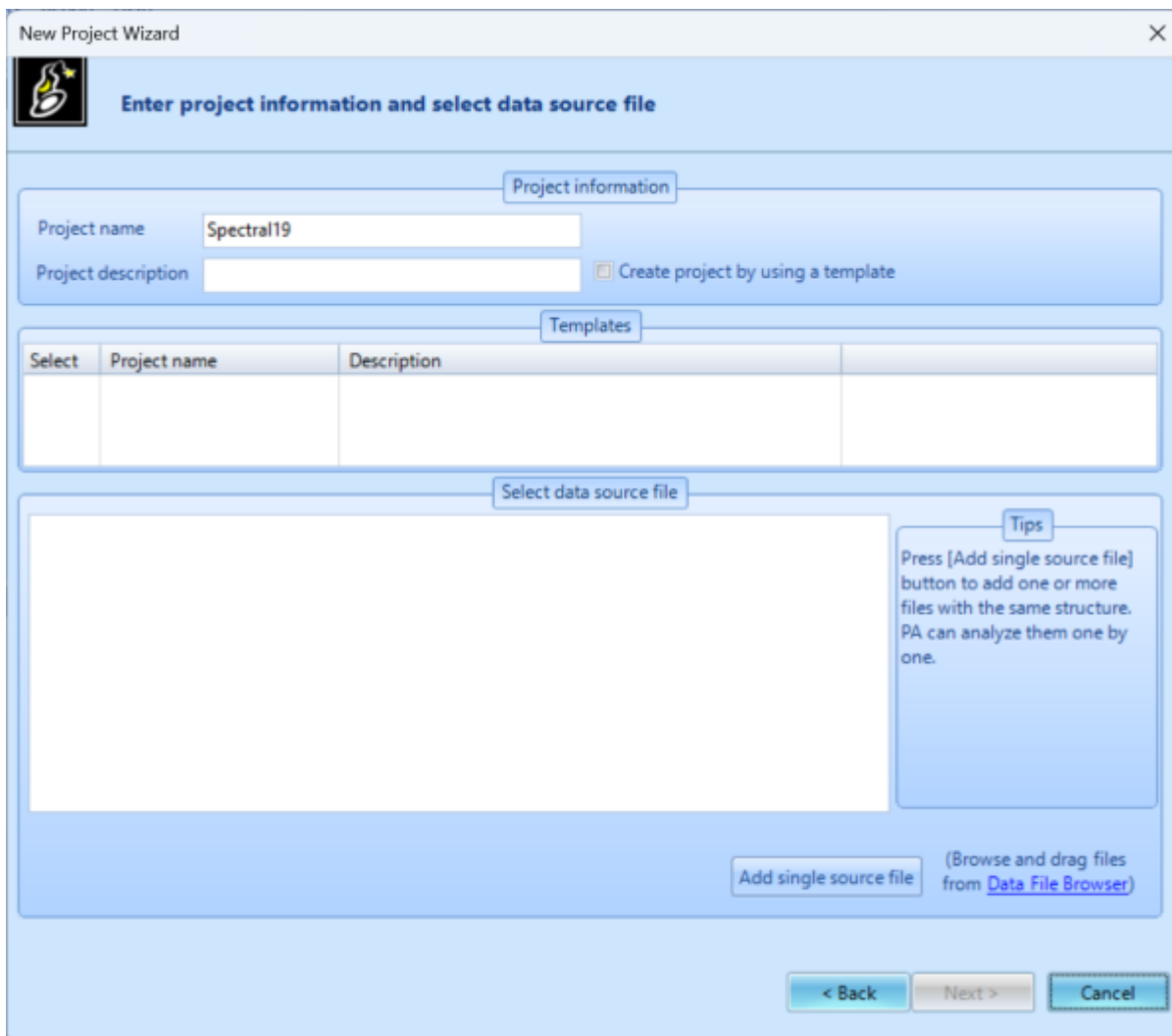


Post Analyzer Data

Importing Data

Data is imported into Post Analyzer at the start of a new project by either selecting data from the Add single source file



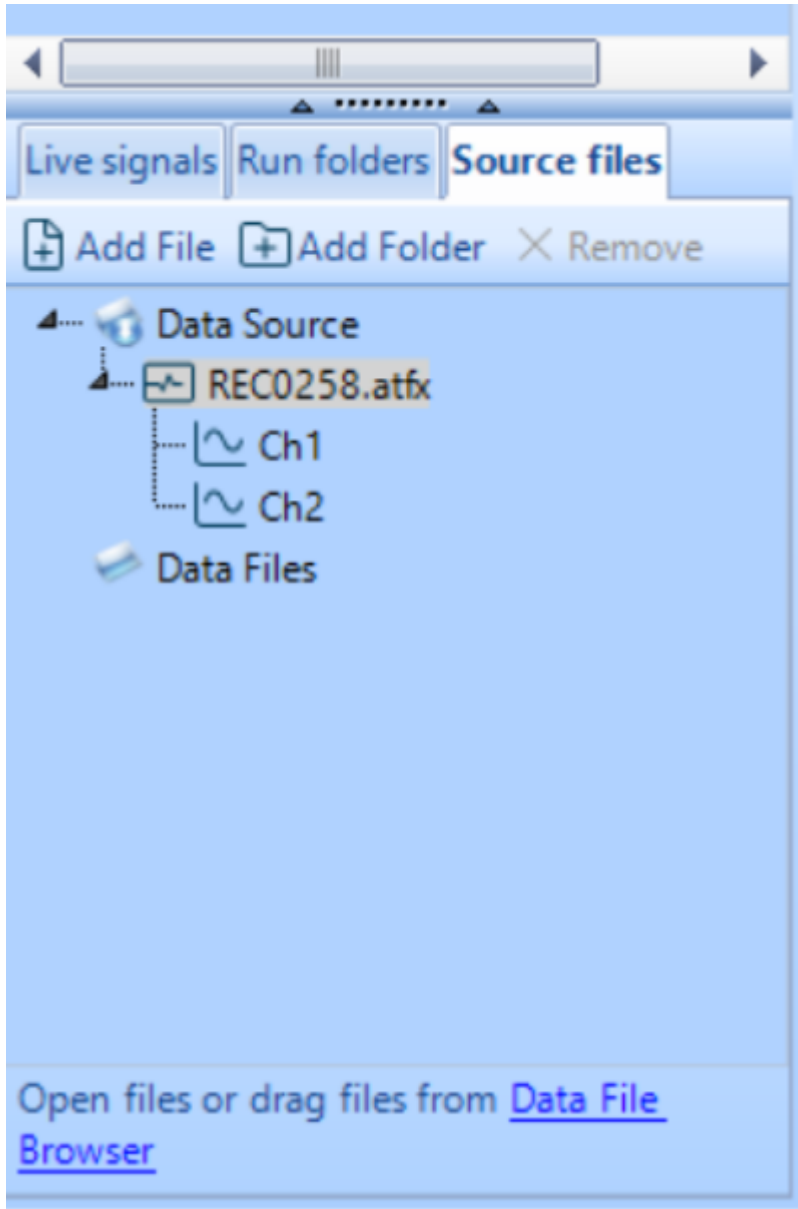
Or from the option Data File Browser which connects you to all EDM files within your PC

The screenshot shows the 'Data File Browser' application interface. On the left, there is a sidebar with a search bar and a tree view of folders including 'All EDM files', 'Favorites', 'Saved queries', and 'Downloads'. The main area displays a table of 14 EDM files with columns for File, Measurement Type, Created Date, and Location. Below the table, the 'General information' tab is active, showing recording properties such as User (Crystal Instruments), Instrument (Test Environment-CoCo), and Recording path.

File	Measurement Type	Created Date	Location
1 TWRDefault	None	11/6/2010 6:05:12 PM	...Downloads\LimitCollection\LimitCollection\EDM_FAT_Files
2 TWRDefault_temp_disp	None	11/6/2010 6:05:12 PM	...Downloads\LimitCollection\LimitCollection\EDM_FAT_Files
3 TWRDefault_temp_vel	None	11/6/2010 6:05:12 PM	...Downloads\LimitCollection\LimitCollection\EDM_FAT_Files
4 TWRDefault	None	11/6/2010 9:05:12 PM	...ReidGarcelon\Documents\EDM_VCS\TWR
5 TWRDefault_temp_acc	None	11/6/2010 9:05:12 PM	...ReidGarcelon\Documents\EDM_VCS\TWR
6 TWRDefault_temp_disp	None	11/6/2010 9:05:12 PM	...ReidGarcelon\Documents\EDM_VCS\TWR
7 TWRDefault_temp_vel	None	11/6/2010 9:05:12 PM	...ReidGarcelon\Documents\EDM_VCS\TWR
8 Car Console with 200 Hz LP filter_Profile_TWRPro	None	9/6/2012 10:03:49 AM	...Downloads\LimitCollection\LimitCollection\EDM_FAT_Files
9 Car Console with 200 Hz LP filter_Profile_TWRPro_temp_disp	None	9/6/2012 10:03:49 AM	...Downloads\LimitCollection\LimitCollection\EDM_FAT_Files
10 Car Console with 200 Hz LP filter_Profile_TWRPro_temp_vel	None	9/6/2012 10:03:49 AM	...Downloads\LimitCollection\LimitCollection\EDM_FAT_Files
11 SIG0000	VCS(Random)	2/8/2017 6:07:35 PM	...EDM_VCS\fat\Random-Ch1Ctrl\執行1 Feb 08, 2017 18-07-32
12 REC0026	None	12/5/2017 6:03:32 PM	...EDM_VCS\fat\Random-ch1Ctrl\執行1 Run3 Dec 05, 20...
13 SIG0002	VCS(Random)	12/5/2017 6:05:39 PM	...EDM_VCS\fat\Random-ch1Ctrl\執行1 Run3 Dec 05, 20...
14 SIG0000	MDA(Hammer Impact)	4/2/2018 4:06:00 PM	...EDM_EMA\modalhammerimpacttest\IBeam_HI_March18\R...

Recording property	Values
User	Crystal Instruments
Instrument	Test Environment-CoCo
Test note	Default Test Notes
Recording name	TWRDefault
Recording path	C:\Users\ReidGarcelon\Downloads\LimitCollection\LimitCollection\EDM_FAT_Files\TWRDefault.atfx
Recording type	ASAM ODS Format - XML
Saved by EDM version	12.1.8.47
Master Device SN	0

Files loaded into project will appear in the Source files tab while all data processed within project will appear in the live signals tab and saved data will appear in the run folders tab



Exporting Data

Batch Export

Export location: ... Export data from each sub folder to a different folder

Export format:

Range Selection

Entire range

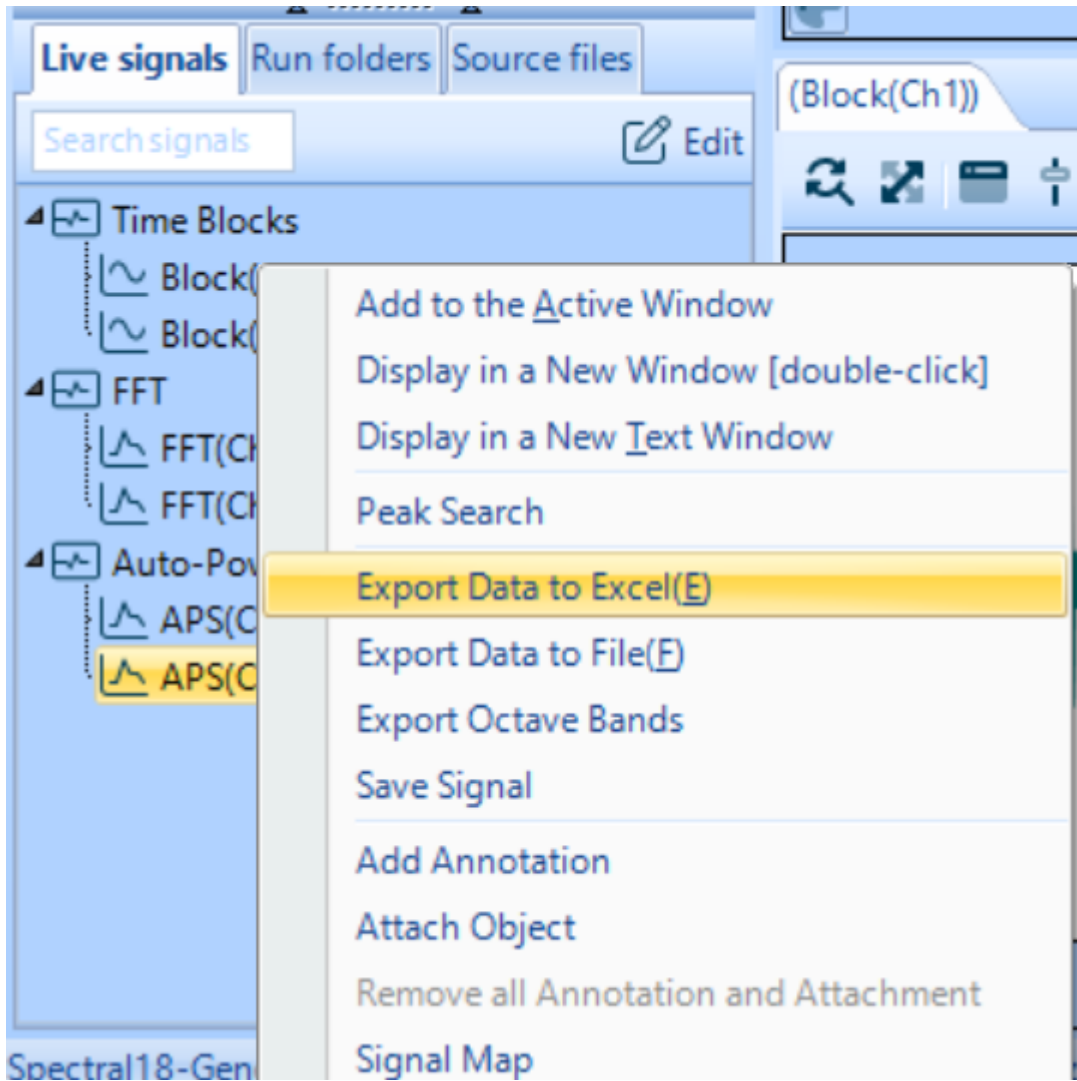
Export signal in time range from to

Signal Types

- Time Signals
 - Time Blocks
 - Time Streams
 - Time History
- Frequency Signals
 - Autopower Spectrum
 - Complex Spectrum
 - Crosspower Spectrum
 - Frequency Response Spectrum
 - Coherence
 - Octave Spectrum
 - Order Autopower Spectrum
 - Complex Order Spectrum

NOTE: The spectrum type for export and vertical axis format can be set in the [Global settings ->Spectrum format](#)

The screenshot shows a software interface with a top navigation bar containing three tabs: "Live signals", "Run folders", and "Source files". Below the tabs is a search bar labeled "Search signals" and an "Export" button with a document icon. The main area displays a file tree structure. The root folder is "Saved Files" with a timestamp "4/14/2026 4:08:32 PM". It contains two sub-items, each with a document icon and a timestamp: "REC0258_PA2 10:16:43" and "REC0258_PA1 10:16:43".



From: <https://help.go-ci.com/> - **Crystal Instruments Help**

Permanent link: <https://help.go-ci.com/pa:data?rev=1776197489>

Last update: **2026/04/14 20:11**