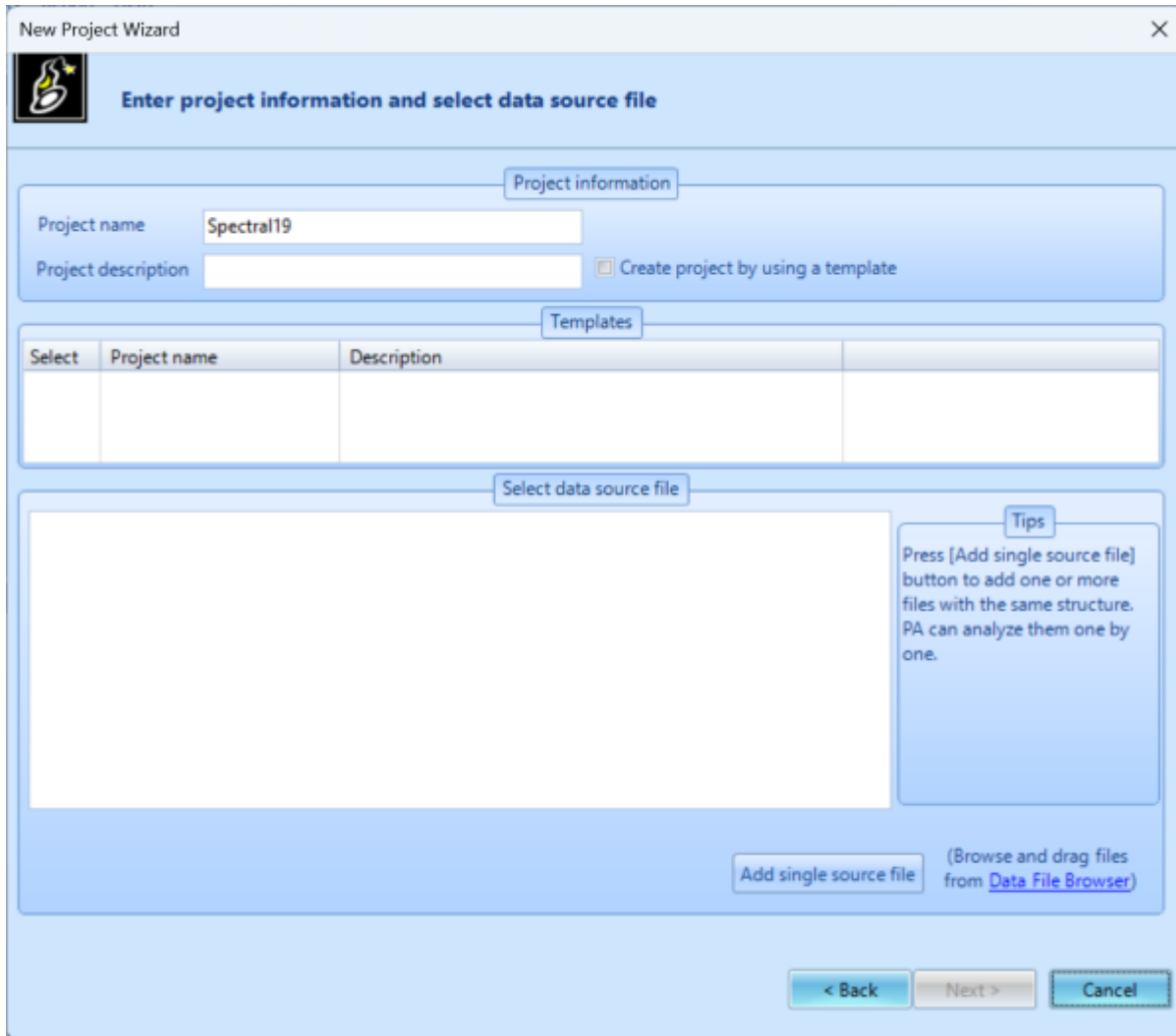


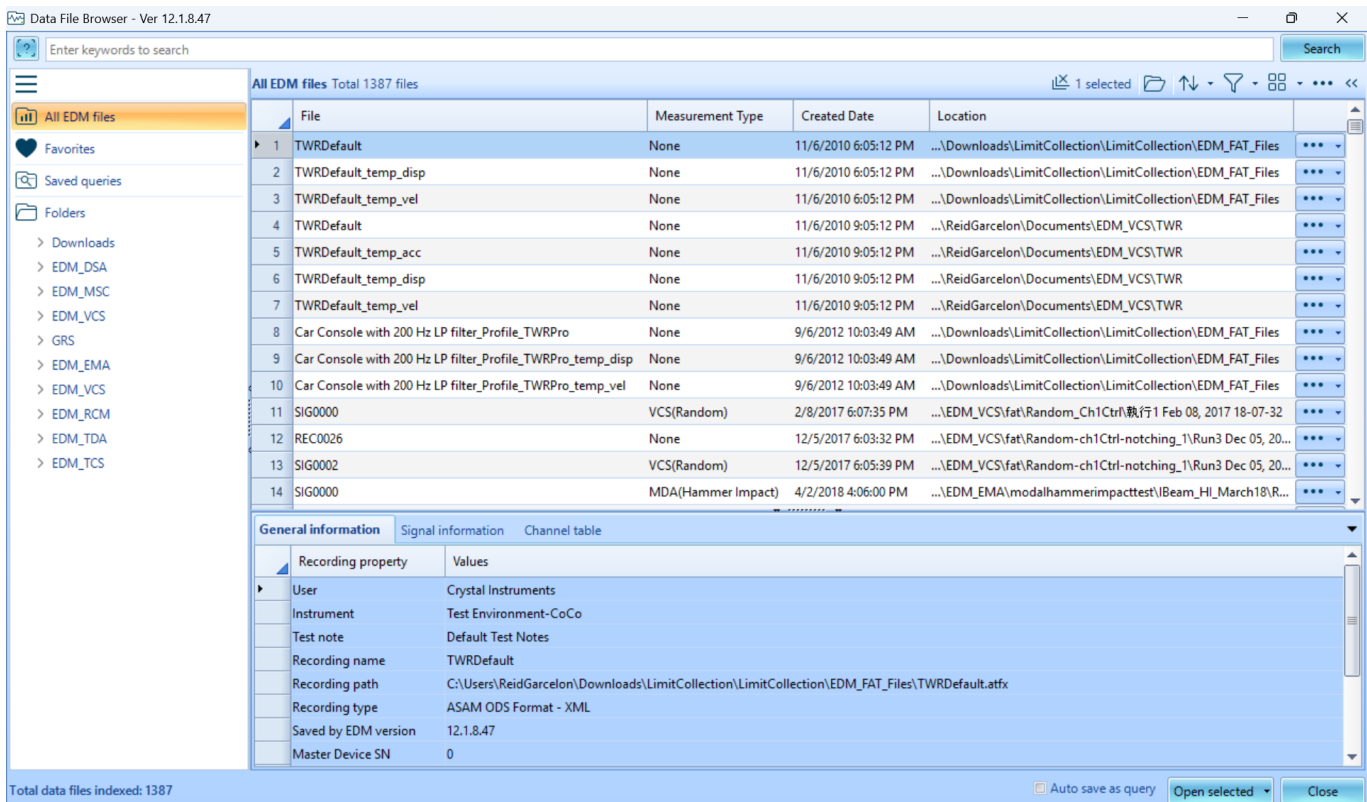
Post Analyzer Data

Importing Data

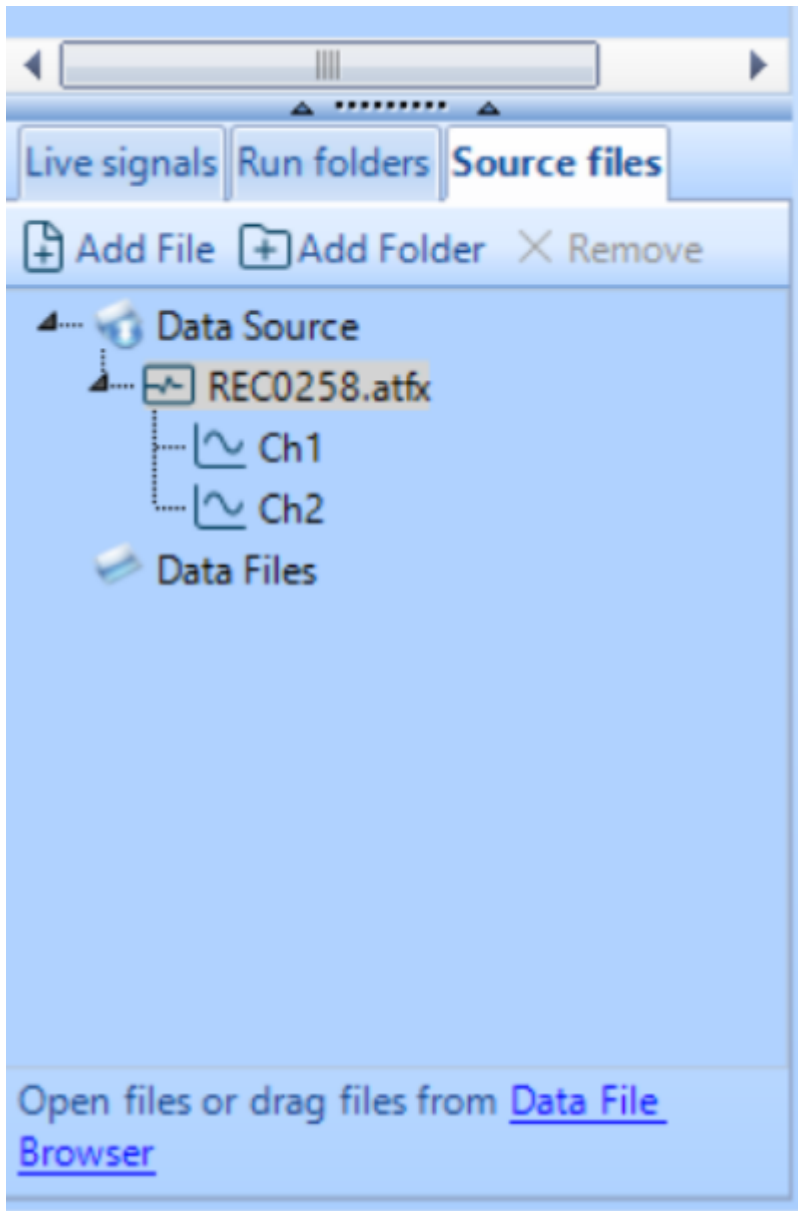
Data is imported into Post Analyzer at the start of a new project by either selecting data from the Add single source file



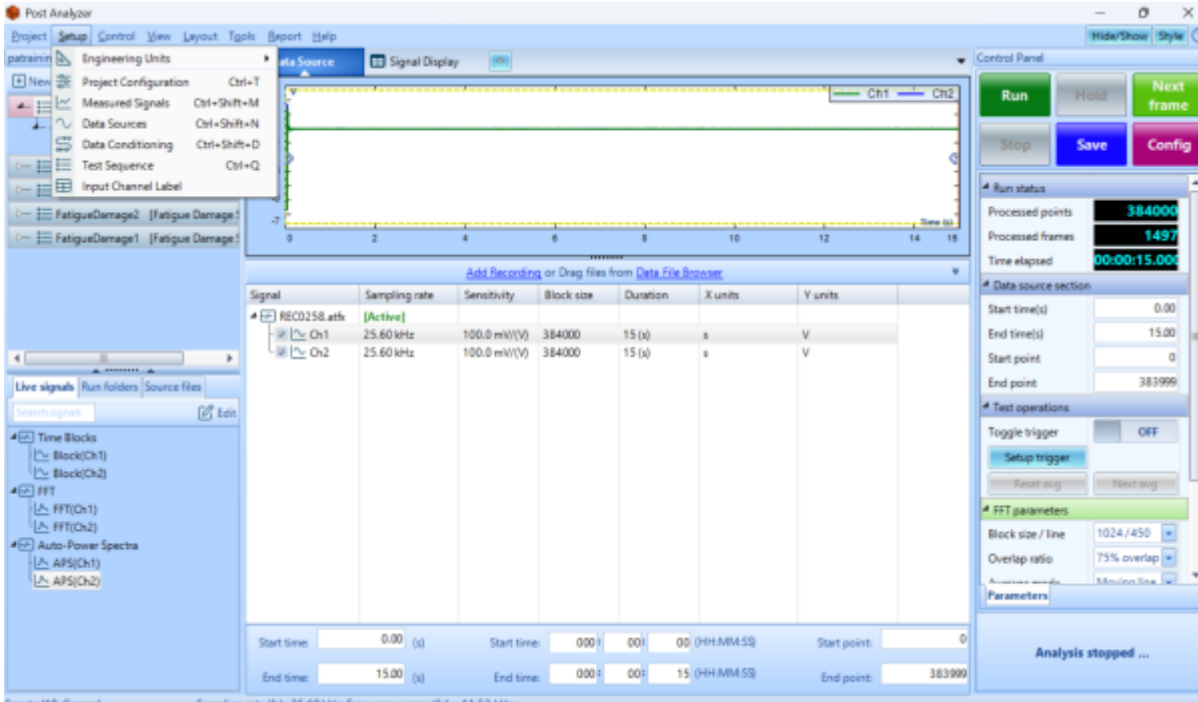
Or from the option Data File Browser which connects you to all EDM files within your PC



Files loaded into project will appear in the Source files tab while all data processed within project will appear in the live signals tab and saved data will appear in the run folders tab

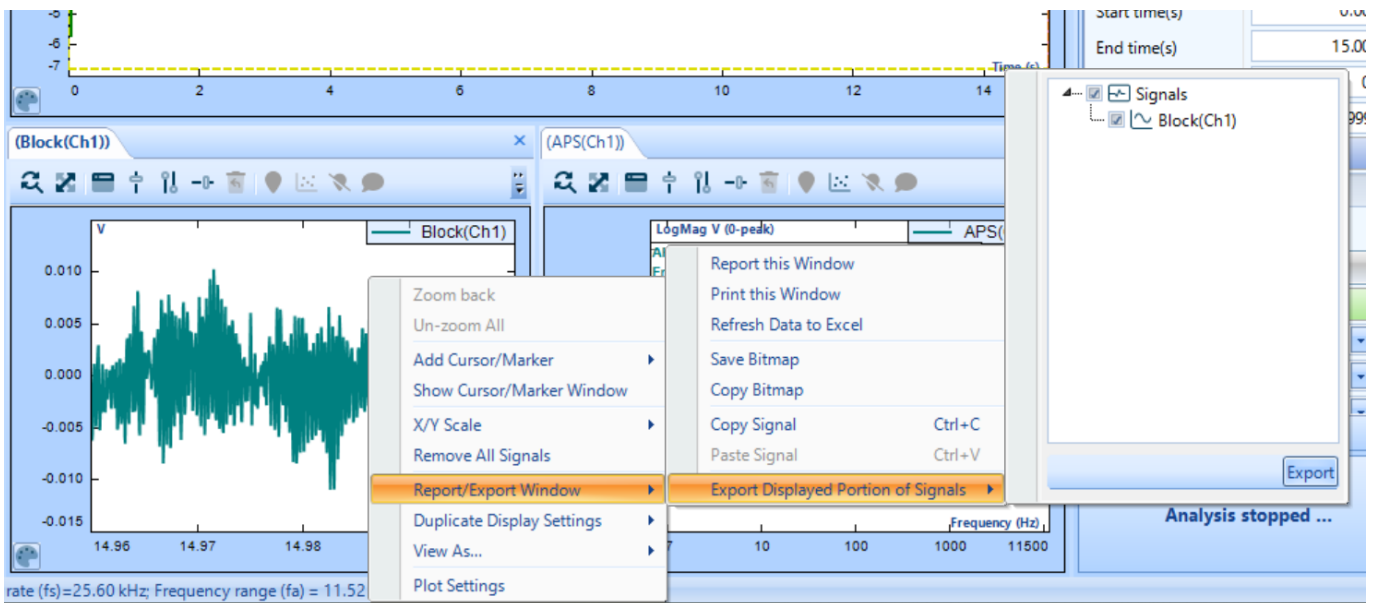


Data Source files can also be found through the Setup → Data Sources which will open a Data Source window in the main display



Exporting Data

Data can be exported in number of ways. The simplest of ways is to right click on the desired plot in the window and select Report/Export Window → Export Displayed Portion of Signals → Export



Batch Export

Export location: ... Export data from each sub folder to a different folder

Export format:

Range Selection

Entire range

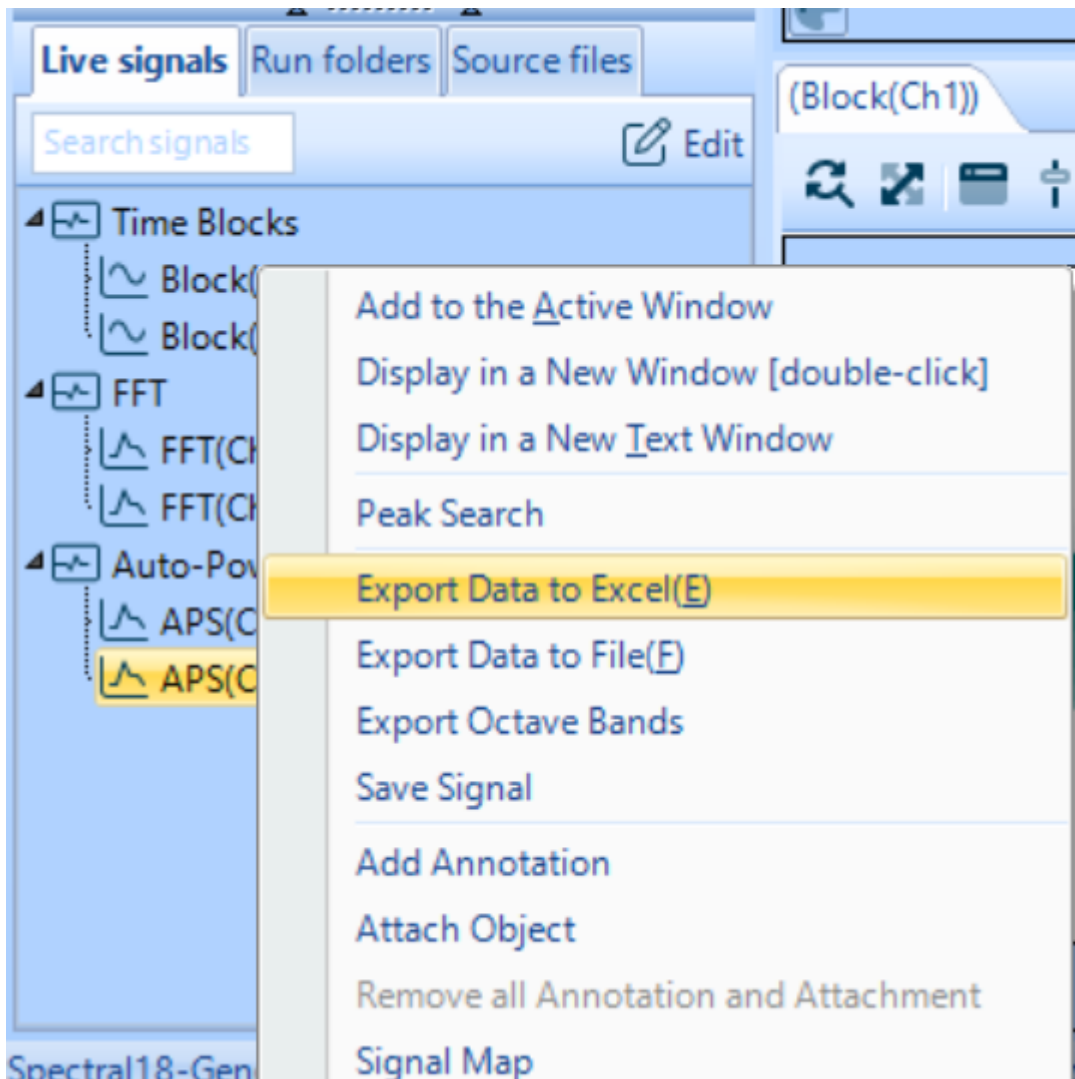
Export signal in time range from to

Signal Types

- Time Signals
 - Time Blocks
 - Time Streams
 - Time History
- Frequency Signals
 - Autopower Spectrum
 - Complex Spectrum
 - Crosspower Spectrum
 - Frequency Response Spectrum
 - Coherence
 - Octave Spectrum
 - Order Autopower Spectrum
 - Complex Order Spectrum

NOTE: The spectrum type for export and vertical axis format can be set in the [Global settings ->Spectrum format](#)

The screenshot shows a software interface with a light blue background. At the top, there are three tabs: "Live signals", "Run folders", and "Source files". Below the tabs is a search bar labeled "Search signals" and an "Export" button with a document icon. The main area displays a file explorer view. A folder named "Saved Files" is expanded, showing a timestamp "4/14/2026 4:08:32 PM". Inside this folder, there are two audio files: "REC0258_PA2 10:16:43" and "REC0258_PA1 10:16:43". Each file is represented by a document icon with a sound wave.



From: <https://help.go-ci.com/> - **Crystal Instruments Help**

Permanent link: <https://help.go-ci.com/pa:data?rev=1776197755>

Last update: **2026/04/14 20:15**