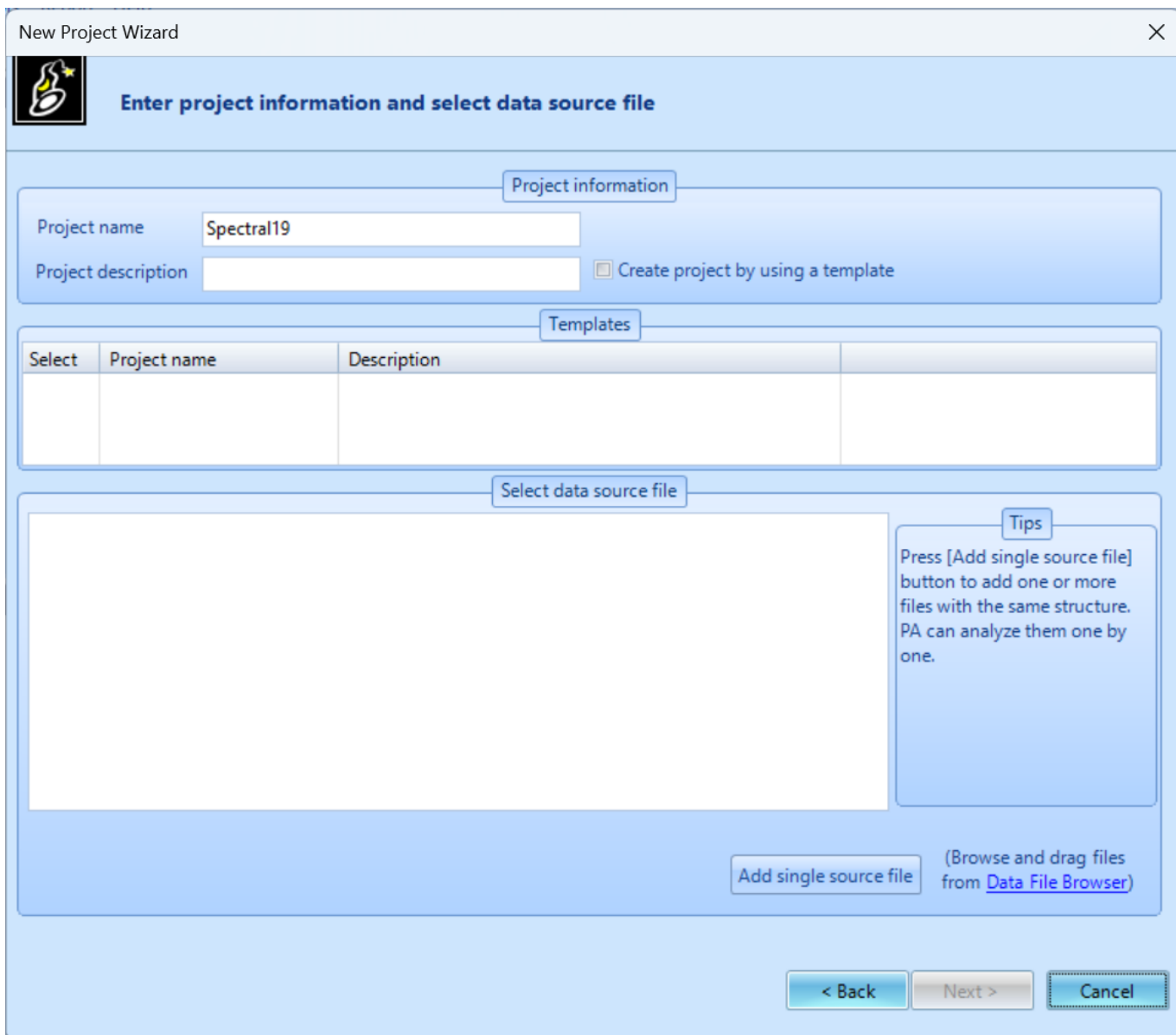


# Post Analyzer Data

## Importing Data

Data is imported into Post Analyzer at the start of a new project by either selecting data from the Add single source file



Or from the option Data File Browser which connects you to all EDM files within your PC

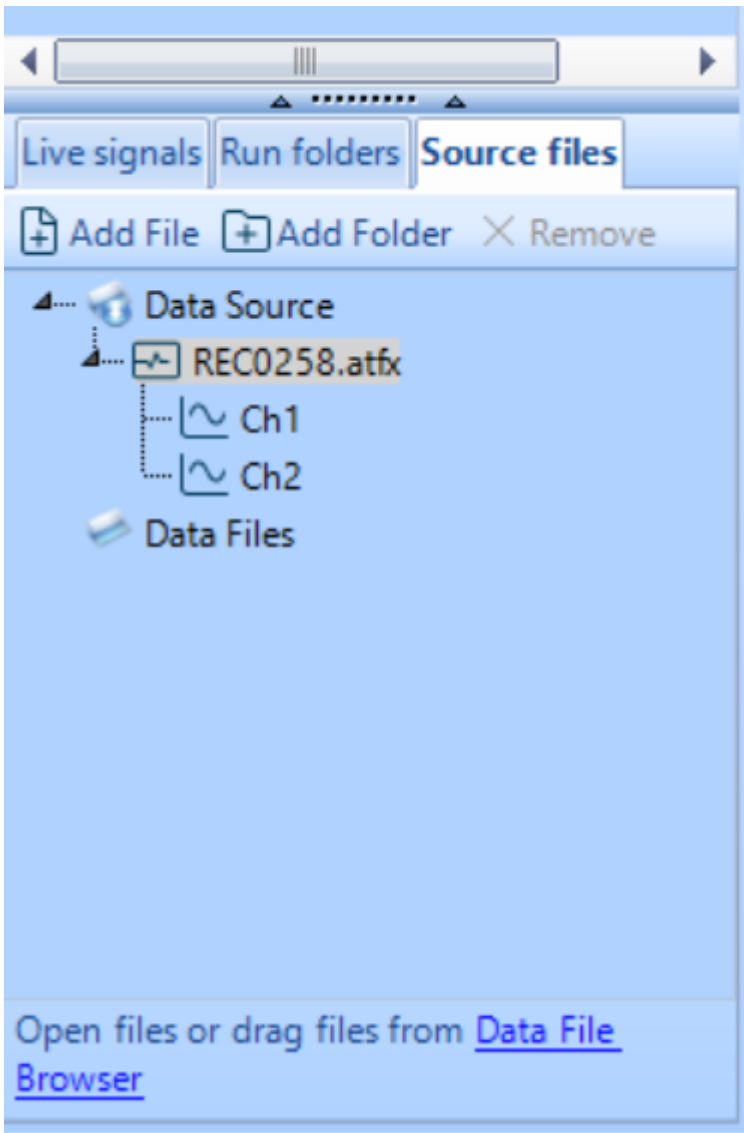
The screenshot shows the 'Data File Browser' application interface. On the left is a sidebar with a search bar and a folder tree containing 'All EDM files', 'Favorites', 'Saved queries', and 'Folders' (with sub-folders like Downloads, EDM\_DSA, etc.). The main area displays a table of 14 EDM files with columns for File, Measurement Type, Created Date, and Location. Below the table, the 'General information' tab is active, showing recording properties such as User (Crystal Instruments), Instrument (Test Environment-CoCo), and Recording path.

File	Measurement Type	Created Date	Location
1 TWRDefault	None	11/6/2010 6:05:12 PM	...Downloads\LimitCollection\LimitCollection\EDM_FAT_Files
2 TWRDefault_temp_disp	None	11/6/2010 6:05:12 PM	...Downloads\LimitCollection\LimitCollection\EDM_FAT_Files
3 TWRDefault_temp_vel	None	11/6/2010 6:05:12 PM	...Downloads\LimitCollection\LimitCollection\EDM_FAT_Files
4 TWRDefault	None	11/6/2010 9:05:12 PM	...ReidGarcelon\Documents\EDM_VCS\TWR
5 TWRDefault_temp_acc	None	11/6/2010 9:05:12 PM	...ReidGarcelon\Documents\EDM_VCS\TWR
6 TWRDefault_temp_disp	None	11/6/2010 9:05:12 PM	...ReidGarcelon\Documents\EDM_VCS\TWR
7 TWRDefault_temp_vel	None	11/6/2010 9:05:12 PM	...ReidGarcelon\Documents\EDM_VCS\TWR
8 Car Console with 200 Hz LP filter_Profile_TWRPro	None	9/6/2012 10:03:49 AM	...Downloads\LimitCollection\LimitCollection\EDM_FAT_Files
9 Car Console with 200 Hz LP filter_Profile_TWRPro_temp_disp	None	9/6/2012 10:03:49 AM	...Downloads\LimitCollection\LimitCollection\EDM_FAT_Files
10 Car Console with 200 Hz LP filter_Profile_TWRPro_temp_vel	None	9/6/2012 10:03:49 AM	...Downloads\LimitCollection\LimitCollection\EDM_FAT_Files
11 SIG0000	VCS(Random)	2/8/2017 6:07:35 PM	...EDM_VCS\fat\Random-Ch1Ctrl\執行1 Feb 08, 2017 18-07-32
12 REC0026	None	12/5/2017 6:03:32 PM	...EDM_VCS\fat\Random-ch1Ctrl\執行1 Run3 Dec 05, 20...
13 SIG0002	VCS(Random)	12/5/2017 6:05:39 PM	...EDM_VCS\fat\Random-ch1Ctrl\執行1 Run3 Dec 05, 20...
14 SIG0000	MDA(Hammer Impact)	4/2/2018 4:06:00 PM	...EDM_EMA\modalhammerimpacttest\IBeam_HI_March18\R...

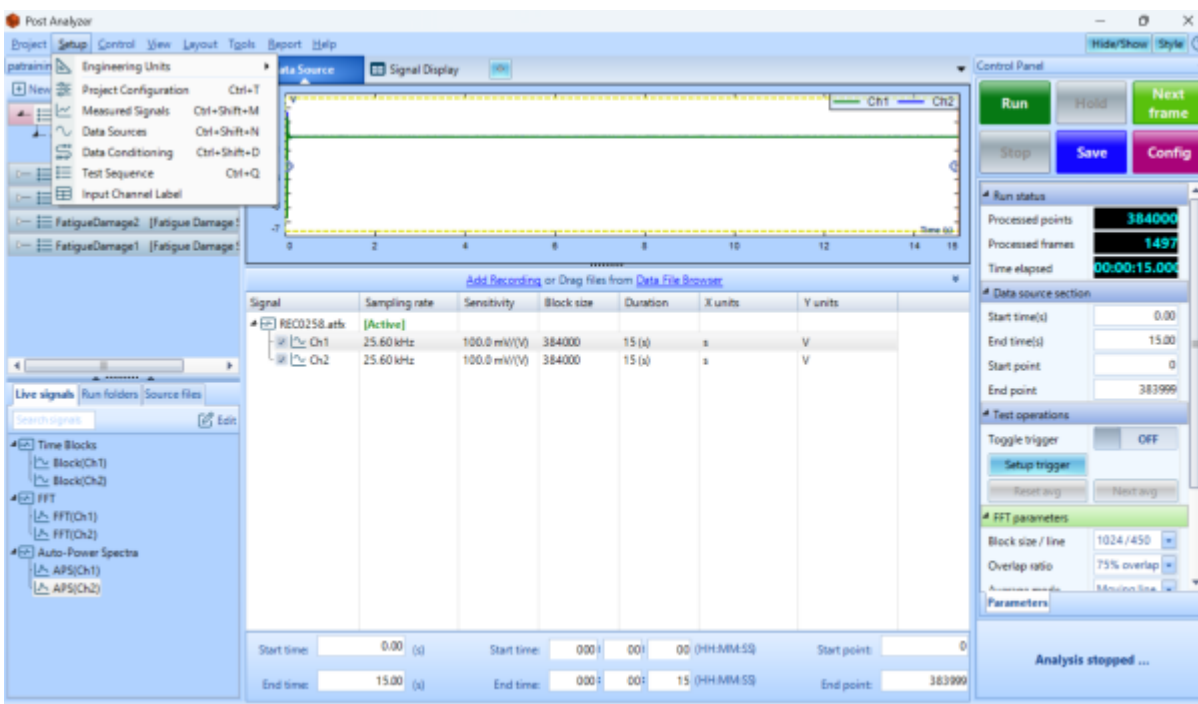
  

Recording property	Values
User	Crystal Instruments
Instrument	Test Environment-CoCo
Test note	Default Test Notes
Recording name	TWRDefault
Recording path	C:\Users\ReidGarcelon\Downloads\LimitCollection\LimitCollection\EDM_FAT_Files\TWRDefault.atfx
Recording type	ASAM ODS Format - XML
Saved by EDM version	12.1.8.47
Master Device SN	0

Files loaded into project will appear in the Source files tab while all data processed within project will appear in the live signals tab and saved data will appear in the run folders tab

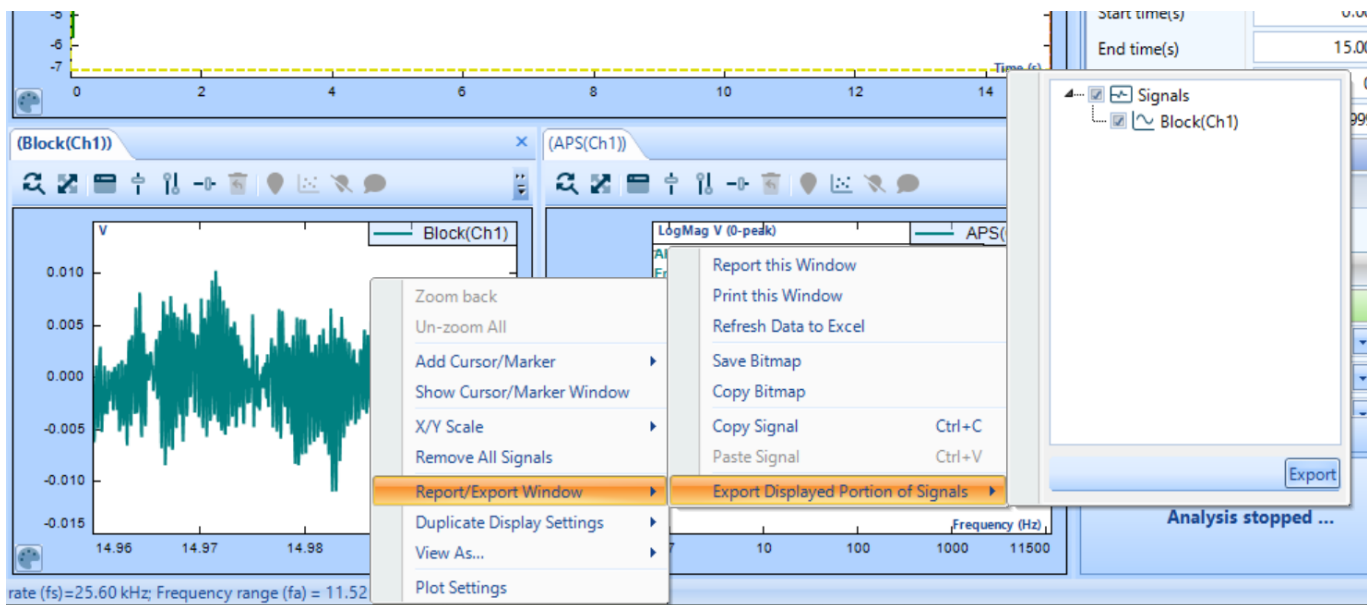


Data Source files can also be found through the Setup → Data Sources which will open a Data Source window in the main display

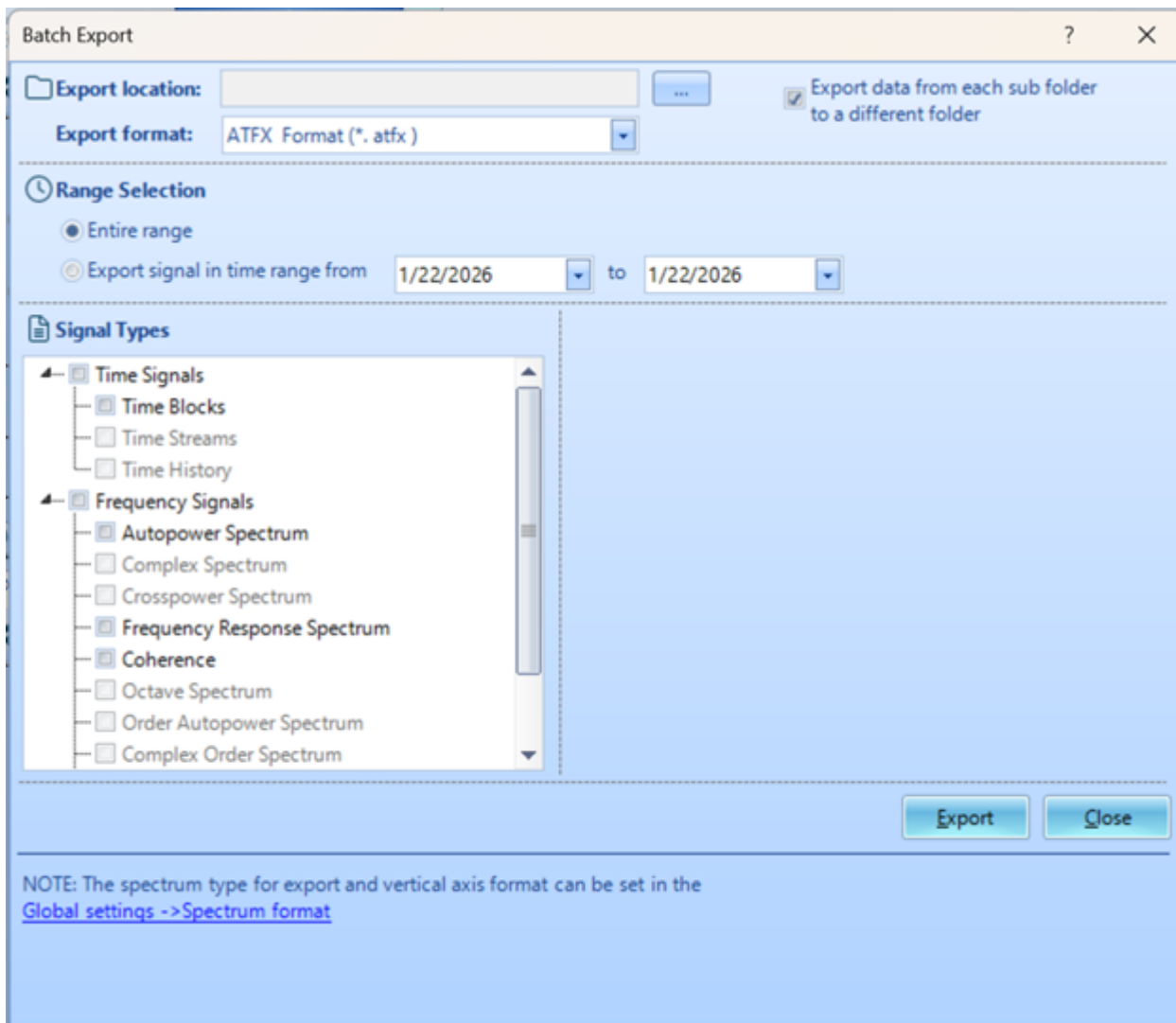


## Exporting Data

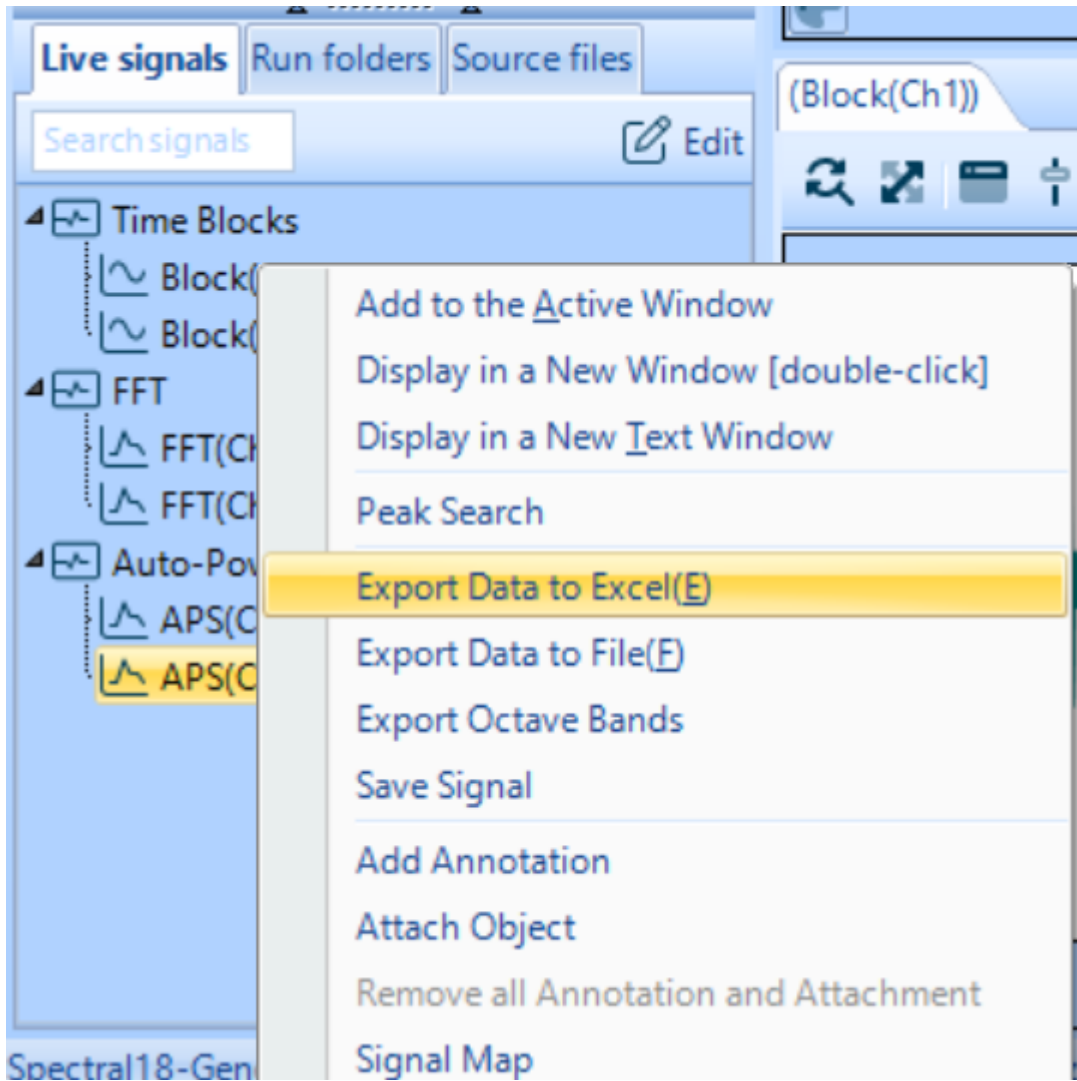
Data can be exported in number of ways. The simplest of ways is to right click on the desired plot in the window and select Report/Export Window → Export Displayed Portion of Signals → Export



Saved files will appear under the Run folders tab. Several saved files



The screenshot shows a software interface with a top navigation bar containing three tabs: "Live signals", "Run folders", and "Source files". Below the tabs is a search bar labeled "Search signals" and an "Export" button with a document icon. The main area displays a file tree structure. The root folder is "Saved Files" with a timestamp "4/14/2026 4:08:32 PM". It contains two sub-items: "REC0258\_PA2 10:16:43" and "REC0258\_PA1 10:16:43", each represented by a document icon.



From: <https://help.go-ci.com/> - **Crystal Instruments Help**

Permanent link: <https://help.go-ci.com/pa:data?rev=1776197931>

Last update: **2026/04/14 20:18**