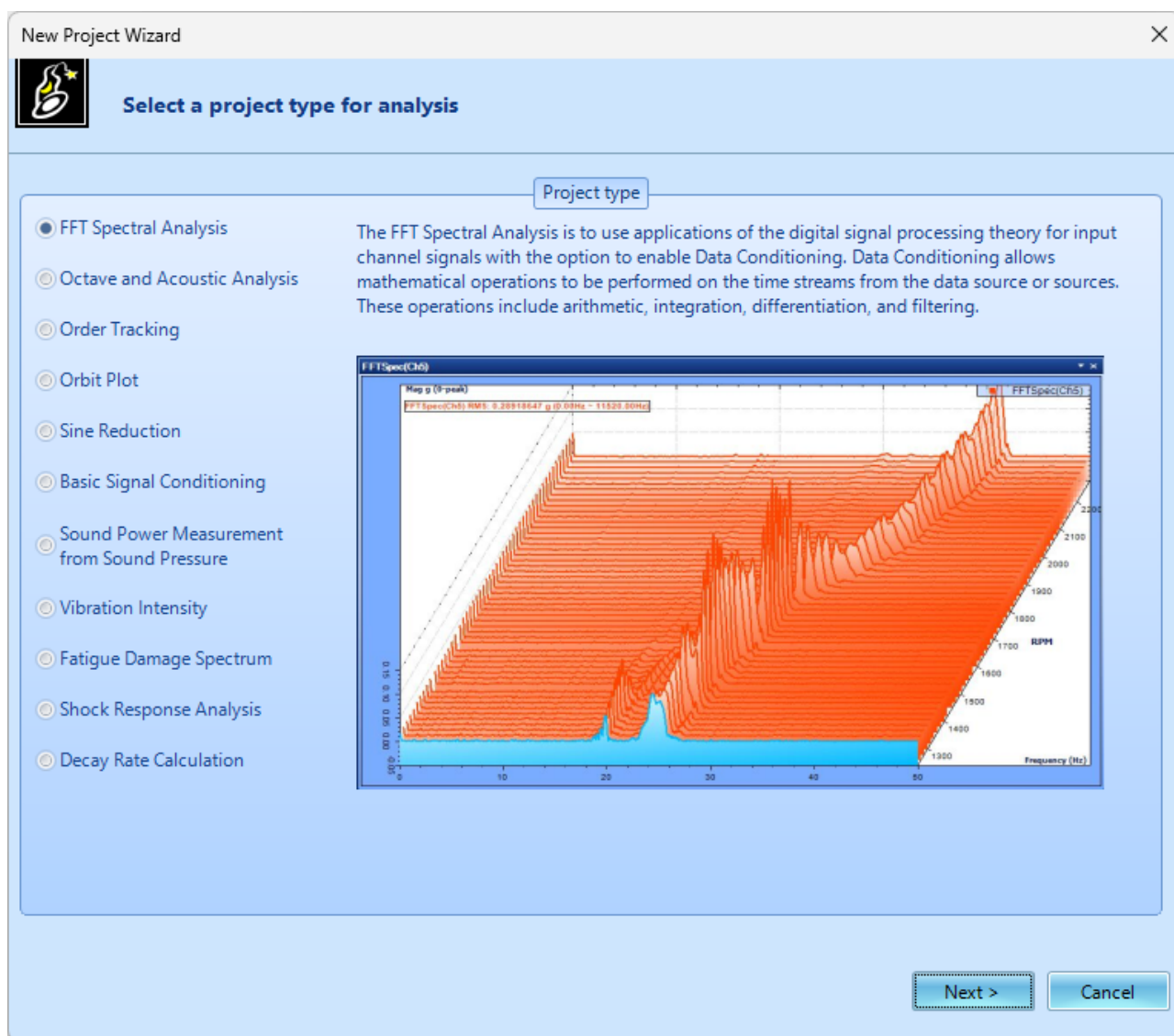



Setup a Post Analyzer test

Before starting, a file with recorded data in the form of .atfx, .csv, or .txt should be accessible to add into EDM.

In the beginning, you will see the New Project Wizard window.



New Project Wizard



Enter project information and select data source file

Project information

Project nameSpectral

Project description☐ Create project by using a template

Templates

| Select | Project name | Description |
|--------|--------------|-------------|
| | | |

Select data source file

Add single source file

(Browse and drag files from [Data File Browser](#))

Tips


Press [Add single source file] button to add one or more files with the same structure. PA can analyze them one by one.

< Back

Next >

Cancel

New Project Wizard



Enter project information and select data source file

Project information

Project nameSpectral

Project description

Create project by using a template

Templates

| Select | Project name | Description |
|--------|--------------|-------------|
| | | |

Select data source file

REC0120_PA1.atfx

Block(Ch1), Block size = 1024

Block(Ch2), Block size = 1024

Block(drive), Block size = 1024

Sampling rate =5.12 kHz

Duration =0.2 (s)

SIG0010.atfx

Block(Ch1), Block size = 1024

Block(Ch2), Block size = 1024

Block(Ch3), Block size = 1024

Block(drive), Block size = 1024

Sampling rate =5.12 kHz

Duration =0.2 (s)

Tips

Press [Add single source file] button to add one or more files with the same structure. PA can analyze them one by one.

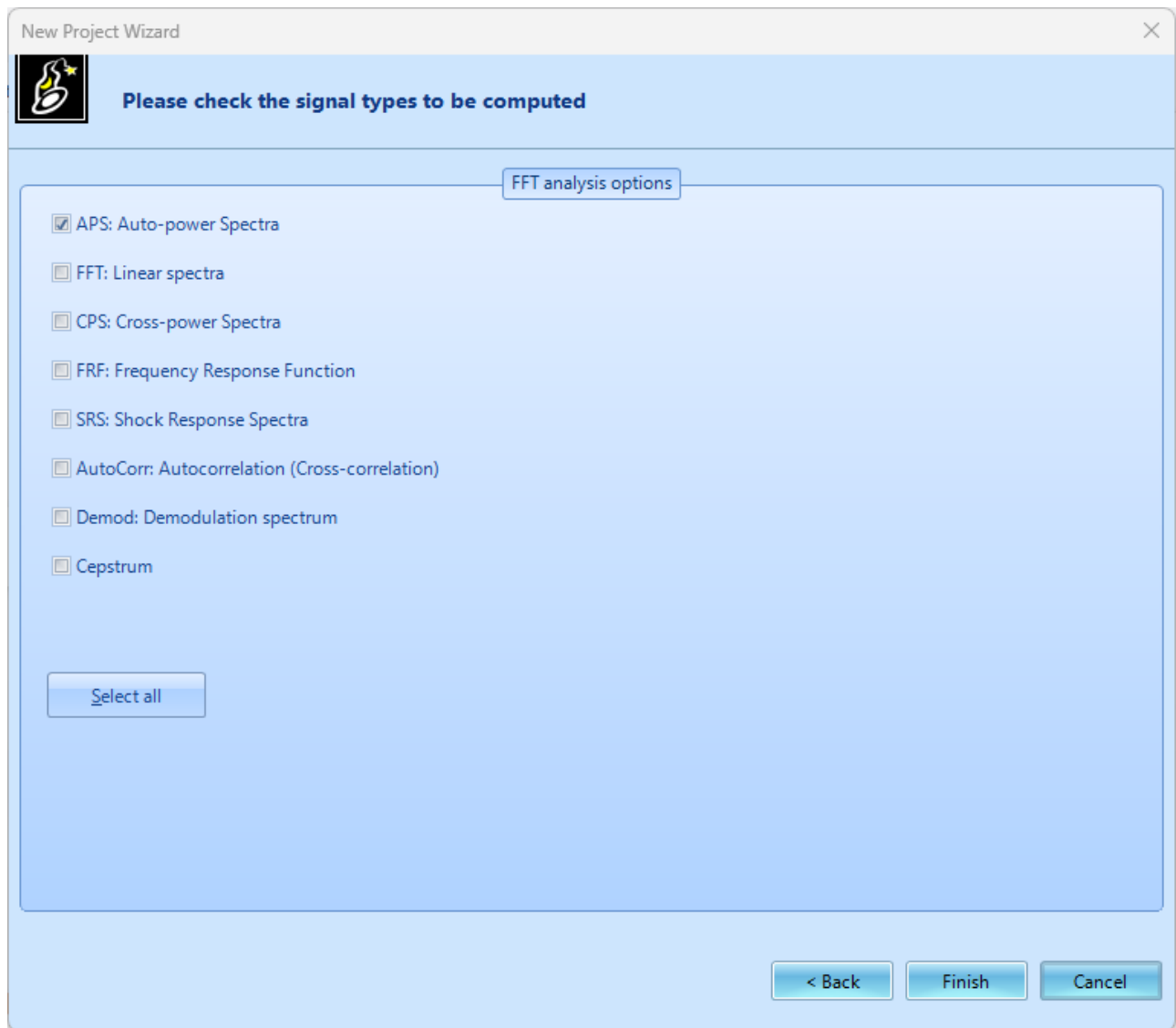
Add single source file

(Browse and drag files from [Data File Browser](#))

< Back

Next >

Cancel



1. Choose your project type, and click **Next**.
2. Insert your project name, and click **Add single source file** to add your source file
3. Click the checkboxes under the file just added to be included in the analyzation, and click Next
4. Choose the signal types to be computed

From:
<https://help.go-ci.com/> - **Crystal Instruments Help**

Permanent link:
<https://help.go-ci.com/pa:setup?rev=1750798706>

Last update: **2025/06/24 20:58**