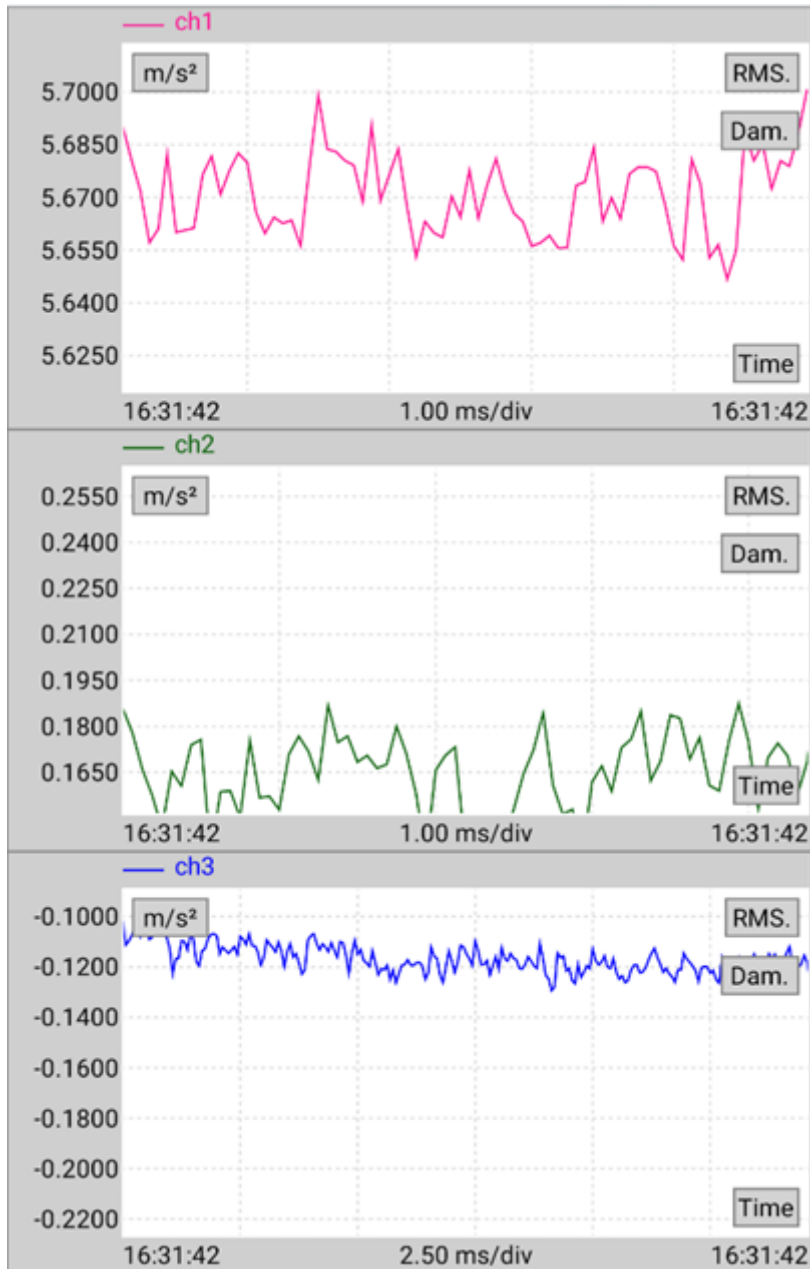


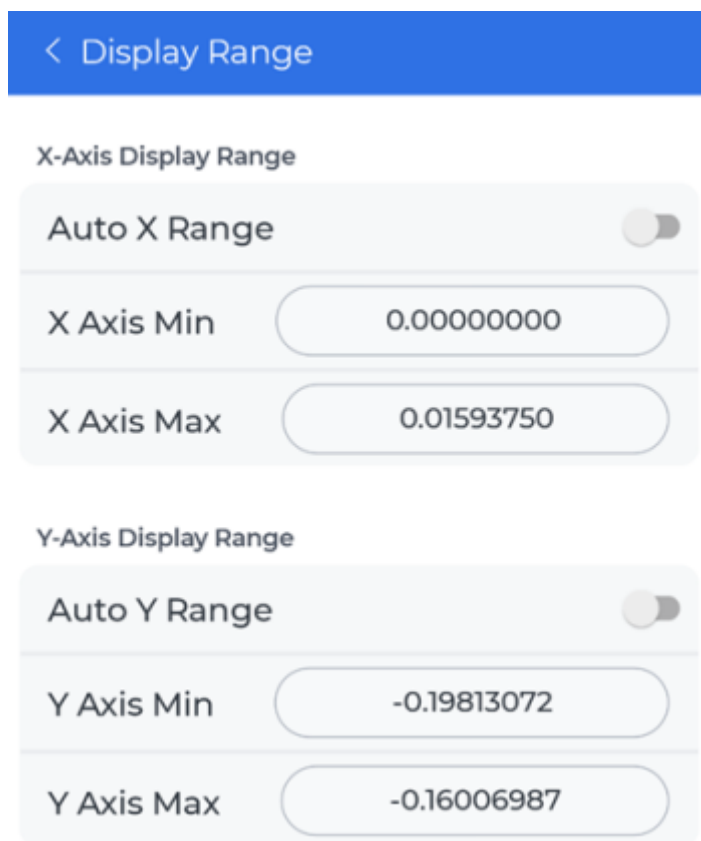
# Moving and Zooming around in the Signal Display Traces

Each signal trace on a signal display page can be moved and zoomed around.



There are two ways to control the axis ranges:

- Zooming in and out via two fingers by pinching or expanding
- Tapping on the **X or Y axis** to set Auto range or a specific range



For more details on controlling specific signal display controls, see [Navigating Signal Display Controls for Android](#) or [Navigating Signal Display Controls for iOS](#).

From: <https://help.go-ci.com/> - **Crystal Instruments Help**

Permanent link: [https://help.go-ci.com/ruby:quickguide:moving\\_and\\_zooming\\_around\\_in\\_the\\_signal\\_display\\_traces](https://help.go-ci.com/ruby:quickguide:moving_and_zooming_around_in_the_signal_display_traces)

Last update: **2025/07/14 17:00**