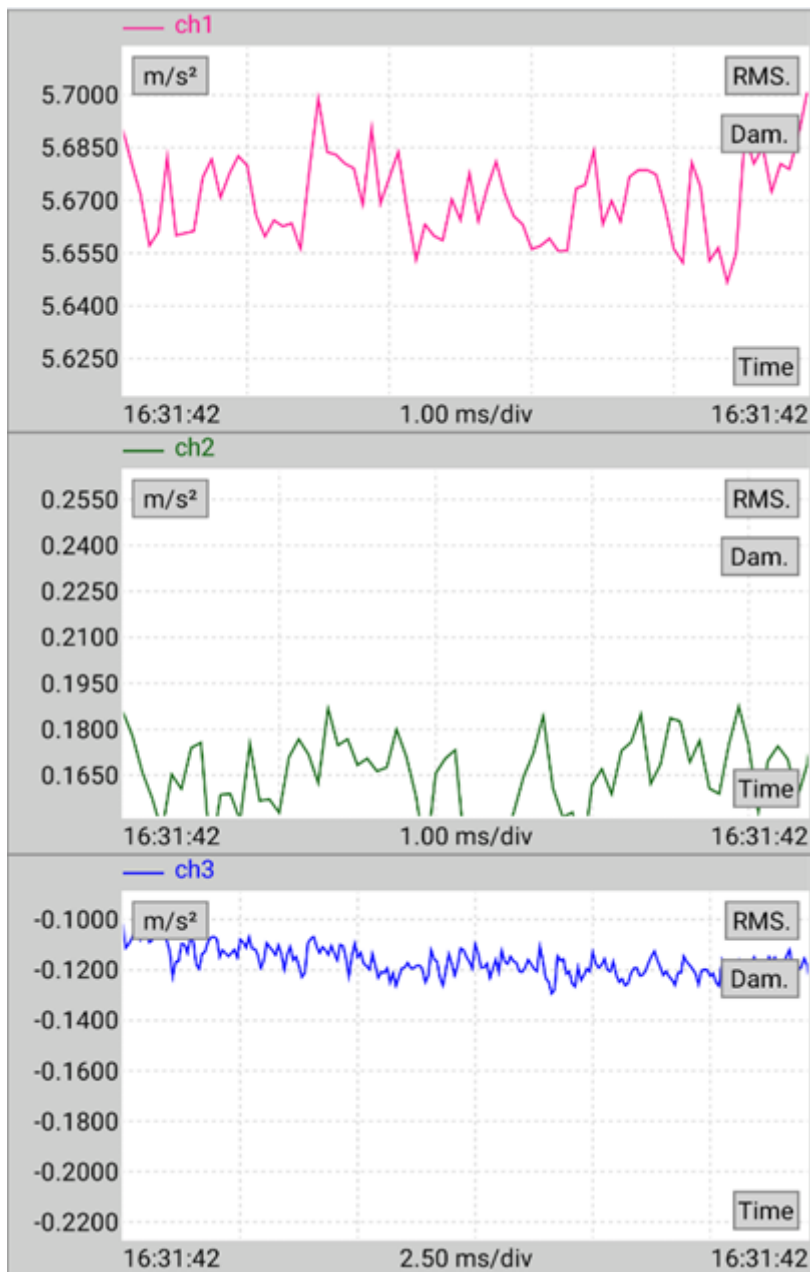


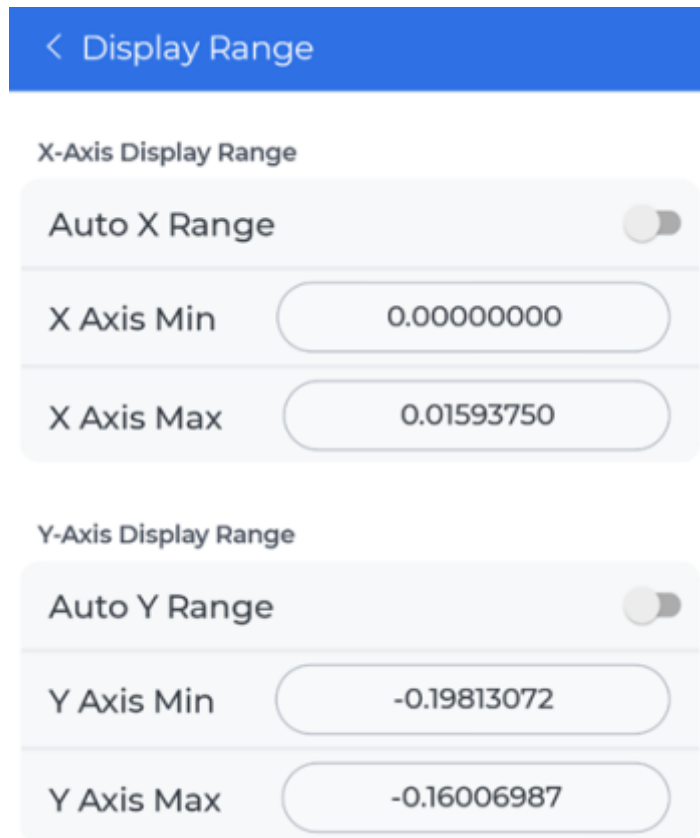
Moving and Zooming around in the Signal Display Traces

Each signal trace on a signal display page can be moved and zoomed around.



There are two ways to control the axis ranges:

- Zooming in and out via two fingers by pinching or expanding
- Tapping on the **X or Y axis** to set Auto range or a specific range



For more details on controlling specific signal display controls, see [Navigating Signal Display Controls](#).

From: <https://help.go-ci.com/> - **Crystal Instruments Help**

Permanent link: https://help.go-ci.com/ruby:quickguide:moving_and_zooming_around_in_the_signal_display_traces?rev=1749149892

Last update: **2025/06/05 18:58**