

Setting up alert Emails from VCS

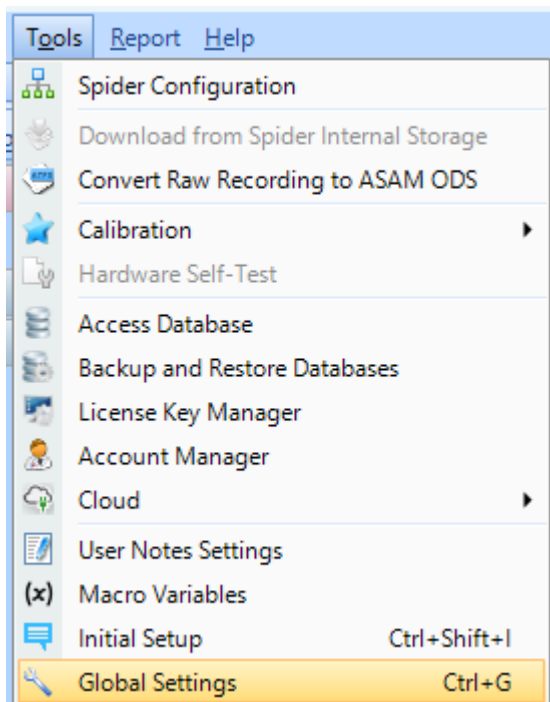
For Outlook

Setup

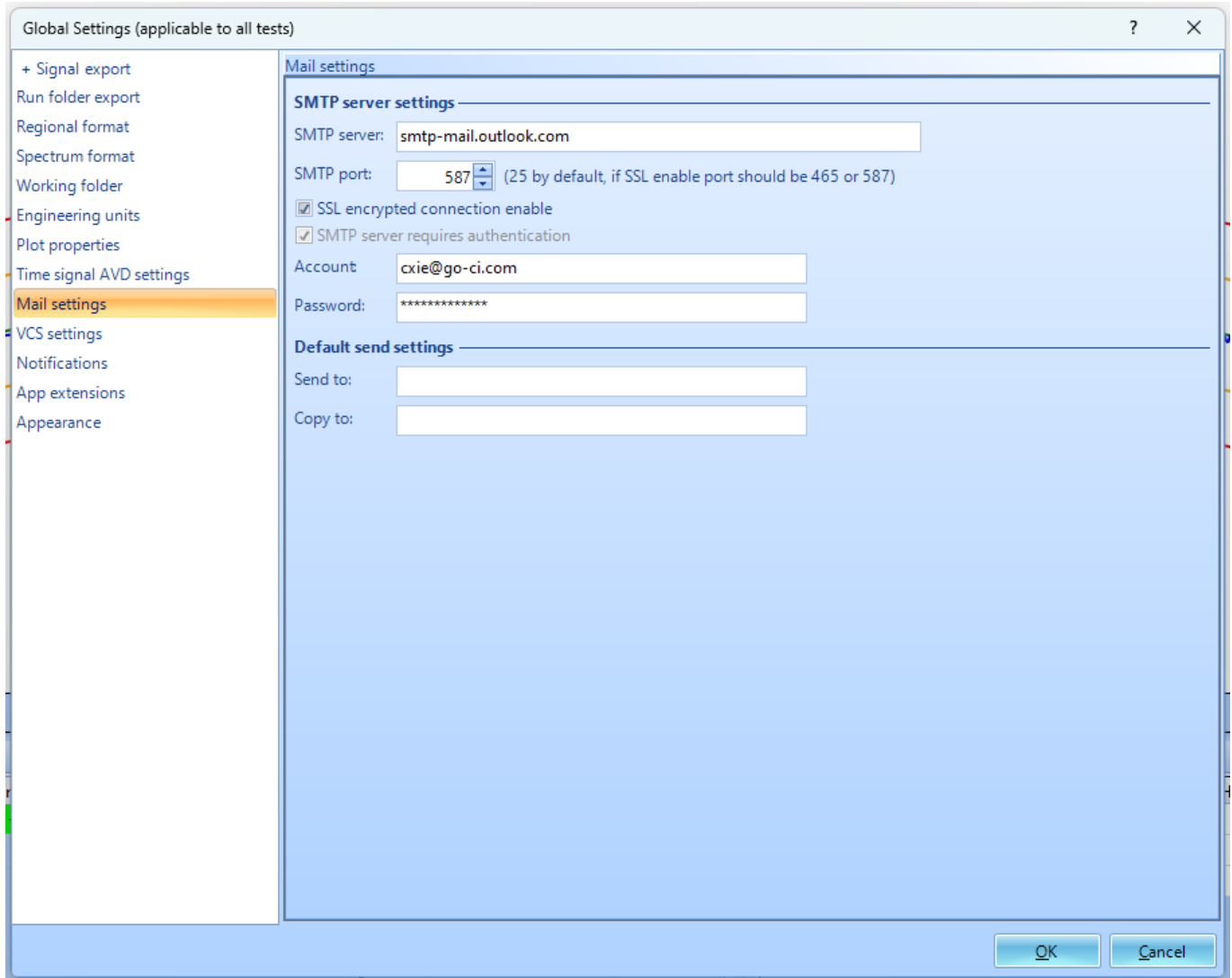
To start, we need to change the mail settings.

Mail Setting defines how EDM sends email per Event Action Rules. SMTP server address, port number, encryption type, and authentication parameters are specified as required. The Spider hardware (only version 7.x) is also equipped with a send email function that can be used when the email server doesn't require SSL encryption. Sending email through the hardware is not always available when SSL encryption is required. This feature enables sending emails in Black Box mode. The origin of email, either from the Spider hardware or the EDM, can be chosen from the Event Action Rules. Some email accounts have different SMTP server addresses that EDM must use in order to send emails. These SMTP Servers can be found in the primary email account settings, such as for Outlook in the POP and IMAP setting or searching for the keyword "SMTP"

We can use the shortcut Ctrl-G or under Tools, click Global Settings.



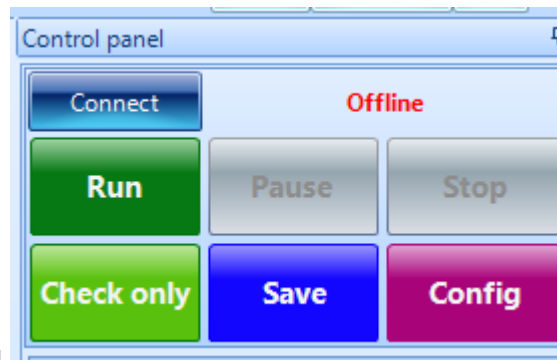
Once the window is up, on the left side, click Mail settings.



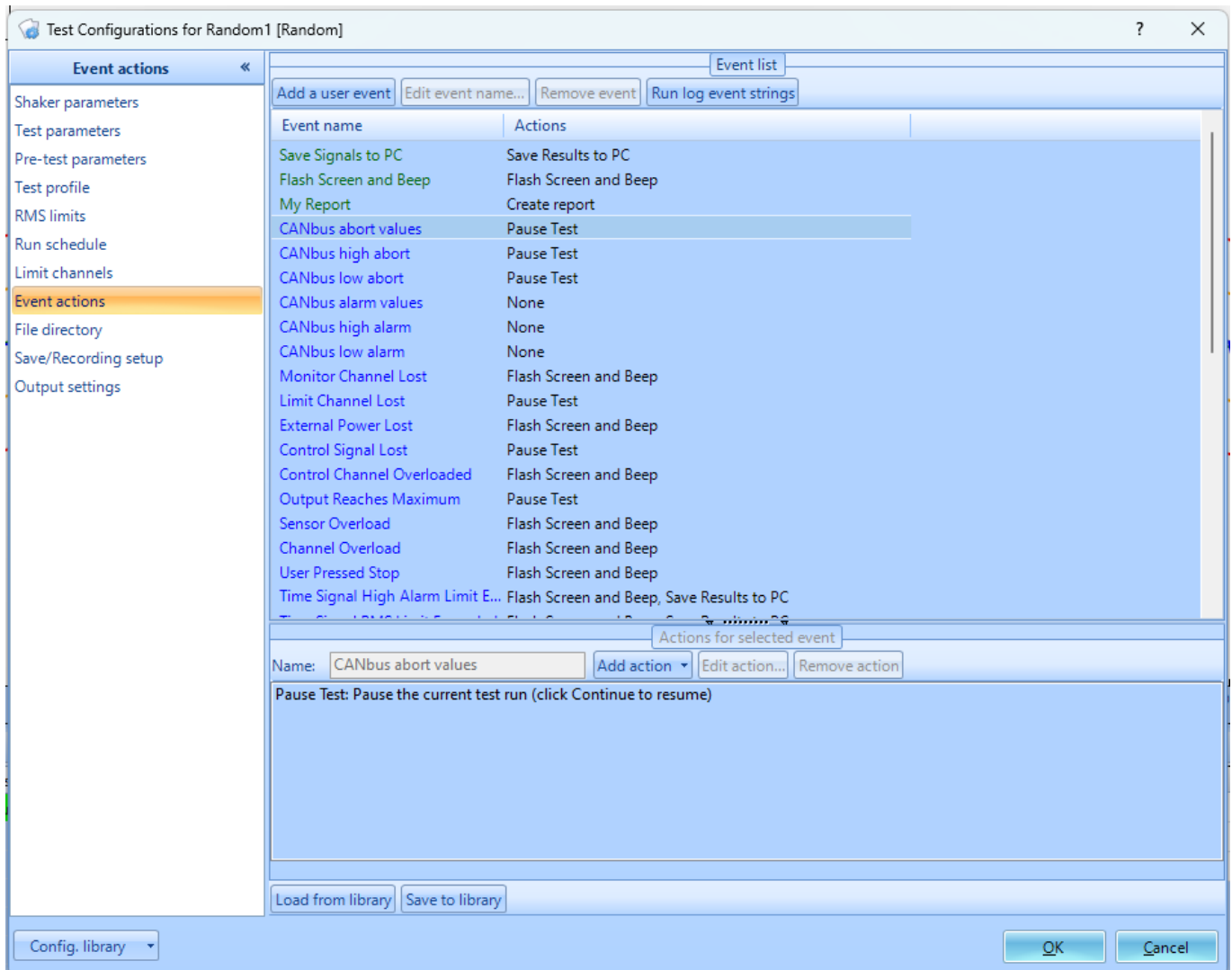
For Outlook, the SMTP server should be: **smtp-mail.outlook.com**
Change the SMTP port to the number that fits your needs.

Enter the outlook account and the password that you want the mail sent to.

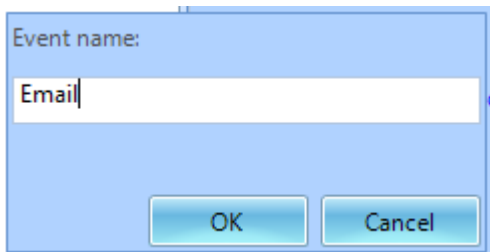
Creating the Event actions



In the control panel on the left, click **Config**.
Click **Event actions** on the left menu.



Click Add a user event under the event list. Change the Event name to your liking.

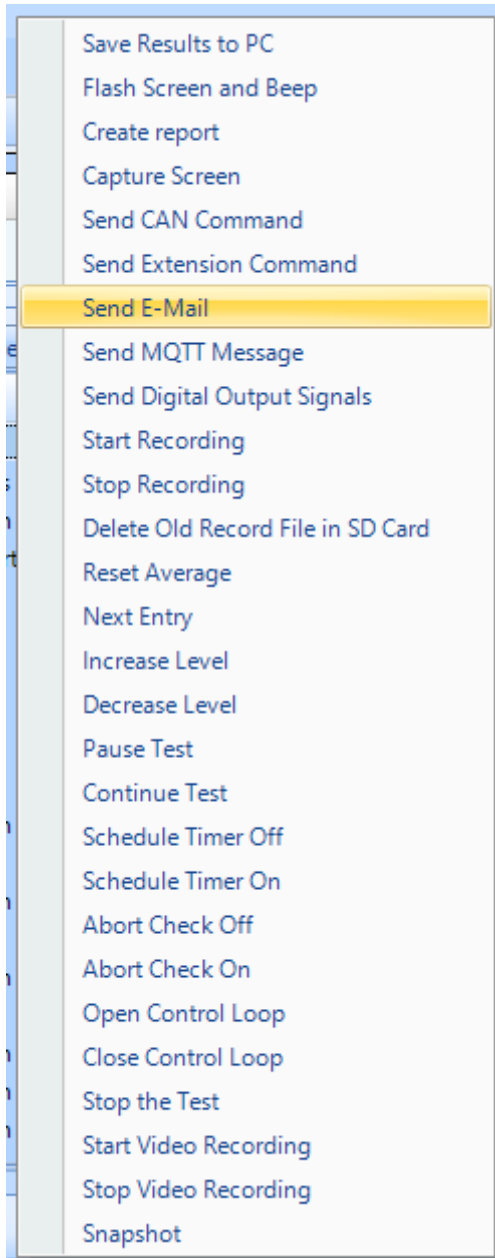


Click **Add action**.

The screenshot shows a software window titled "Test Configurations for Random1 [Random]". On the left is a sidebar menu with categories: Shaker parameters, Test parameters, Pre-test parameters, Test profile, RMS limits, Run schedule, Limit channels, **Event actions** (highlighted), File directory, Save/Recording setup, and Output settings. The main area is titled "Event list" and contains a table with two columns: "Event name" and "Actions".

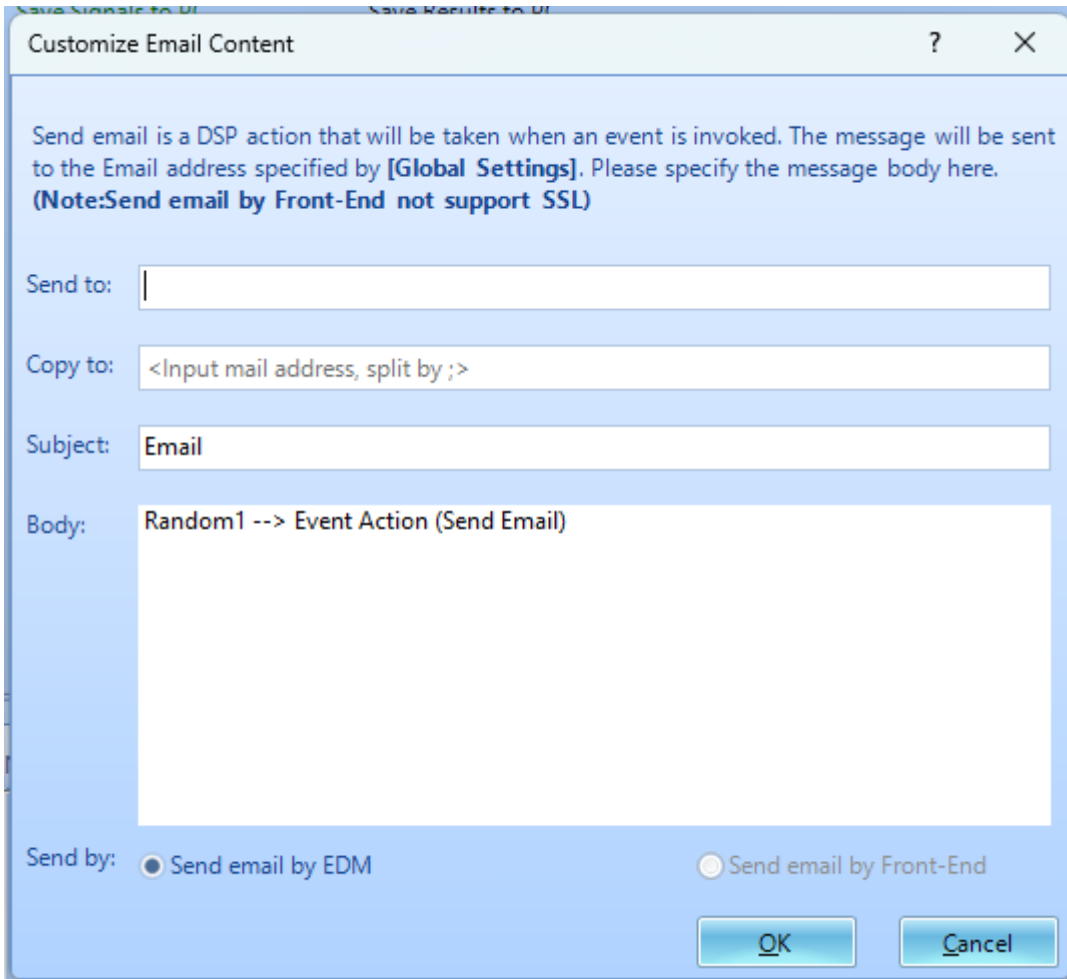
| Event name | Actions |
|----------------------------|-----------------------|
| Email | None |
| Save Signals to PC | Save Results to PC |
| Flash Screen and Beep | Flash Screen and Beep |
| My Report | Create report |
| CANbus abort values | Pause Test |
| CANbus high abort | Pause Test |
| CANbus low abort | Pause Test |
| CANbus alarm values | None |
| CANbus high alarm | None |
| CANbus low alarm | None |
| Monitor Channel Lost | Flash Screen and Beep |
| Limit Channel Lost | Pause Test |
| External Power Lost | Flash Screen and Beep |
| Control Signal Lost | Pause Test |
| Control Channel Overloaded | Flash Screen and Beep |
| Output Reaches Maximum | Pause Test |
| Sensor Overload | Flash Screen and Beep |
| Channel Overload | Flash Screen and Beep |
| User Pressed Stop | Flash Screen and Beep |

Below the table is a section titled "Actions for selected event". It includes a "Name:" field with "Email" entered, and buttons for "Add action", "Edit action...", and "Remove action". At the bottom of the window are "Load from library" and "Save to library" buttons, a "Config. library" dropdown, and "OK" and "Cancel" buttons.



Choose **Send E-mail**

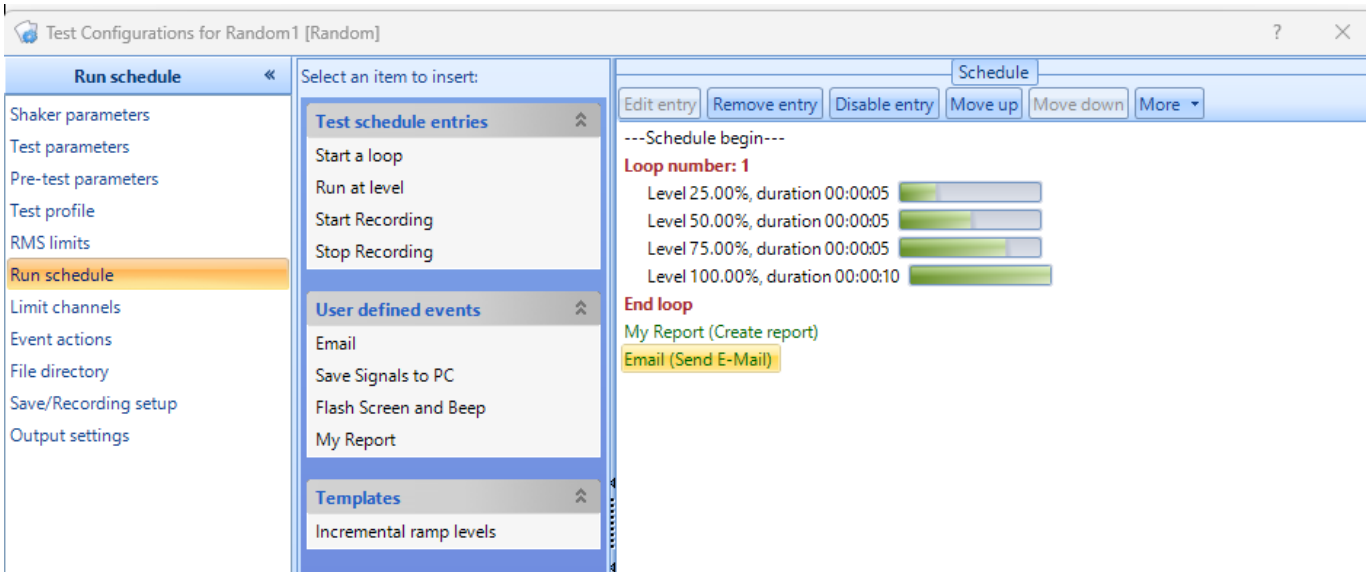
A new Customize Email Content will pop up.



Input mail address and change the subject and body to fit your needs.

Sending Emails

To use the event action that was just created, click **Run schedule** on the left. The event action created should be under **User defined events**. Click the the event action created to insert into the schedule.



From:

<https://help.go-ci.com/> - **Crystal Instruments Help**

Permanent link:

<https://help.go-ci.com/vcs:email-alerts?rev=1716577862>

Last update: **2024/05/24 19:11**