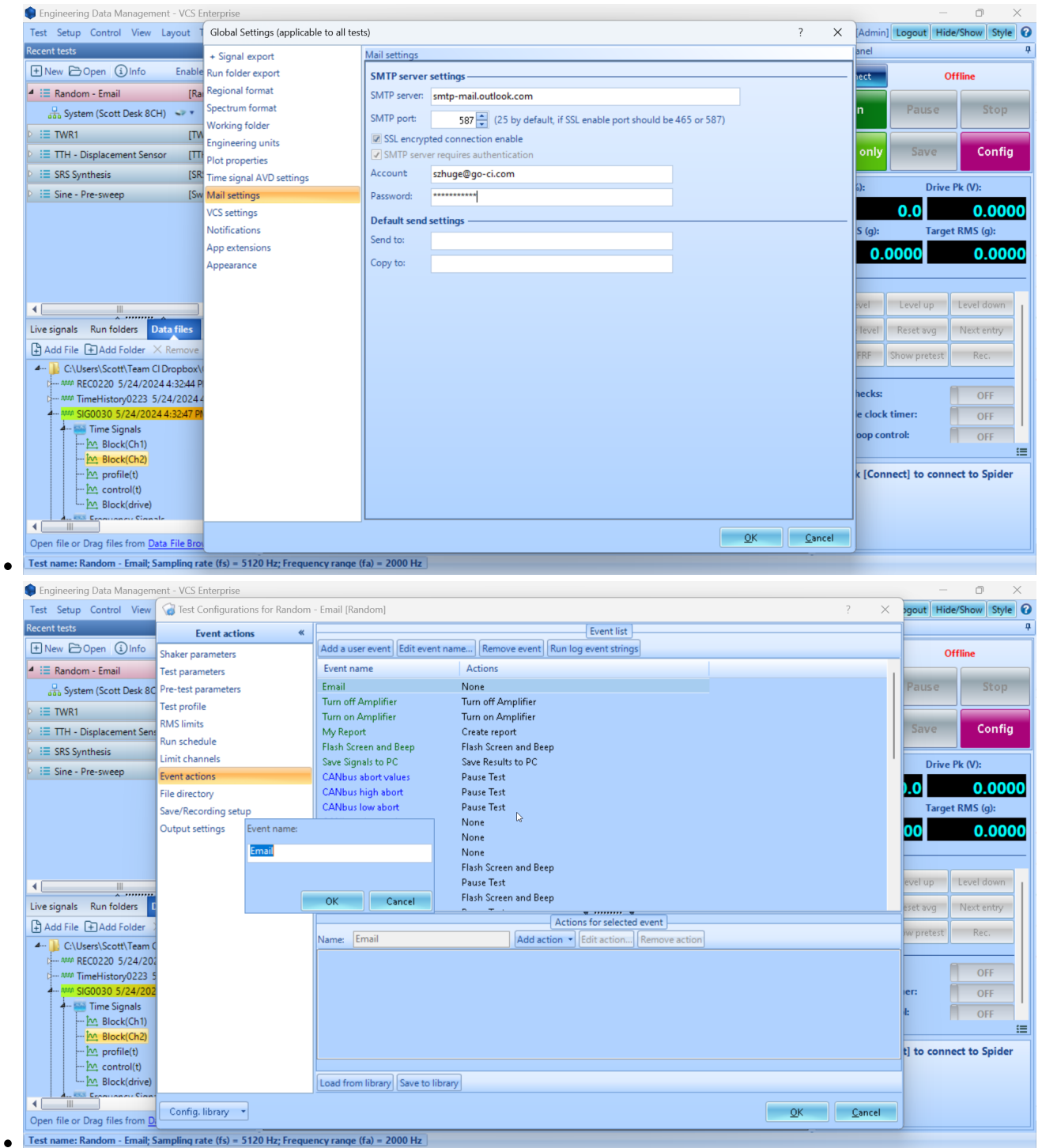
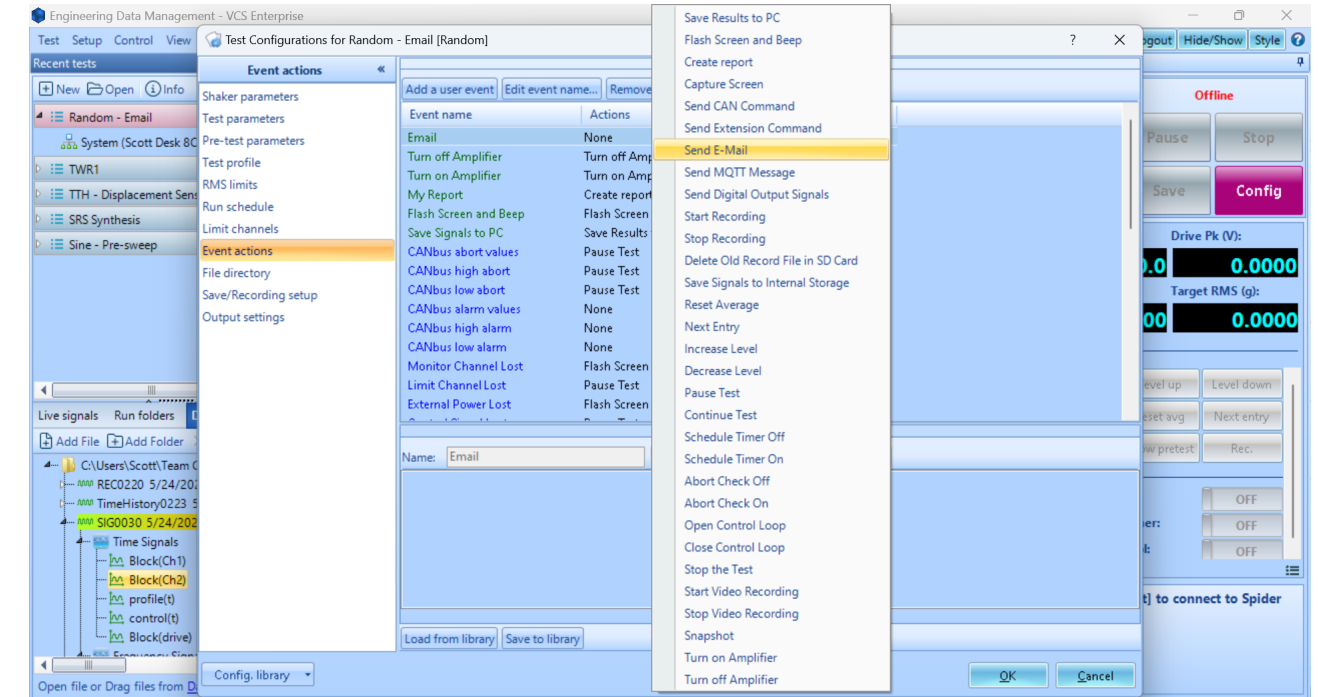
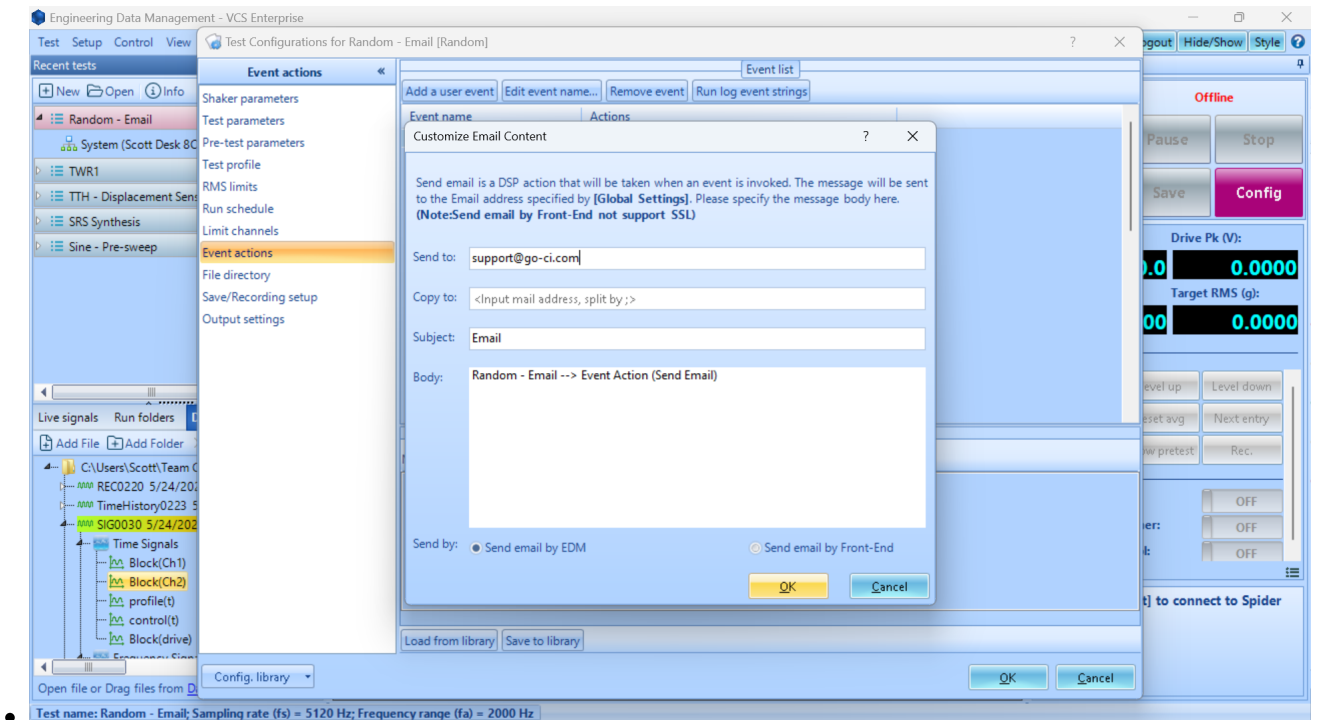


# Email Alert Setup Guide (EDM)

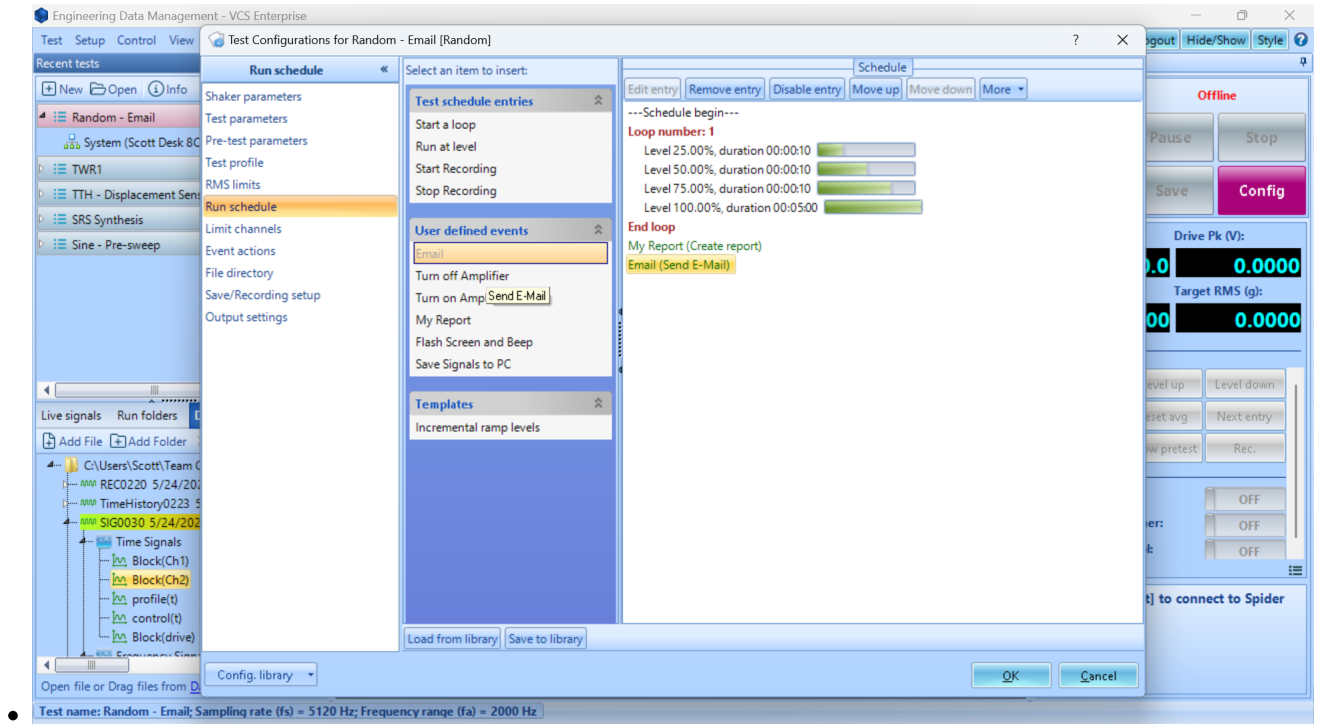




• Test name: Random - Email; Sampling rate (fs) = 5120 Hz; Frequency range (fa) = 2000 Hz



• Test name: Random - Email; Sampling rate (fs) = 5120 Hz; Frequency range (fa) = 2000 Hz



## Outlook (Office365) email setup

This section describes how to set up your email settings

- Navigate to **Tools > Global Settings** or click **Ctrl+G**
- Go to **Mail settings**
- Set the related parameters, for example:
  - **SMTP server:** smtp-mail.outlook.com
  - **SMTP port:** 587
  - Enable **SSL encrypted connection enable**
    - **Note:** SSL encrypted email sending can only be done through PC (Spider cannot send SSL encrypted emails in black-box mode)
  - **Account / Password:** your email credentials

## Event Action rules

This section describes how to send emails

- Open **Config / Setup > Test Configuration** or click **Ctrl+T**
- Go to **Event actions**
- Click **Add a user event** and assign it a name such as **Email**
- Select the **Email** event in the dropdown and fill out the relevant email fields
- Edit the **Run schedule** to send email where relevant

From:

<https://help.go-ci.com/> - **Crystal Instruments Help**

Permanent link:

<https://help.go-ci.com/vcs:email-alerts?rev=1716589156>

Last update: **2024/05/24 22:19**