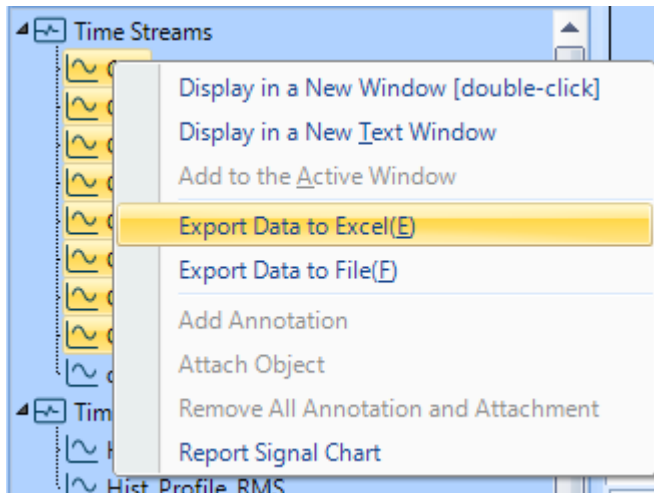


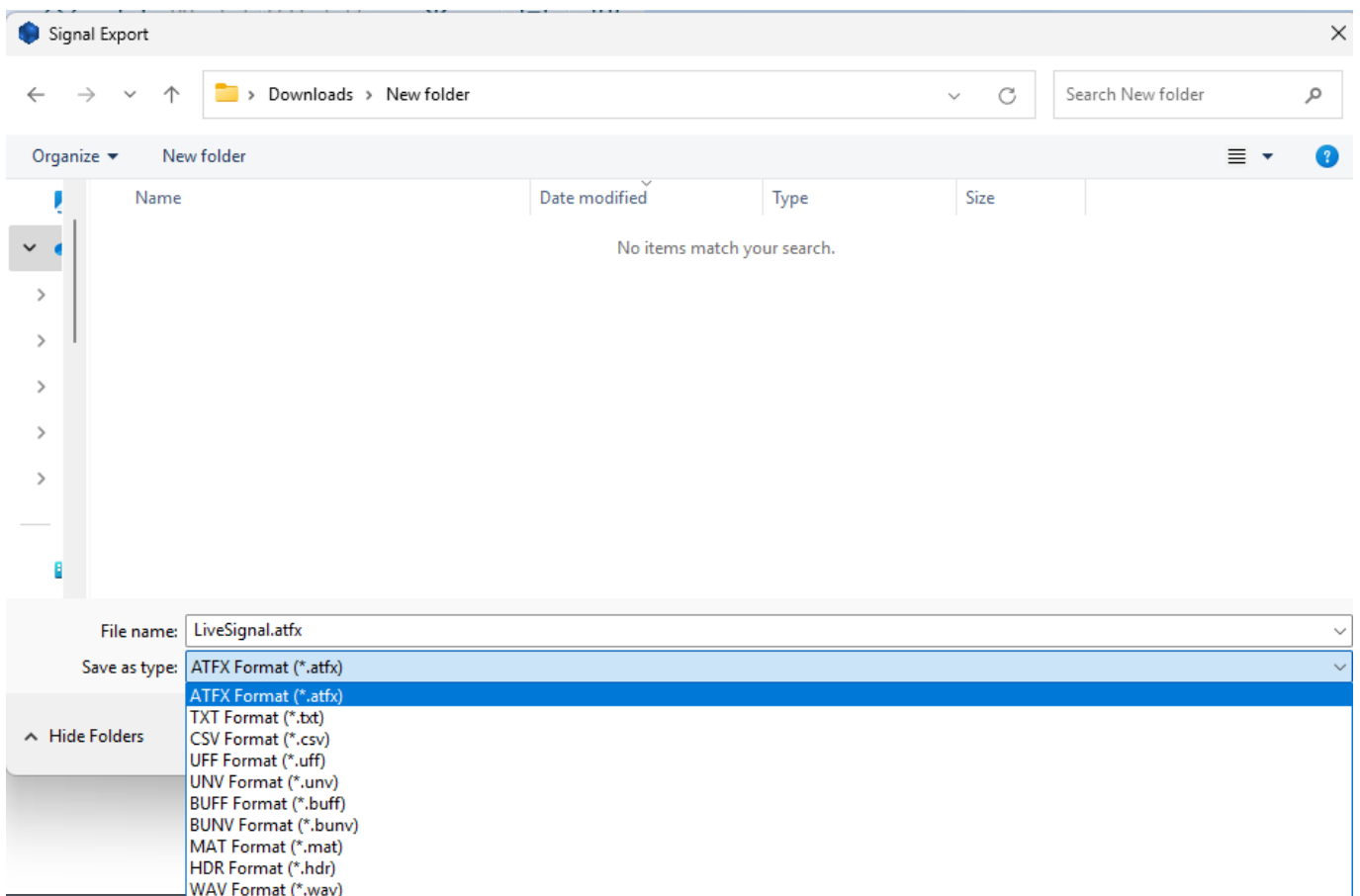
Exporting Data to Different Formats

Most information can be exported through right clicking and selecting the Export option.



Choosing to export data to Excel will export files into a .xlsx file type.

Select Export Data to File to select other file types such as .atfx, .txt, .csv, .uff, .unv, .buff, .bunv, .mat, .hdr, or .wav to be exported.



From:

<https://help.go-ci.com/> - **Crystal Instruments Help**

Permanent link:

<https://help.go-ci.com/vcs:exportdata?rev=1743532374>

Last update: **2025/04/01 18:32**