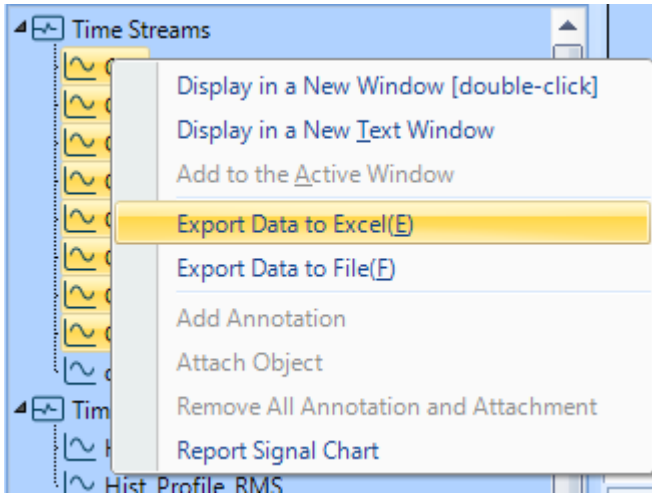


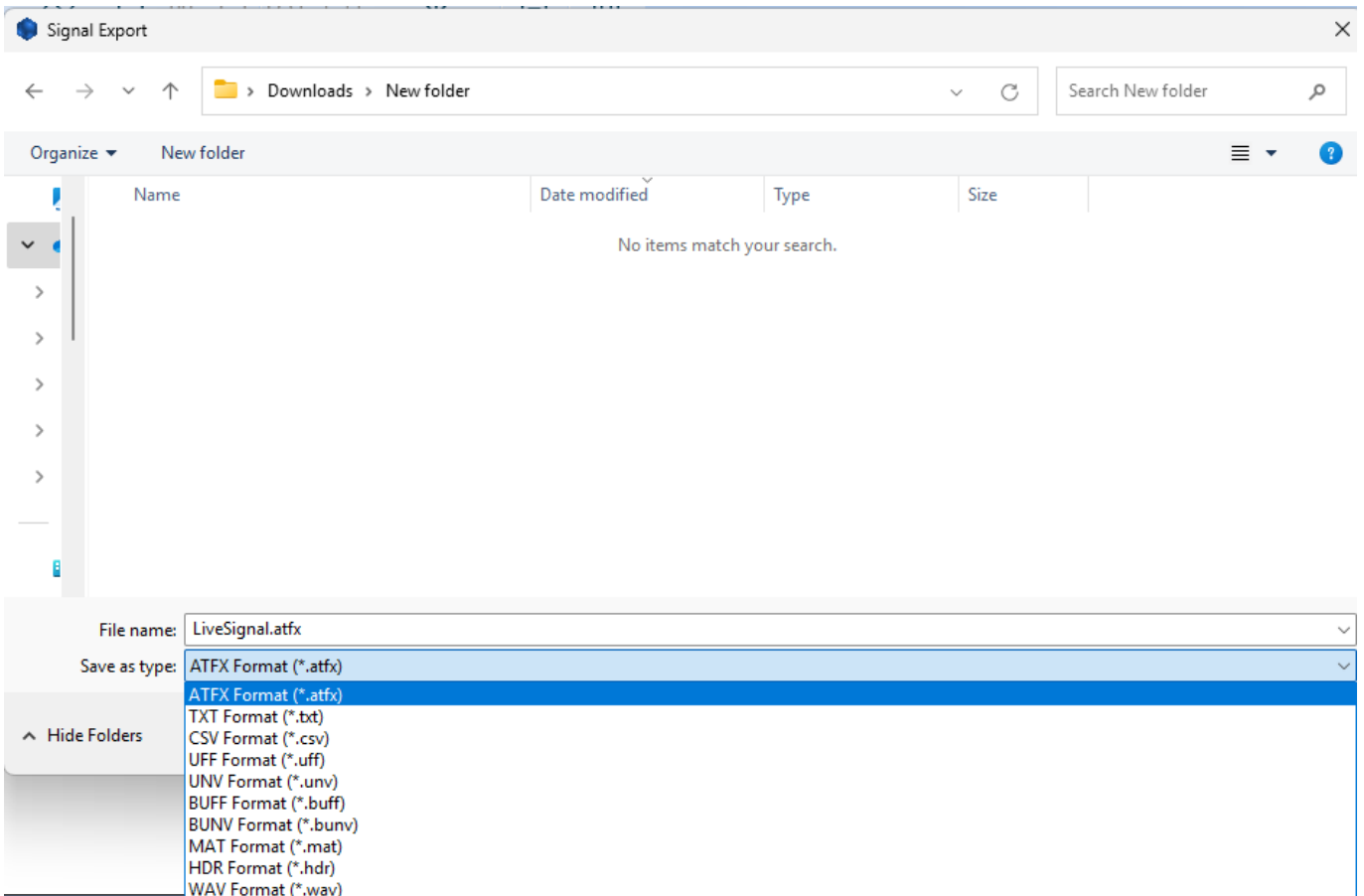
Exporting Data to Different Formats

Most information can be exported through right clicking and selecting the Export option.



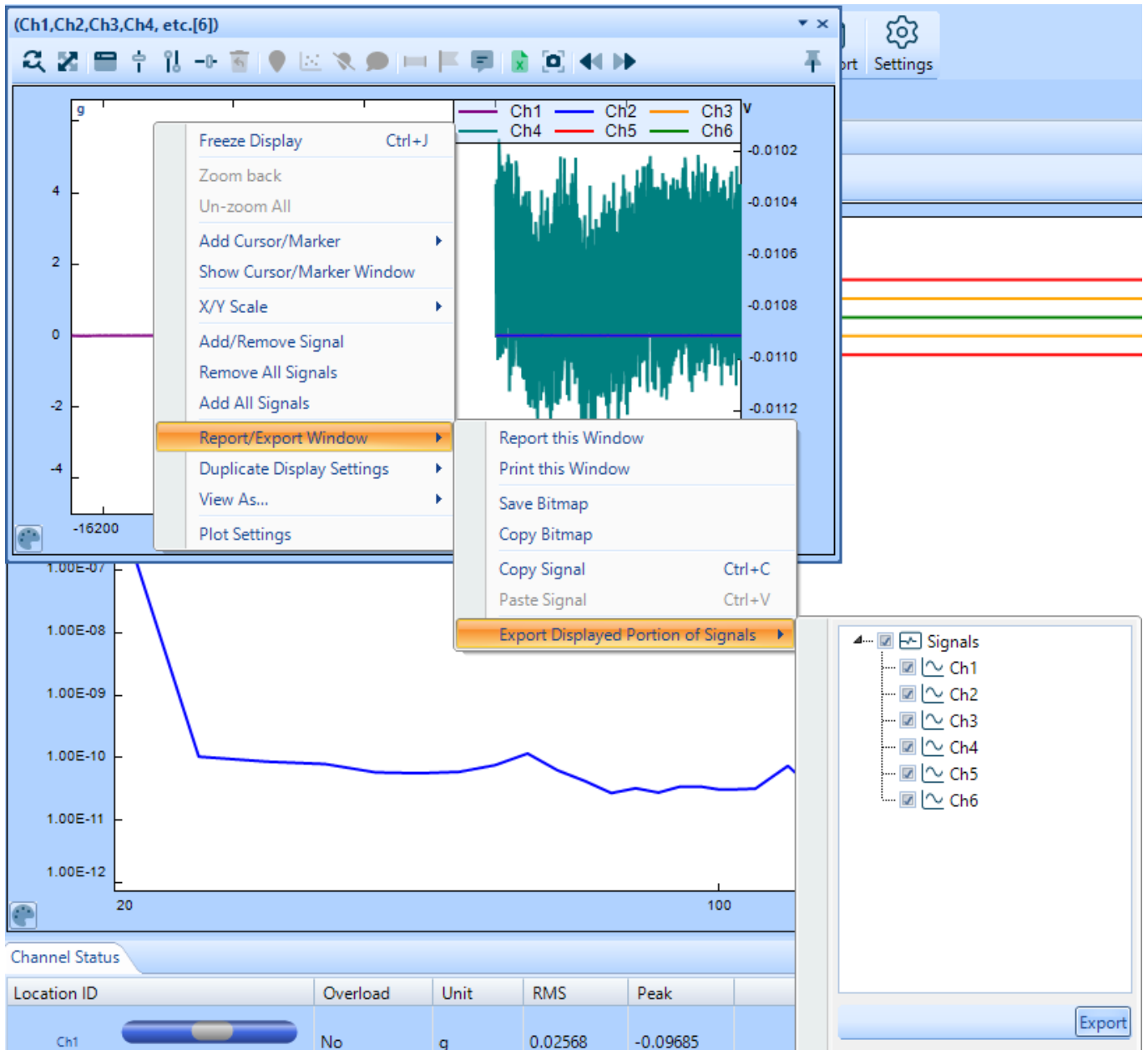
Choosing to export data to Excel will export files into a .xlsx file type.

Select Export Data to File to select other file types such as .atfx, .txt, .csv, .uff, .unv, .buff, .bunv, .mat, .hdr, or .wav to be exported.



Exporting Graphs

Graphs can be right clicked and exported with the same export options. If multiple graphs are within the window, each file can be selected and chosen to be exported.



From: <https://help.go-ci.com/> - **Crystal Instruments Help**

Permanent link: <https://help.go-ci.com/vcs:exportdata?rev=1743532830>

Last update: **2025/04/01 18:40**