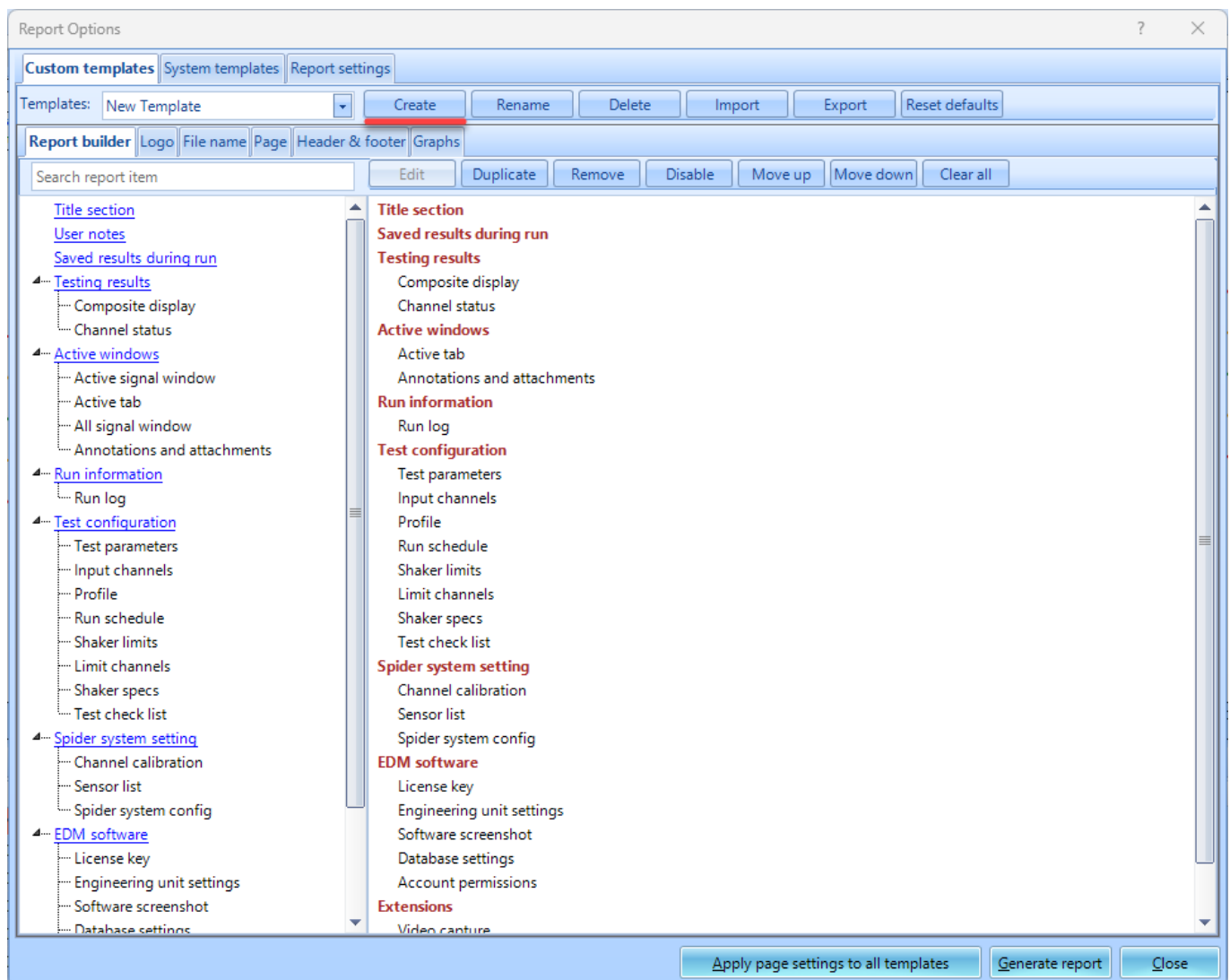


Generate Reports

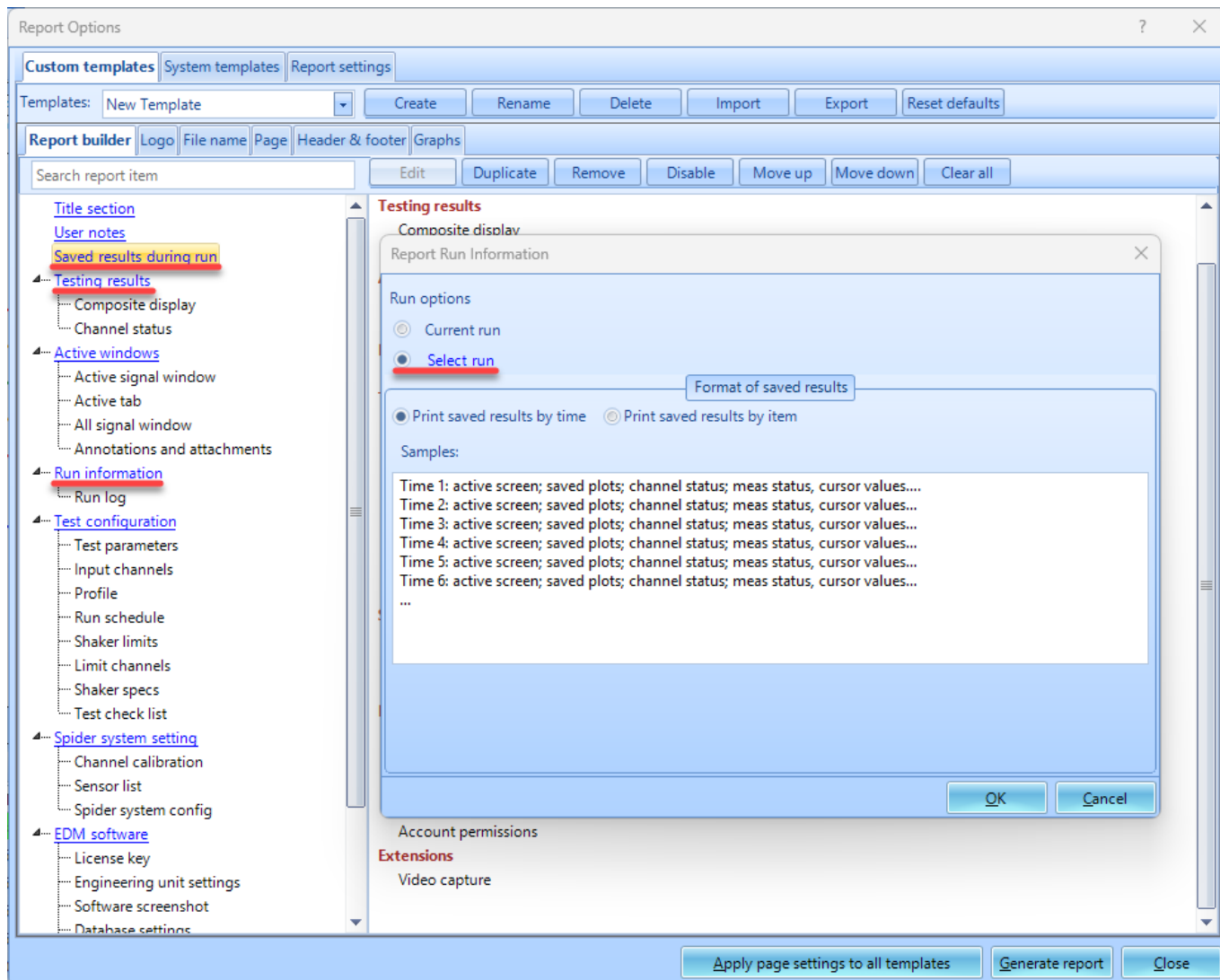
To first generate a report, an existing template needs to be set to choose what information will be included in the report. By default, the custom template *My Report* is created. The *My Report* cannot be renamed or deleted, but the items in the template can be edited. A user defined event is also automatically generated for creating a *My Report* report at the end of the run schedule.

Create a Template

To view/edit items in the template, click **Report > Report Template**. To generate a new template, click **Create > Enter Template Name > click OK**.



Add items to the template by grabbing report items on the left. Clicking certain items can allow users to add data from past runs/data files in the template. This means a report can be generated with data from all runs from the test.



Automating Report Generation

Navigate to the **Test Configurations** menu under the control panel or click **Ctrl+T** > click **Event actions** > **Add a user event** > **Enter event name** > **Click Ok** > **Add action** > **Create Report** > **Select Report Template** > **Ok**

After event is generated, go to **Run schedule** > **add your newly generated event**

After event is generated, go to **Run schedule** > **add your newly generated event**

Test Configurations for Testing [Random]

Event actions

Shaker parameters

Test parameters

Pre-test parameters

Test profile

RMS limits

Run schedule

Limit channels

Event actions

File directory

Save/Recording setup

Output settings

Event list

Add a user event

Edit event name...

Remove event

Run log event strings

Event name	Actions
Turn off Amplifier	Turn off Amplifier
Turn on Amplifier	Turn on Amplifier
My Report	Create report
Flash Screen and Beep	Flash Screen and Beep
Save Signals to PC	Save Results to PC
CANbus abort values	Pause Test
CANbus high abort	Pause Test
CANbus low abort	Pause Test
CANbus alarm values	None
CANbus high alarm	None
CANbus low alarm	None
Monitor Channel Lost	
Limit Channel Lost	
External Power Lost	
Control Signal Lost	
Control Channel Overload	
Output Reaches Maximum	
Sensor Overload	
Channel Overload	

Event name:

Generate New Report Template

OK

Cancel

Actions for selected event

Name:

Add action

Edit action...

Remove action

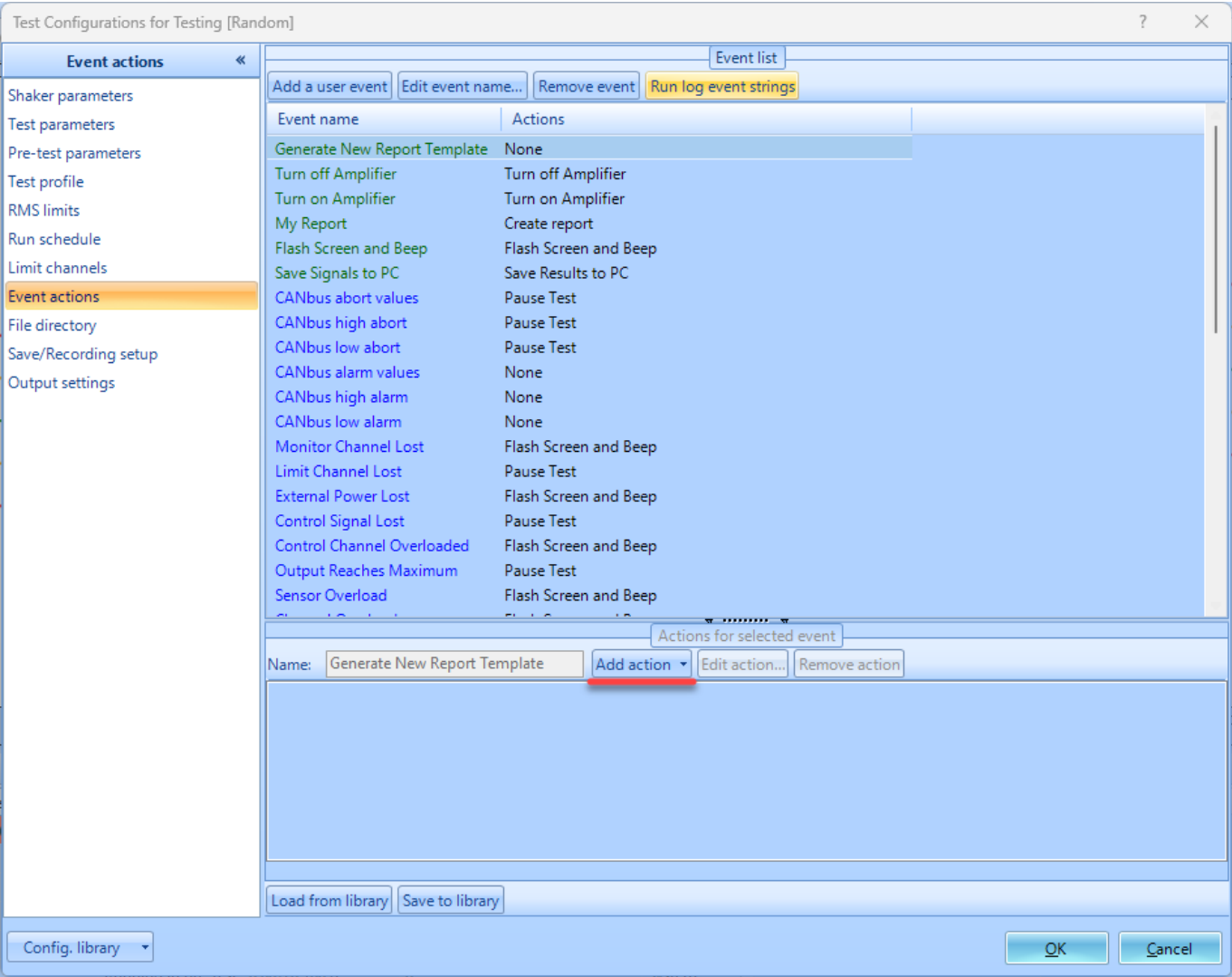
Load from library

Save to library

Config. library

OK

Cancel



From:
<https://help.go-ci.com/> - **Crystal Instruments Help**

Permanent link:
<https://help.go-ci.com/vcs:report?rev=1741288550>

Last update: **2025/03/06 19:15**