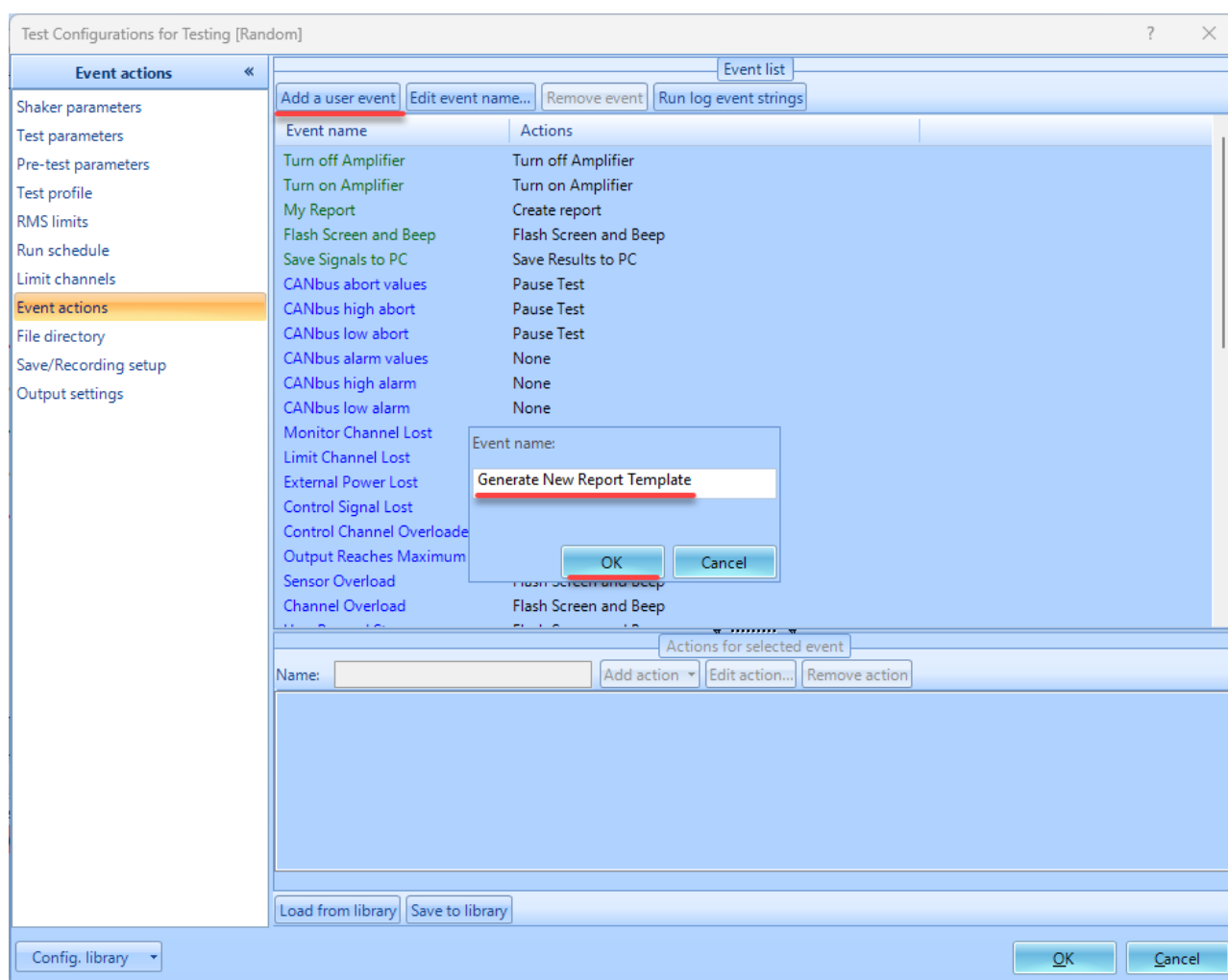


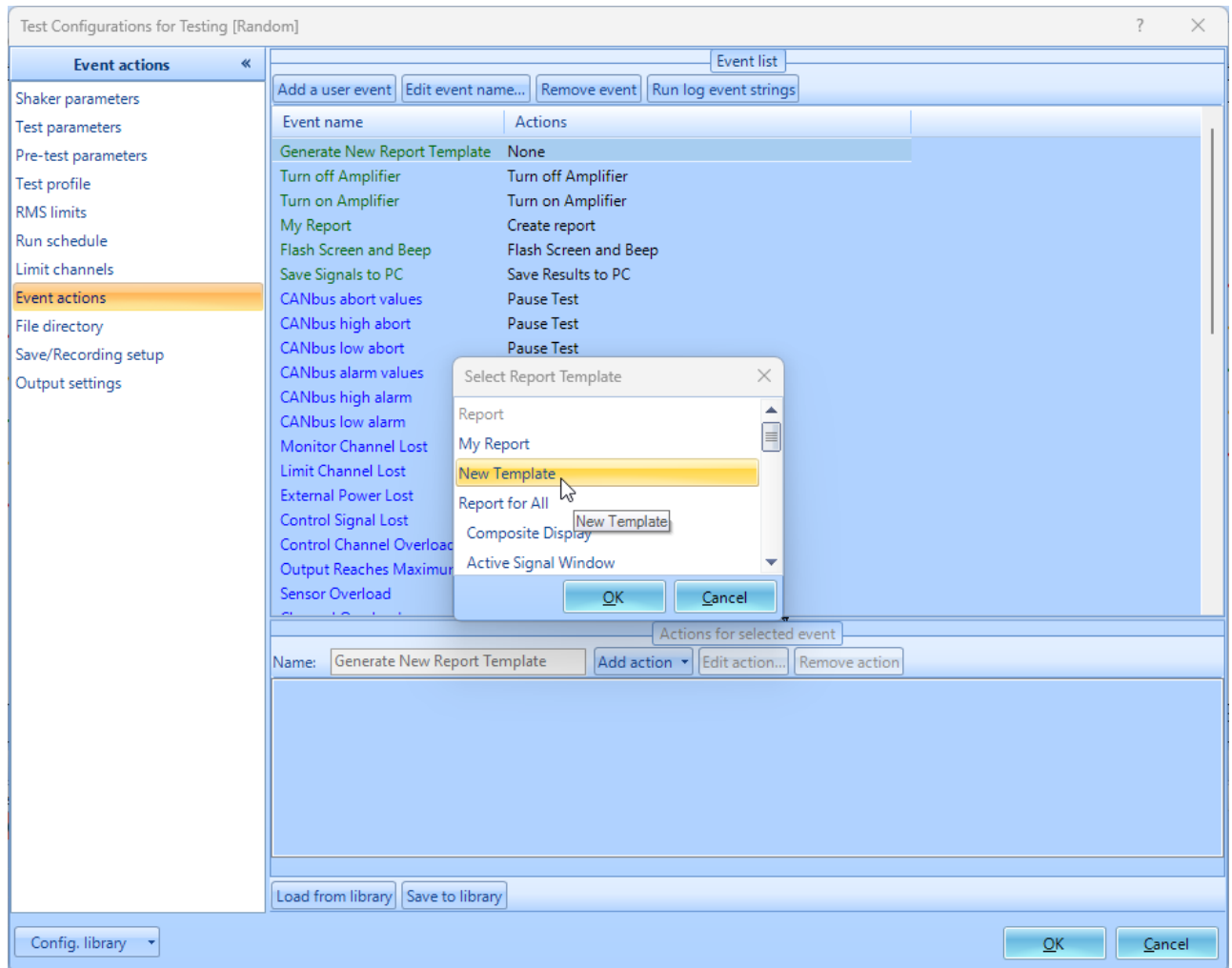
Generate Reports

To first generate a report, an existing template needs to be set to choose what information will be included in the report. By default, the custom template *My Report* is created. The *My Report* cannot be renamed or deleted, but the items in the template can be edited. A user defined event is also automatically generated for creating a *My Report* report at the end of the run schedule.

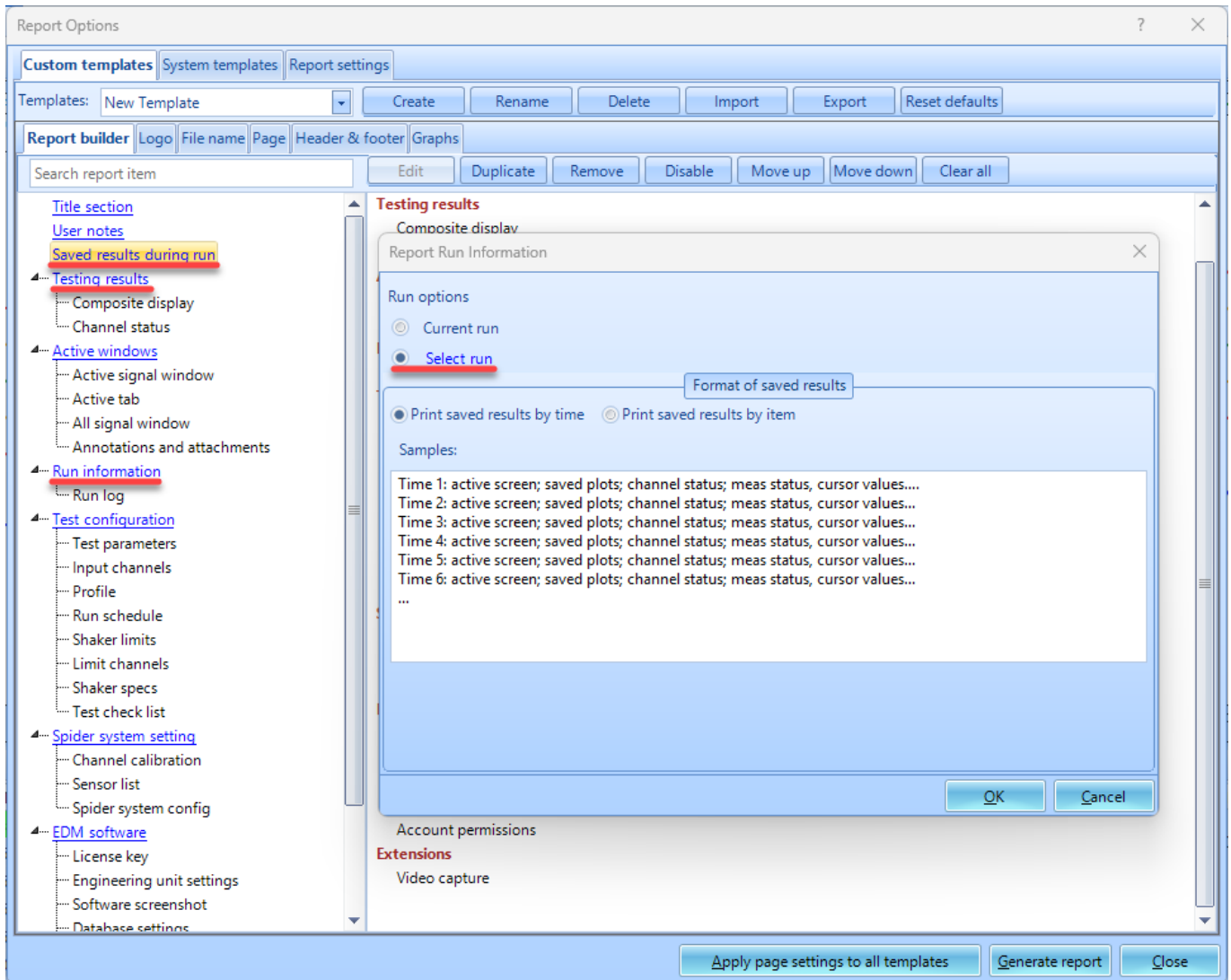
Create a Template

To view/edit items in the template, click **Report > Report Template**. To generate a new template, click **Create > Enter Template Name** > click **OK**.





Add items to the template by grabbing report items on the left. Clicking certain items can allow users to add data from past runs/data files in the template. This means a report can be generated with data from all runs from the test.

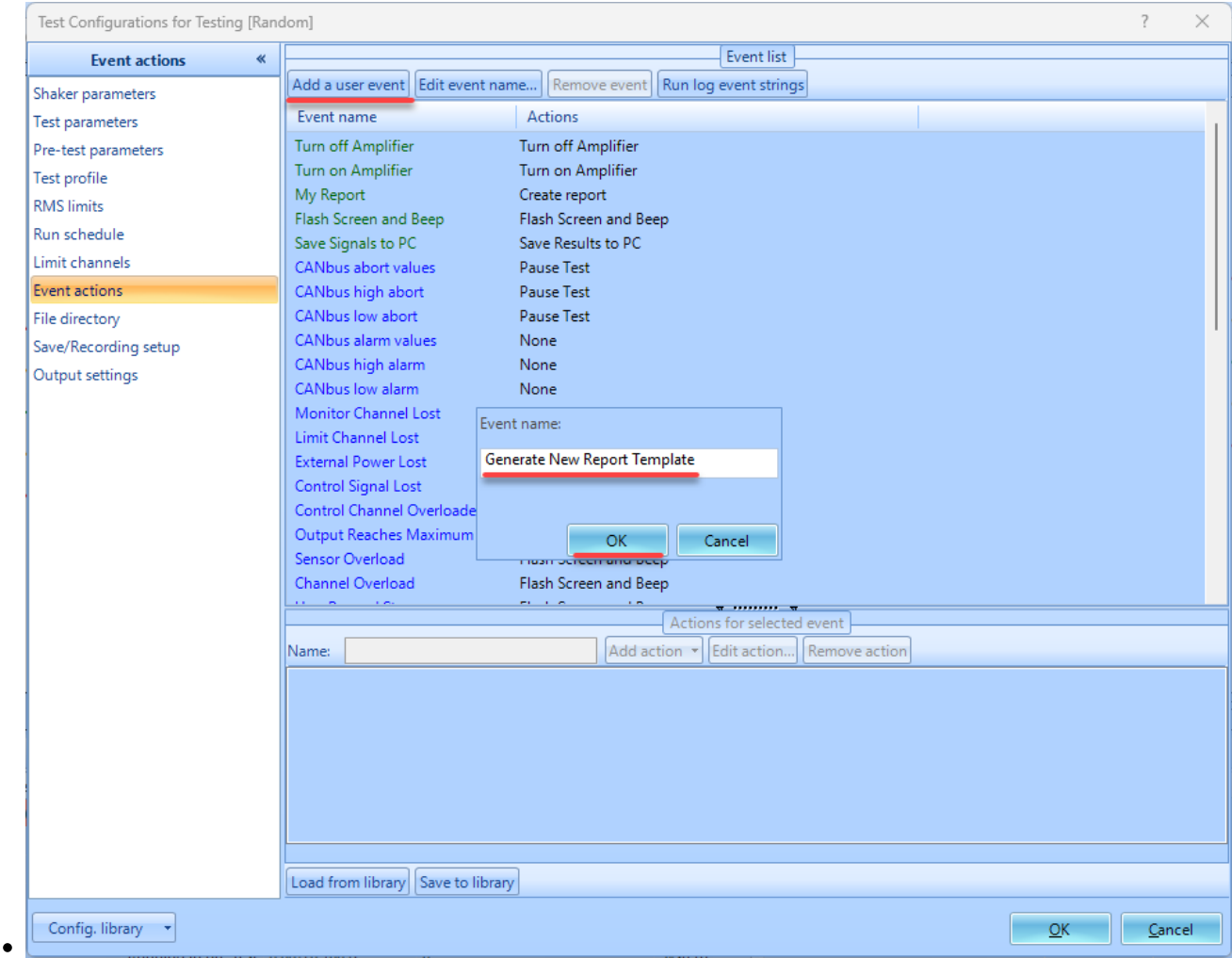


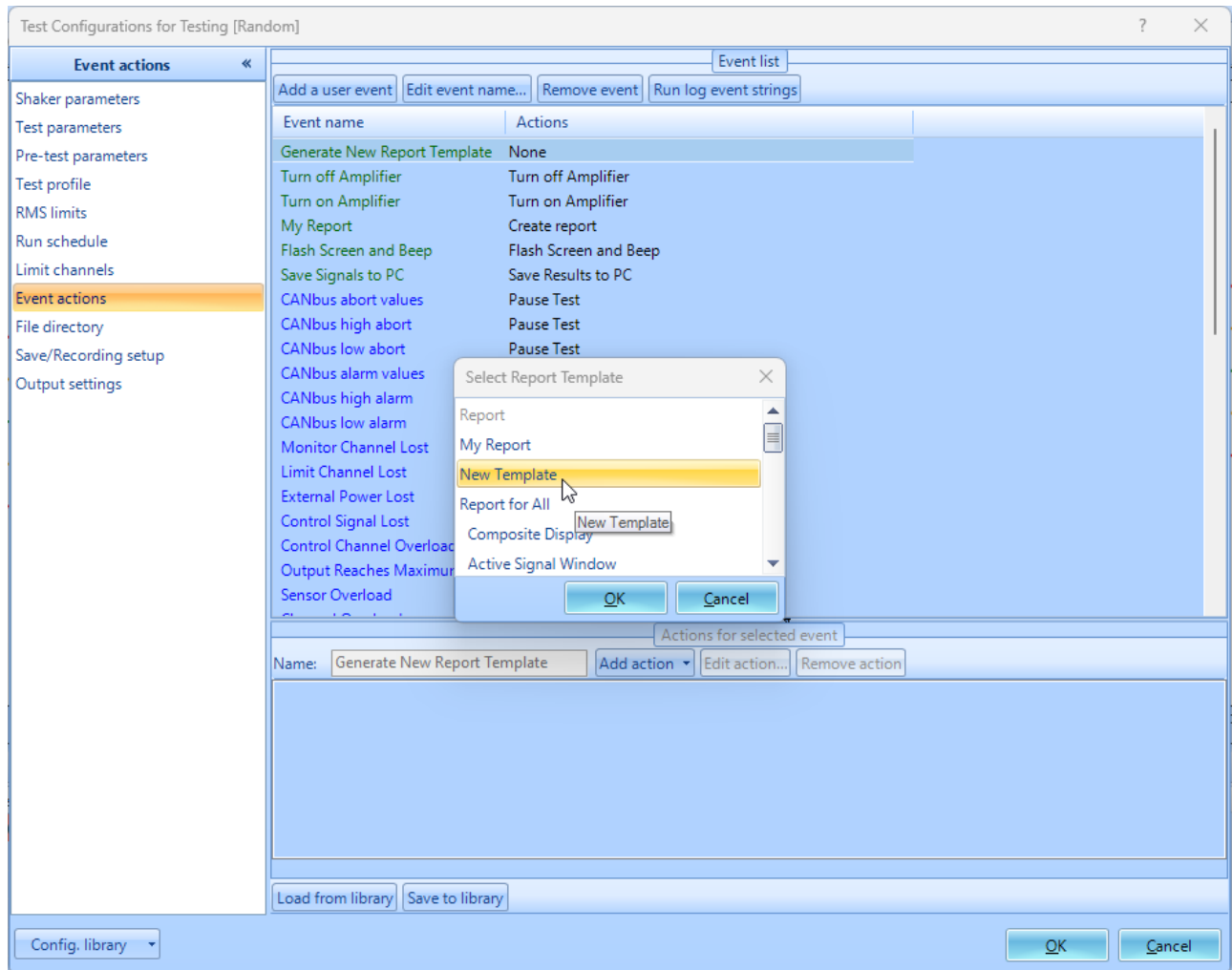
Automating Report Generation

Navigate to the **Test Configurations** menu under the control panel or click **Ctrl+T** > click **Event actions** > **Add a user event** > **Enter event name** > **Click Ok** > **Add action** > **Create Report** > **Select Report Template** > **Ok**

After event is generated, go to **Run schedule** > **add your newly generated event**

After event is generated, go to **Run schedule** > **add your newly generated event**





From:
<https://help.go-ci.com/> - **Crystal Instruments Help**

Permanent link:
<https://help.go-ci.com/vcs:report?rev=1741288897>

Last update: **2025/03/06 19:21**