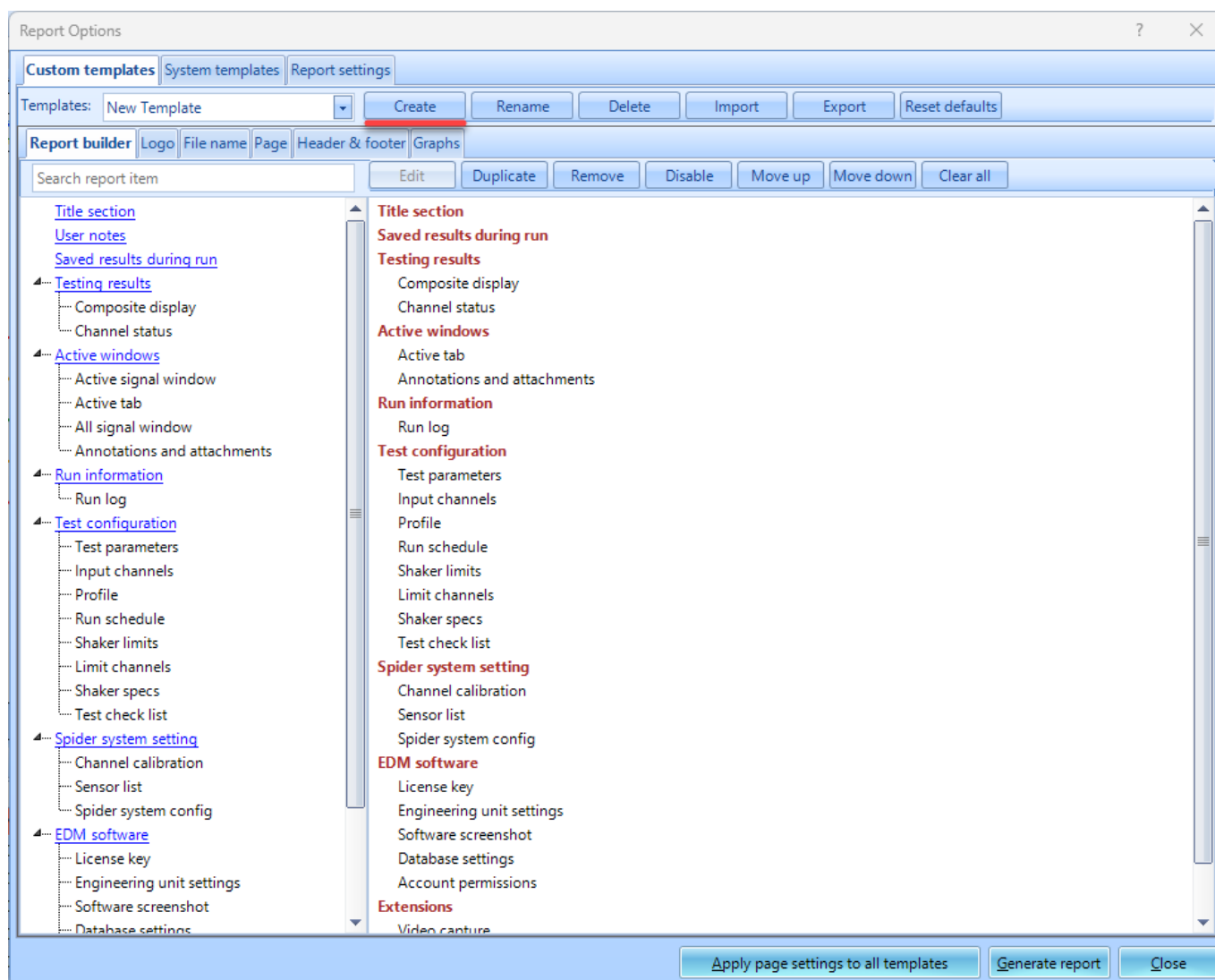


# Generate Reports

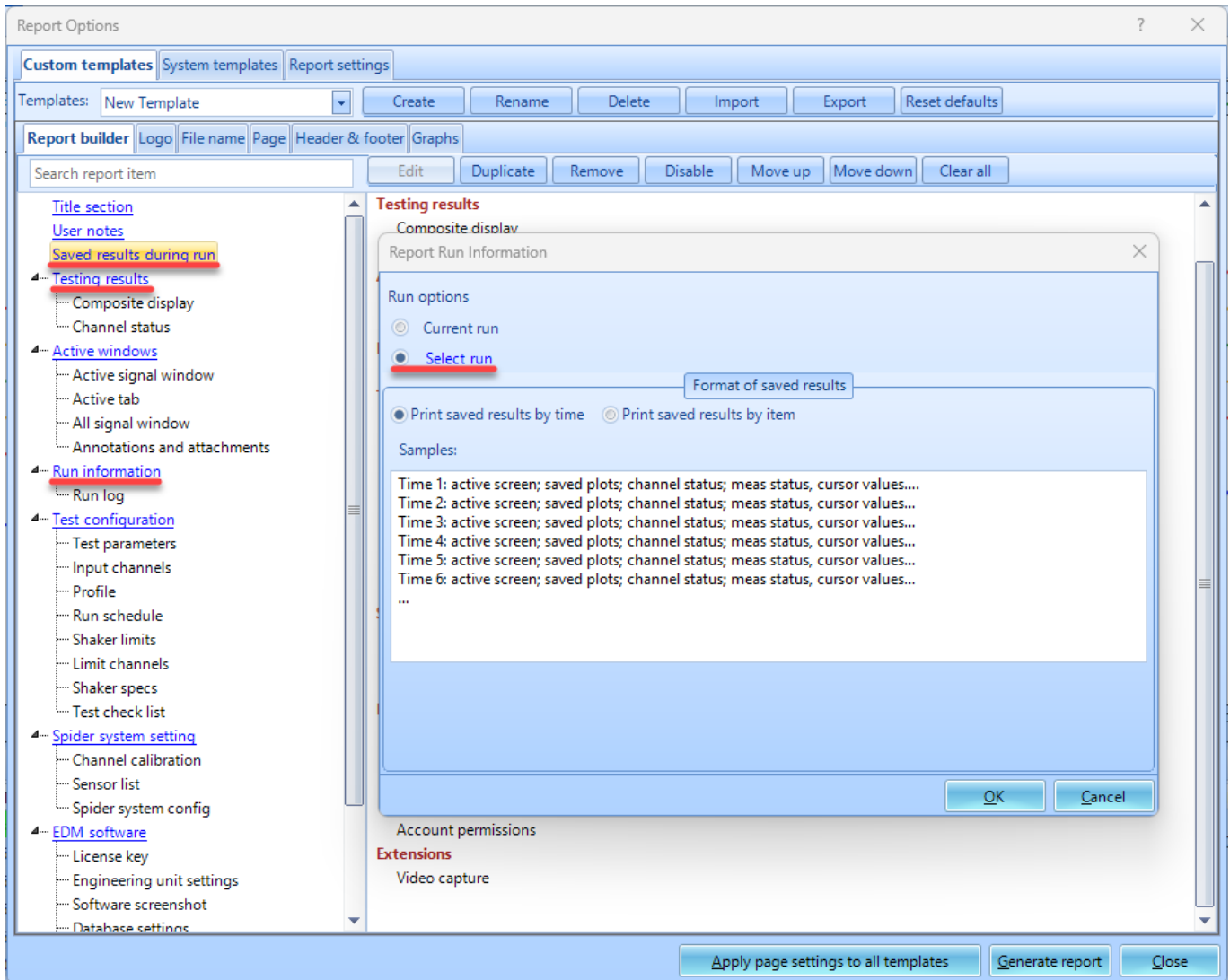
To first generate a report, an existing template needs to be set to choose what information will be included in the report. By default, the custom template *My Report* is created. The *My Report* cannot be renamed or deleted, but the items in the template can be edited. A user defined event is also automatically generated for creating a *My Report* report at the end of the run schedule.

## Create a Template

To view/edit items in the template, click **Report > Report Template**. To generate a new template, click **Create > Enter Template Name > click OK**.



Add items to the template by grabbing report items on the left. Clicking certain items can allow users to add data from past runs/data files in the template. This means a report can be generated with data from all runs from the test.



## Automating Report Generation

### Add My Report Template

By default, the custom template My Report has a event action already created. The report can be added to the Run schedule by clicking the My Report user defined event.

### Add Custom Template

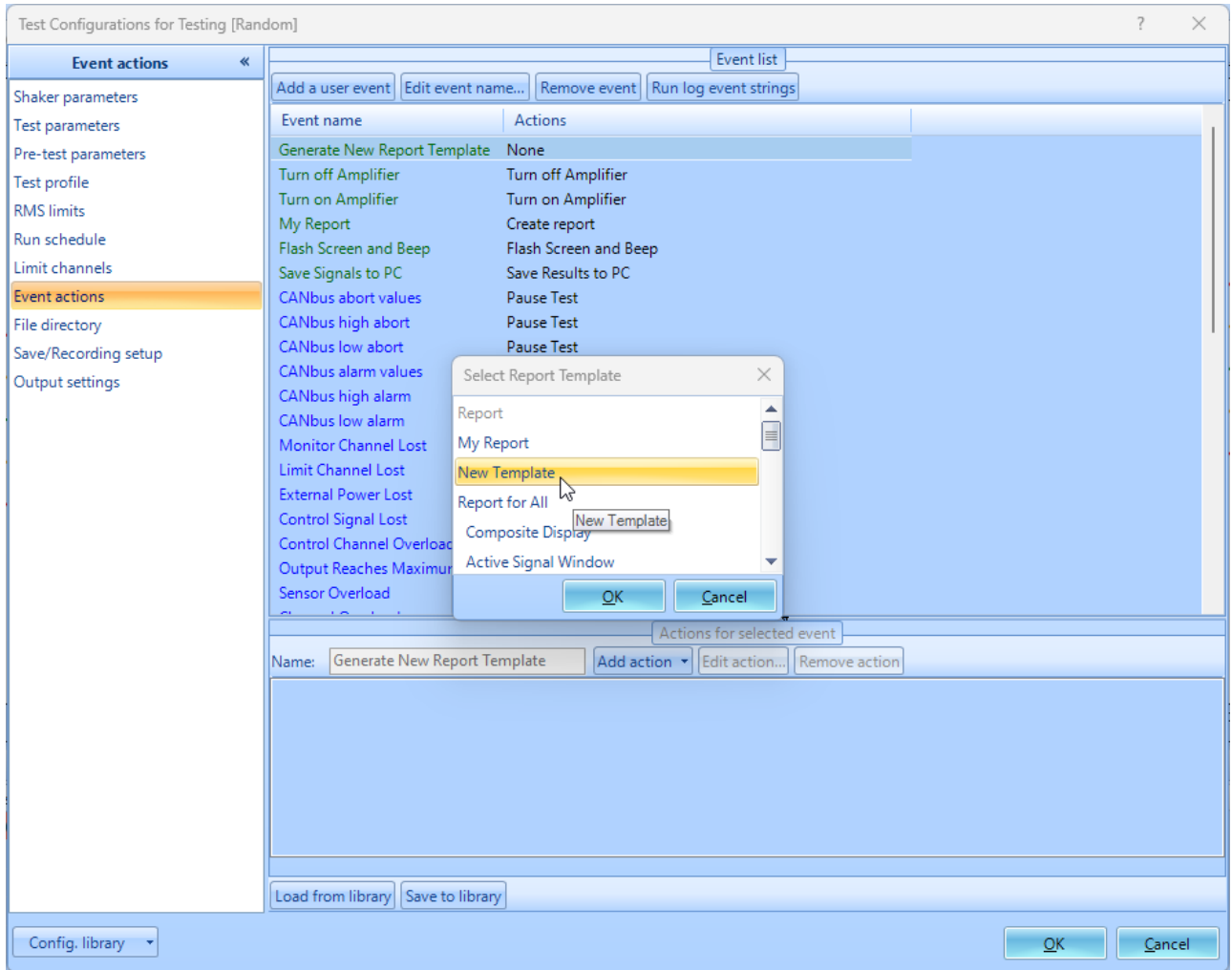
To create your own event action from a newly created template, navigate to the Test Configurations menu under the control panel or click Ctrl+T > click Event actions > Add a user event > Enter event name > Click Ok > Add action > Create Report > Select Report Template > Ok

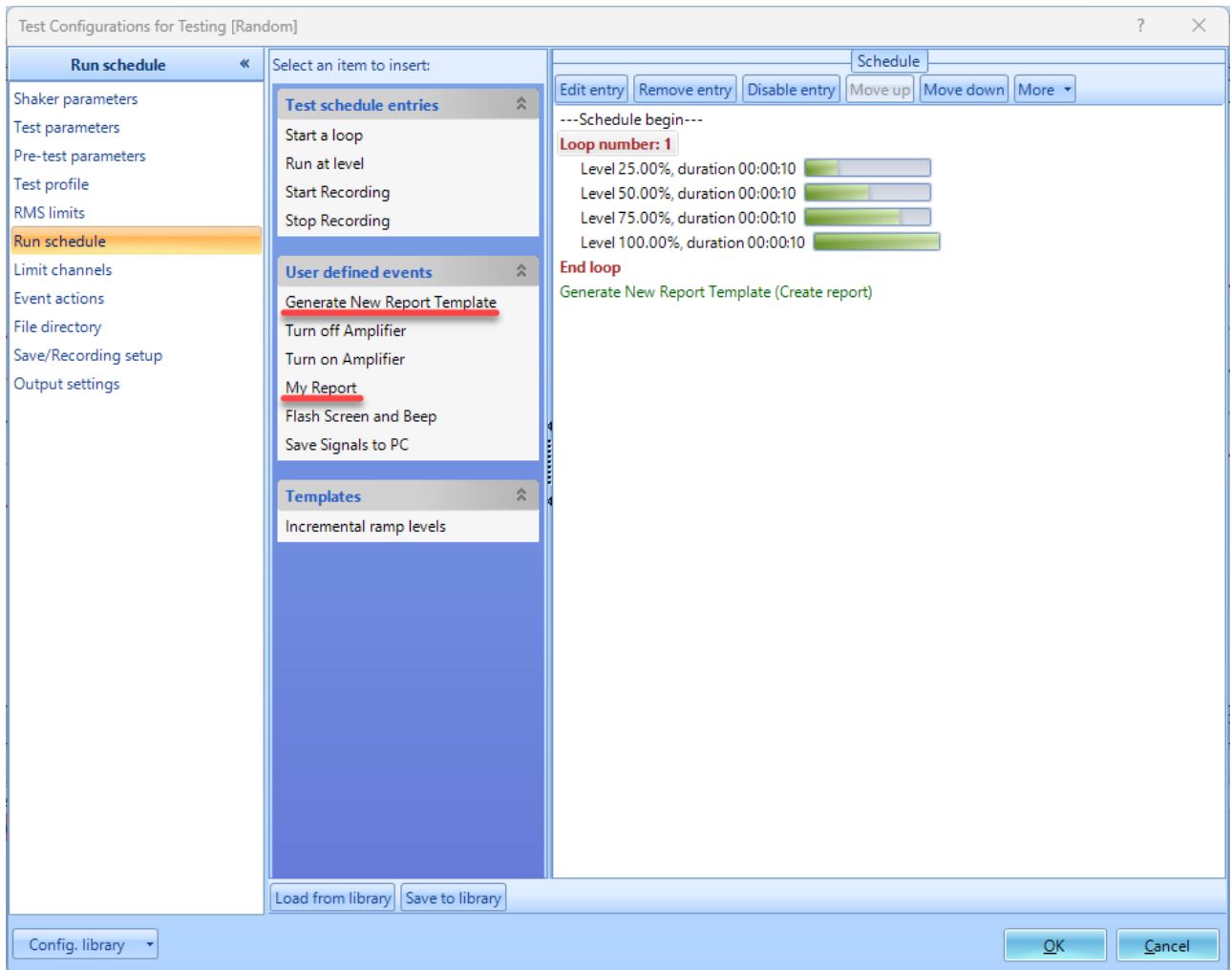
After a user event is generated, go to Run schedule > add your newly generated event

The screenshot shows the 'Test Configurations for Testing [Random]' window. On the left, a tree view lists various configuration categories, with 'Event actions' selected. The main area displays a table of event configurations:

Event name	Actions
Turn off Amplifier	Turn off Amplifier
Turn on Amplifier	Turn on Amplifier
My Report	Create report
Flash Screen and Beep	Flash Screen and Beep
Save Signals to PC	Save Results to PC
CANbus abort values	Pause Test
CANbus high abort	Pause Test
CANbus low abort	Pause Test
CANbus alarm values	None
CANbus high alarm	None
CANbus low alarm	None
Monitor Channel Lost	
Limit Channel Lost	
External Power Lost	
Control Signal Lost	
Control Channel Overload	
Output Reaches Maximum	
Sensor Overload	Flash Screen and Beep
Channel Overload	Flash Screen and Beep

An 'Event name' dialog box is open, showing the text 'Generate New Report Template' in the input field. The 'OK' button is highlighted with a red underline. Below the table, there are buttons for 'Add a user event', 'Edit event name...', 'Remove event', and 'Run log event strings'. At the bottom of the window, there are 'Load from library' and 'Save to library' buttons, and a 'Config. library' dropdown menu.





From: <https://help.go-ci.com/> - **Crystal Instruments Help**

Permanent link: <https://help.go-ci.com/vcs:report?rev=1741981219>

Last update: **2025/03/14 19:40**