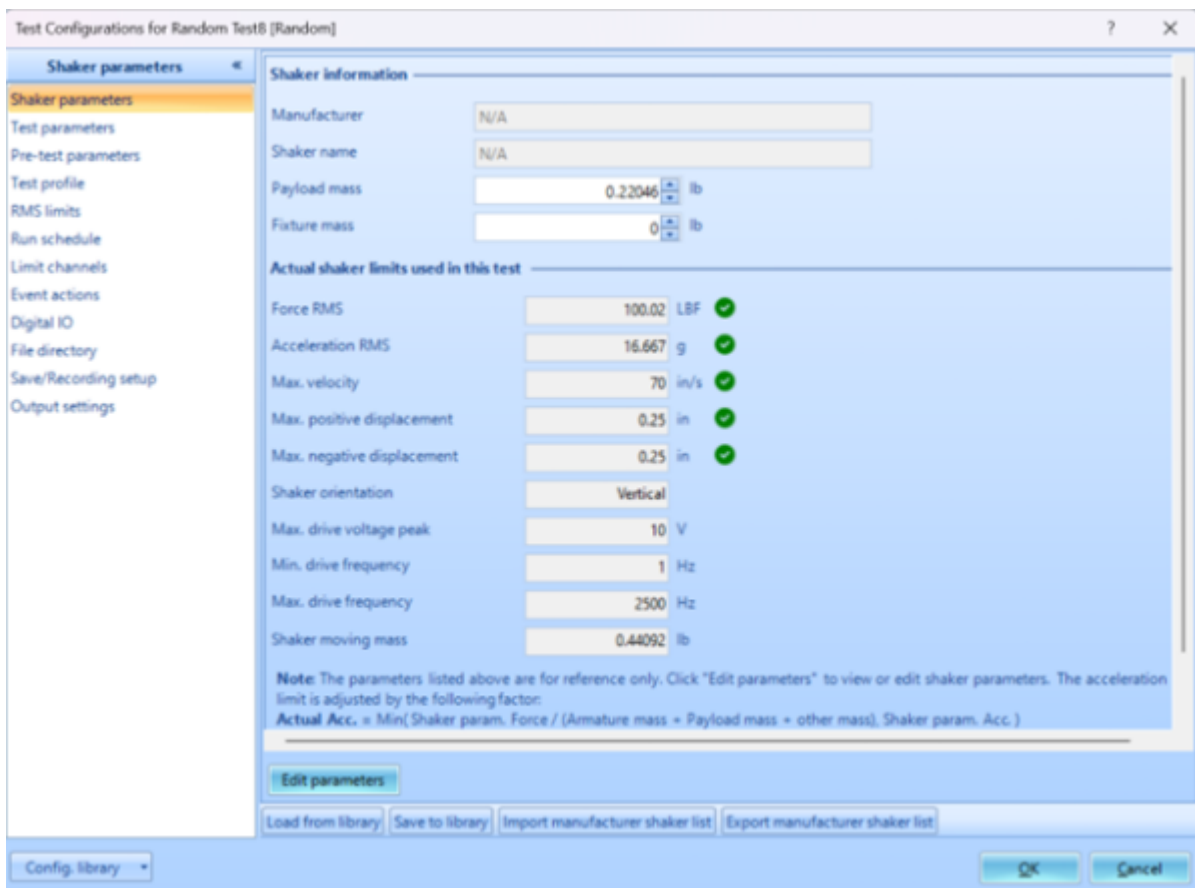


# VCS UI Config

Configuration tools are generally similar across testing types. The displayed configuration tab is from a **random test type**.

## Shaker Parameters



Edit Parameters allows you to adjust the shaker limits in acceleration, force, and displacement.

Shaker Limits

---

**Shaker details**

Manufacturer  Shaker name

---

**Force and acceleration**

Random Max. Force RMS (LBF)	<input type="text" value="100.02"/>	Random Max. Acc. RMS (g)	<input type="text" value="16.667"/>
Sine Max. Force Peak (LBF)	<input type="text" value="22059"/>	Sine Max. Acc. Peak (g)	<input type="text" value="75"/>
Shock Max. Force Peak (LBF)	<input type="text" value="100.02"/>	Shock Max. Acc. Peak (g)	<input type="text" value="50"/>

---

**Displacement**

Max. positive displacement (in)	<input type="text" value="0.25"/>	Max. negative displacement (in)	<input type="text" value="0.25"/>
---------------------------------	-----------------------------------	---------------------------------	-----------------------------------

---

**General settings**

Max. drive voltage peak (V)	<input type="text" value="10"/>	Max. velocity (in/s)	<input type="text" value="70"/>
Min. drive frequency (Hz)	<input type="text" value="1"/>	Max. drive frequency (Hz)	<input type="text" value="2500"/>

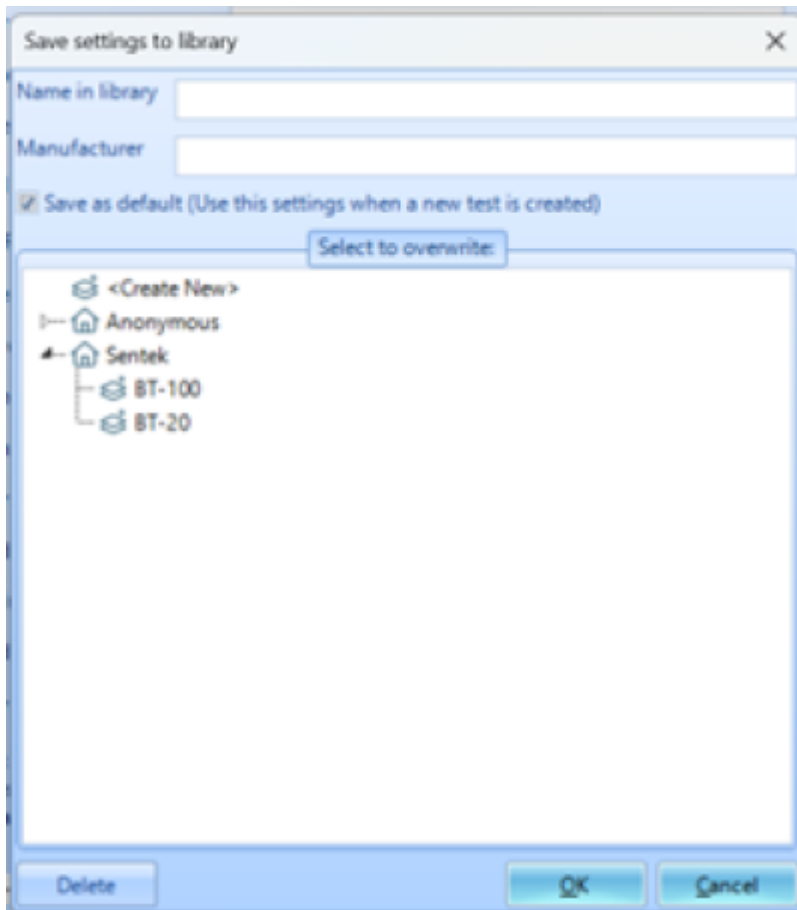
---

**Shaker moving mass**

Shaker orientation	<input type="text" value="Vertical"/>		
Armature mass (lb)	<input type="text" value="0.44092"/>	Head expander (lb)	<input type="text" value="0"/>
Slip table (lb)	<input type="text" value="0"/>	Drive bar (lb)	<input type="text" value="0"/>

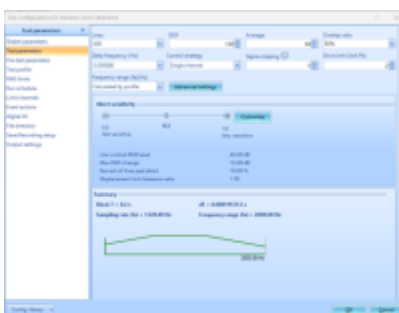
**Note:** the Payload Mass can be entered in the shaker parameters page. Actual acceleration limits used in each test will be re-adjusted by following factor:  
**Actual Acc.** = Min(Shaker param. force / (Armature mass + Payload mass + other mass), Shaker param. acc.)  
**Max. drive frequency** should not be set too high, the recommended range within 10240 Hz.

Limits can typically be found through OEM site or product specification sheet. The acceleration limits may not be provided but can be calculated automatically in this interface. The Save to library option will allow for the shaker to be saved for future use & can be set to be the default test settings.



If the shaker in use is not set as default but has already been used in testing, shaker parameters can be imported through the Load from library option located on the bottom ribbon of the page. List of Shaker parameters from OEM can be imported to fill out library.

**Test Parameters** Testing parameters shown in figure display a random signal test. The test parameters will vary by test type. All test types conducting an FFT analysis will include options for blocking and windowing.



Lines selection box will allow you to choose the spectral lines within a given block. **DOF**, degrees of freedom, is the number of independent FFT contributing to a statistical result in a PSD diagram. Increasing DOF gives higher statistical confidence in an accurate result but increases computation time. Used for shaker control.

**Average** is the number of blocks of data that are used to compute a PSD. Averaging can include different forms of weighting and often has overlapping and windowing which contribute to the data not being independent from each other.

**Overlap ratio** describes how much data from the  $n$ th block will be contained in the  $n+1$  block. At 50%, recommended for Hanning window, half of the data in the  $n+1$  block will be new and half will be

left over from the previous block.

**Delta frequency (Hz)** also known as frequency resolution is the spacing between spectral lines and is often referred to as FFT bins. It is the amount of definition able to be seen in an APS spectrum.

**Control Strategy;** There are four options for this parameter. Single channel control allows the shaker to be controlled by a single monitor feeding into its control loop. Weighted averages the average of all control monitors and sets the control to be the mean of the inputs. Maximum takes the highest control output at each spectral line and sets the control output based on these inputs. It is used when care is taken not to overexcite the UUT. Minimum is the reverse and is used when the UUT needs to make sure to meet a minimum excitement criterion.

**Sigma clipping** gives control over data variance. It is a measure of outliers which should be pruned from the control data. If the random input fails to properly follow a gaussian distribution and has spikes of higher energy, those spikes will be excluded from the control drive; this does not prune resonance responses. Increasing value of sigma clipping will give more variance in data and result in less pruning of data. Can be left at 5, industry standard, for most applications.

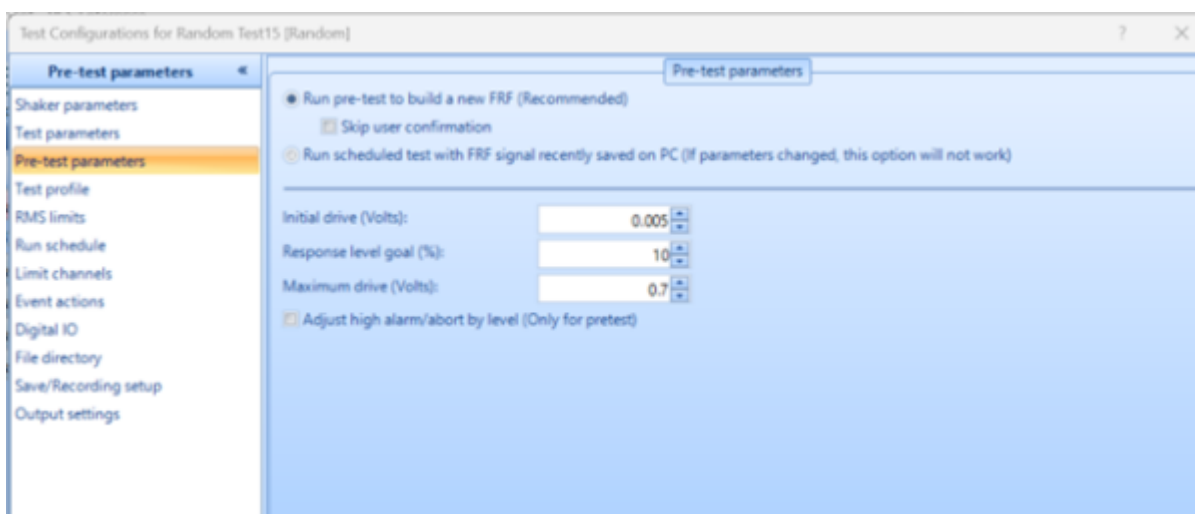
**Drive limit (volt Pk)** sets an abort criterion at the specified output level.

**Frequency range** defines range of FFT analysis measurement. Example would be from 2 Hz to 3000 Hz

**Advanced Settings** include options for test limiting and notching, ramp up rates, spectrum resolution and performance optimization. Additional options are available if you are using an amplifier.<sup>21</sup>

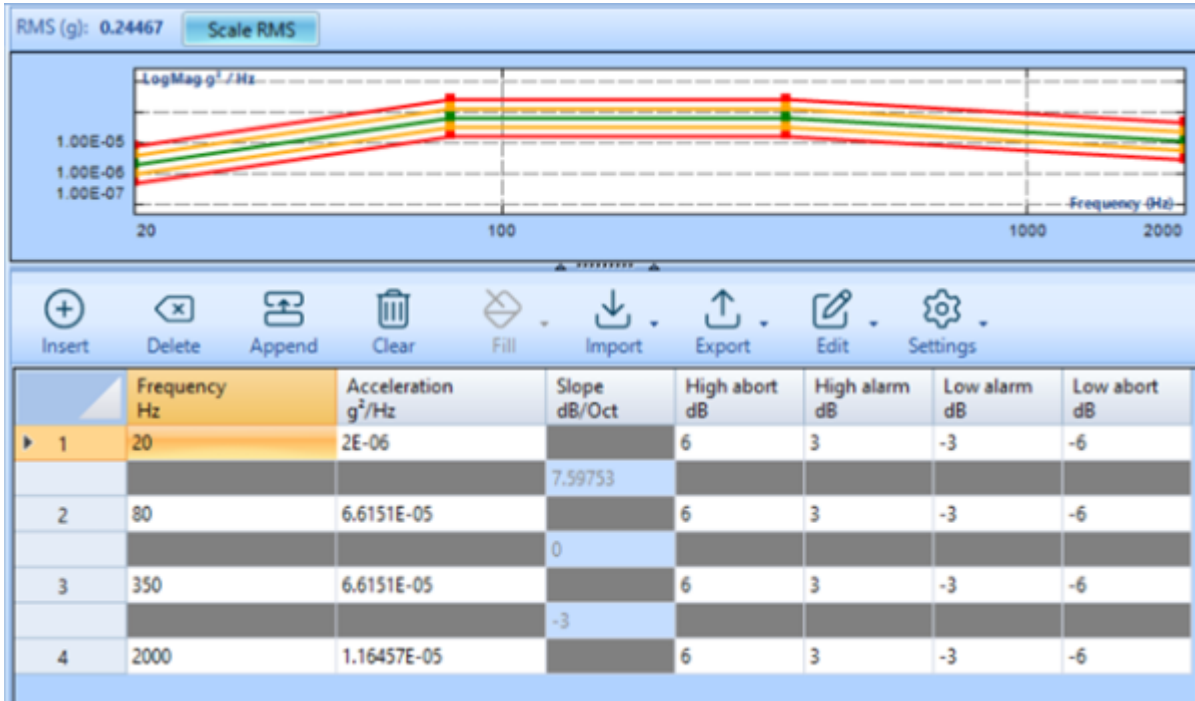
**Abort sensitivity** can be customized or scaled so that the test will either allow for testing to continue while being pushed into abort range territory for higher or lower ranges.

## Pre-Test Parameters

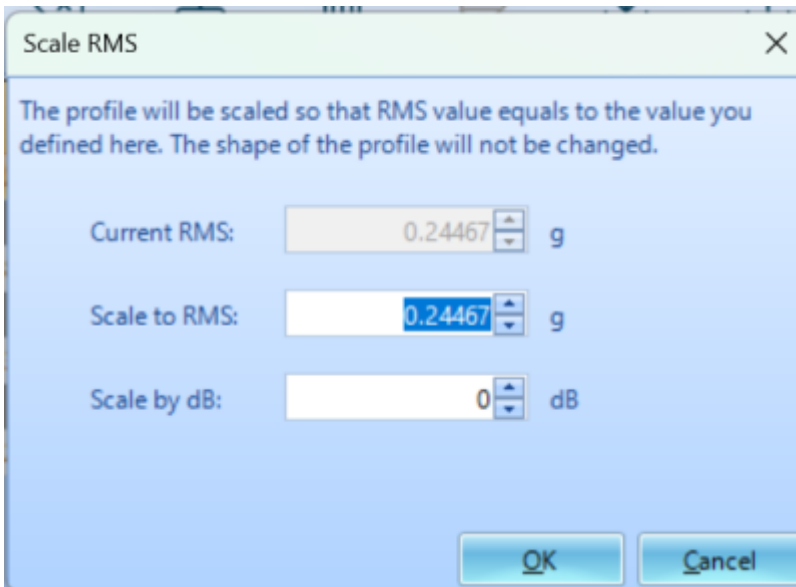


Before testing begins it is important to run a check to build a new FRF, or use previous FRF, based on a low input drive. The test will also check to make sure that the test drive will not exceed shaker parameters. Pretest drive and response level of ultimate testing excitation are adjustable to user preference.

## Test Profile



Test profiles for random tests will only display a broadband signal covering the defined frequency range. Test profile can be set to vary across frequency spectrum by magnitude and abort criterion. Acceleration output magnitude is adjustable by Scale RMS option above the control profile display.



Output magnitude can be adjusted by dB or acceleration units.

### RMS limits

**Warning:** The expected values are estimated. The actual shaker demand values may be significantly higher. Narrowband RMS and Overall RMS includes narrowbands and sine tones that will be turned on in schedule. Does not include all narrowbands and sine tones profiles.

Check AVD against shaker limits

Physical quantity	Random profile RMS	Profile expected values	Shaker limits	Expected/Shaker limits
Acceleration (g)	0.2447	0.734 (Peak)	68.04 (Peak)	1.1%
Velocity (in/s)	0.0675	0.2025 (Peak)	59 (Peak)	0.3%
Displacement (in)	0.0001684	0.001011 (Pk-Pk)	0.2 (Pk-Pk)	0.5%
Force (LBF)	0.1445	0.4334 (Peak)	15 (RMS)	1.0%

Control RMS limits during test

- Calculate based on the table
- Enter manually (g)
- Enter manually (dB)
- Enter manually (%)

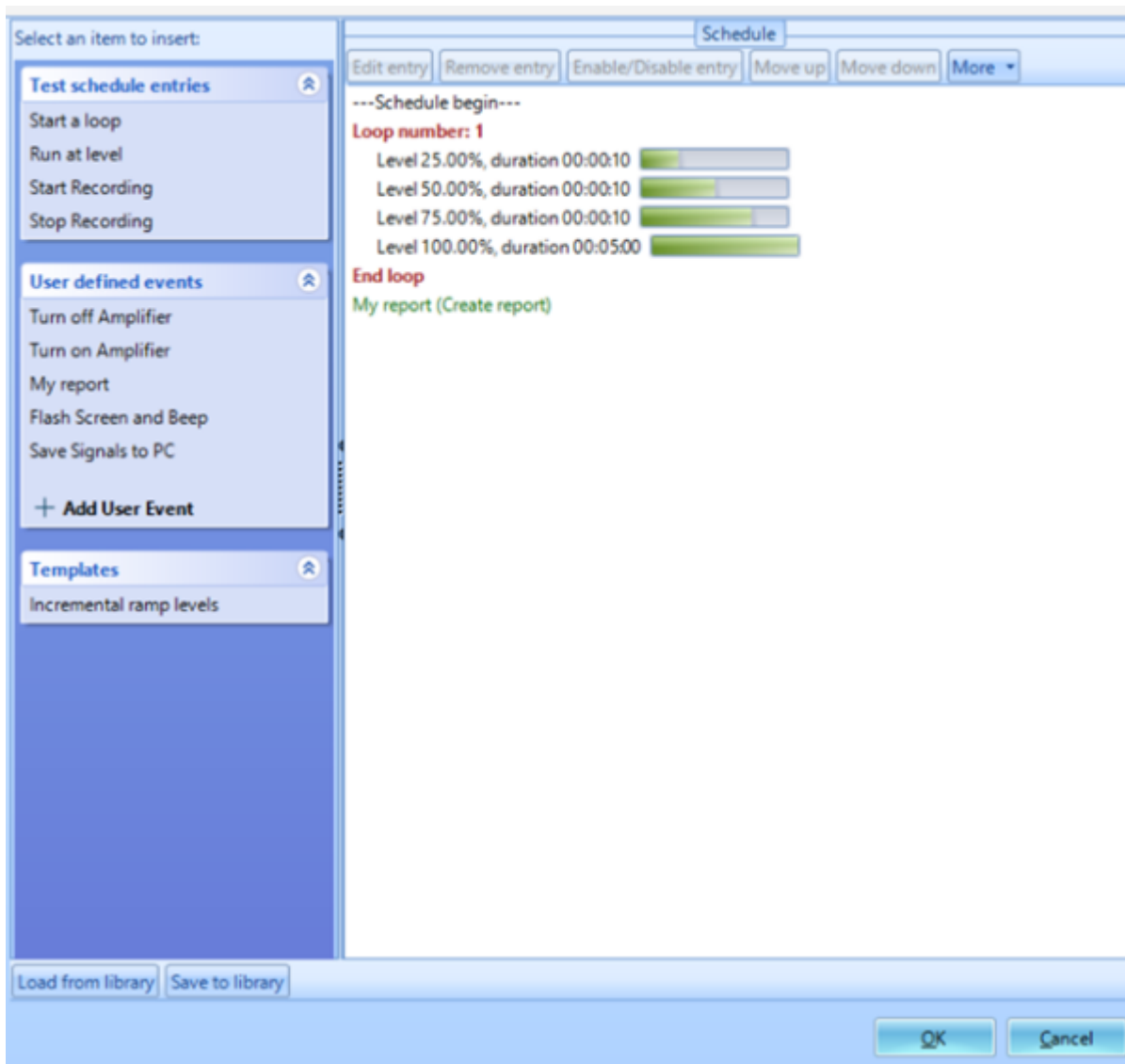
	(g)	(dB)	(%)
High abort	0.400	6.00	199.5
High alarm	0.340	3.00	141.3
Profile RMS	0.2447		
Low alarm	0.175	-3.00	70.8
Low abort	0.125	-6.00	50.1

OK Cancel

This page displays calculated values based on the test profile and abort limits previously set. Values can be scaled by profile RMS, same as Scale RMS, or by manually adjusting values of alarm and abort.

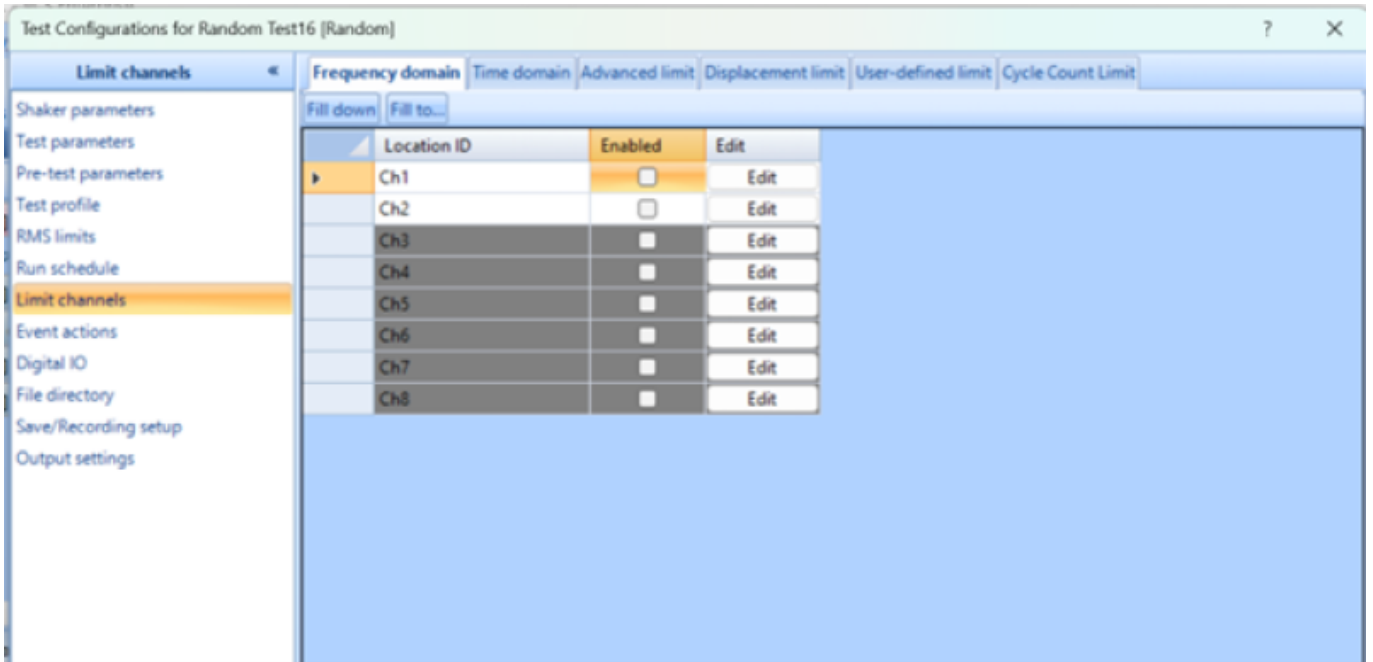
## Run Schedule

Run schedule allows the user to define the testing process and resulting actions after a test is completed. Run schedule creation follows basic logic structuring and gives users options for setting the drive level, recording times, amplifier usage, report generation, loop creation and user defined events.

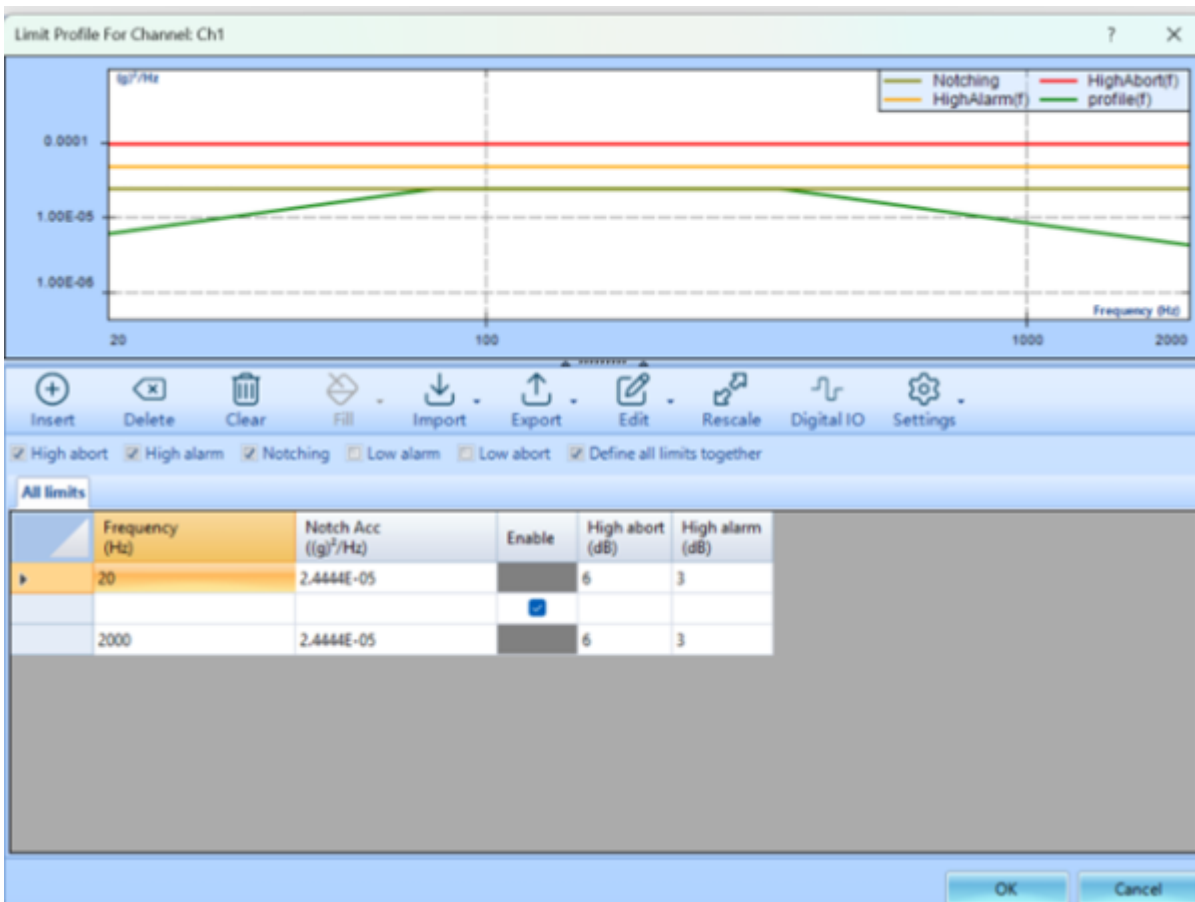


To create run schedule you simply click on the desired entry or event on the item to insert window. Once the item is clicked it will either be inserted into schedule or parameters pop up window will display and allow you to make adjustments. Once inserted into schedule it can be modified via the ribbon above the schedule. The placement of the entry can also be adjusted by dragging it into the correct placement.

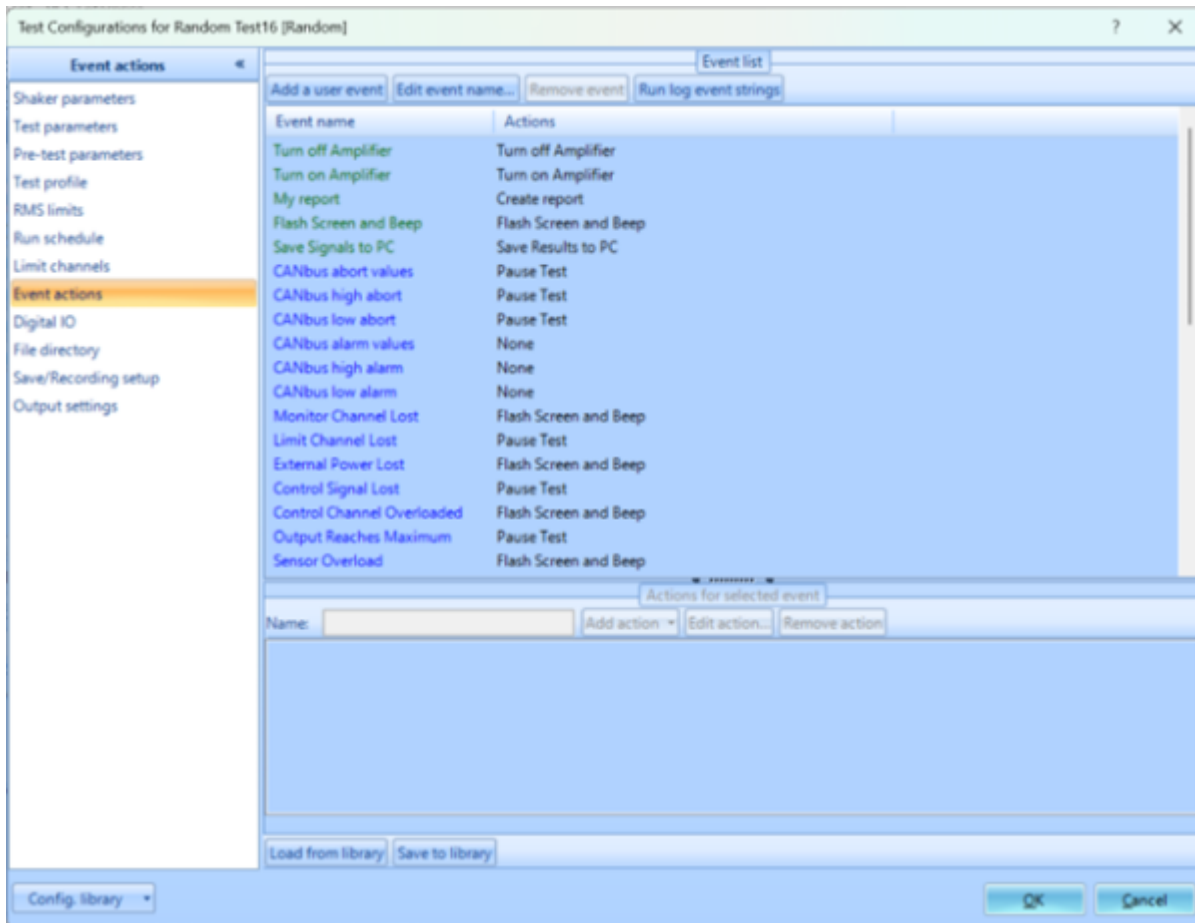
## Limit channels



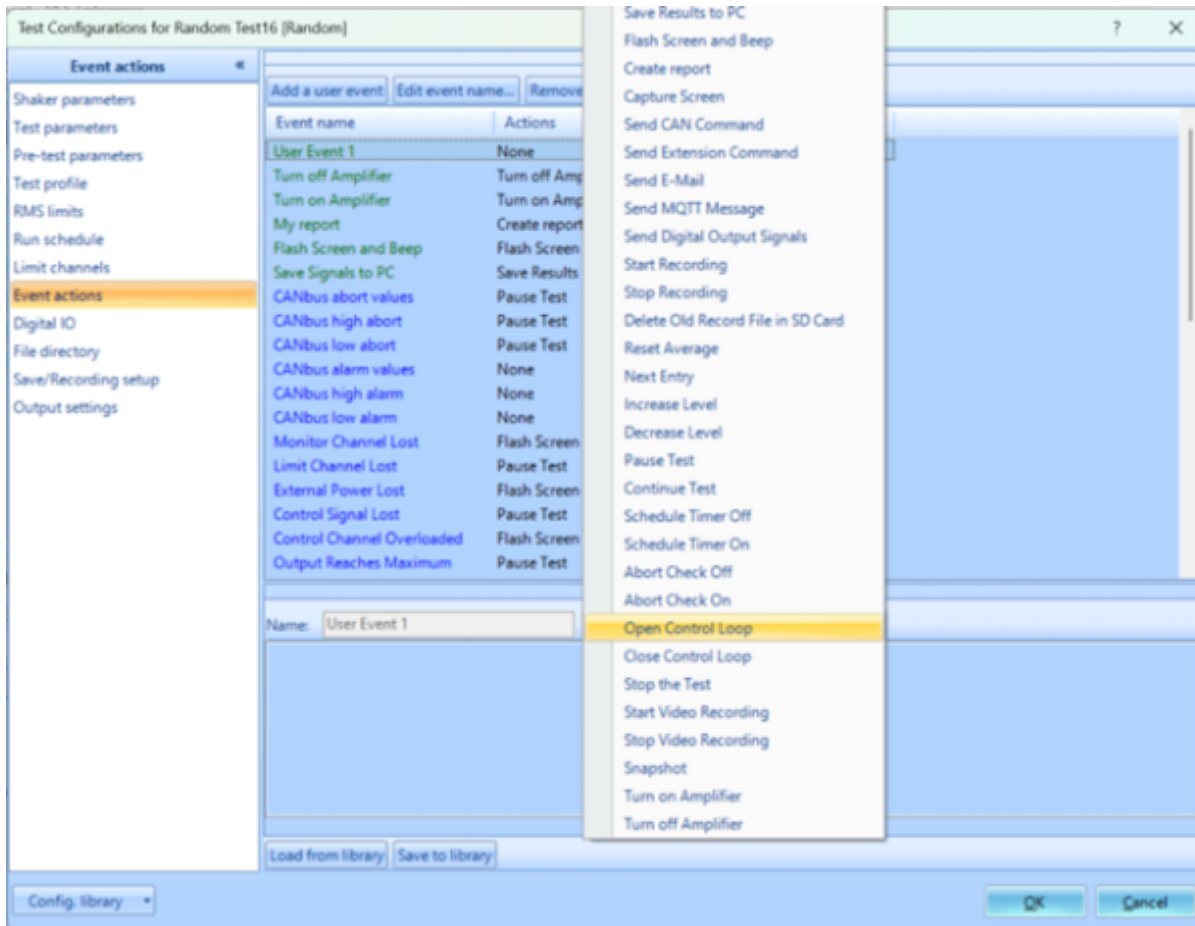
Limit channels allow for test controls to be placed at frequencies to adjust the abort test and alarm profiles. They are also responsible for notching procedures. Notching reduces the profile input around specified frequencies so that it can avoid resonance excitation which drives the response above abort limits.



### Event Actions



Event actions panel allows the user to define testing run schedule events. This can be used to run test procedures such as increase or decrease level, next entry, pause test and other similar actions. Events can also automate analysis process by generating reports, screen capture, and sending emails. User events are a powerful and diverse tool but are not required for testing purposes and are used only when needed for automation to meet testing requirements set by user.



## Digital IO

Digital Input/Output tab gives the user the options to send output signal before running and Digital Output when schedule ends or is aborted.

## File Directory

Allows you to control where data is stored and naming conventions of files.

## Save/Recording Setup

User can define when data should be saved to system.

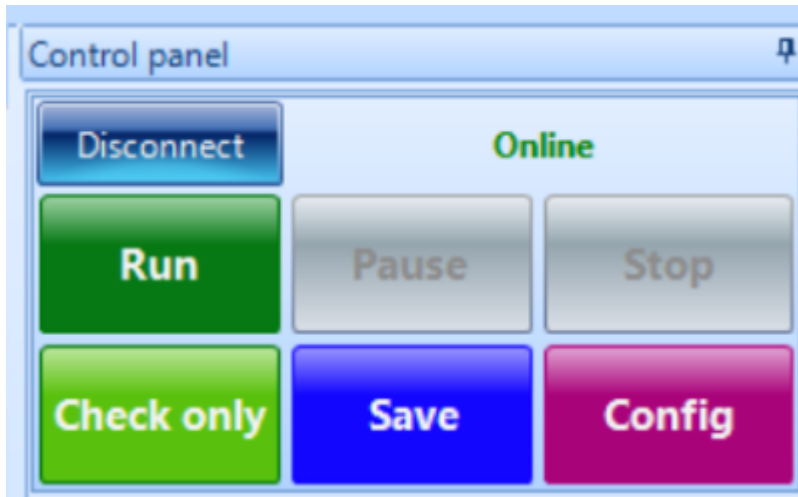
## Output Settings

Output settings give user control over which output channel should control shakers. Additionally, it can define second output channel and relation to primary drive.

# Control Panel

Control Panel allows users to conduct testing and acts as a shortcut to other vital testing parameter windows.

## Connect/Disconnect



Will attempt to connect to selected hardware device. Will bring control panel Online.

**Run** Begins Run process. Hardware Check List will appear.

Please confirm the following critical parameters for this test:

**Profile**

Level 100.00%, duration 00:05:00

2000.00 Hz

**Schedule test**

Item	Parameter
Shaker name	Sentek BT-100
Payload mass	0.22 lb
Target RMS	0.150 g
Maximum level	100%
Total test duration	00:05:30
Drive limit	5.00 V
Sigma clipping	5.00

**Pre-test**

Item	Parameter
Pre-test mode	Run pre-test with confirmation
Initial drive	0.005 V
Response level goal	10%
Maximum drive	0.7 V

**Input channels**

Location ID	Parameter
Ch1 (C)	101.1000 (mV/g), IEPE
Ch2	100.0000 (mV/g), IEPE

**User notes**

Field label	Content
DUT	Input content
Serial number	Input content
Test protocol	Input content

**Run description**

Untitled Test Note

Test directory: C:\Users\ReidGarcelon\Documents\EDM\_VCS\Spider\_VCS\Random Test16 Choose

Create a new folder every run  Use the same folder for every run

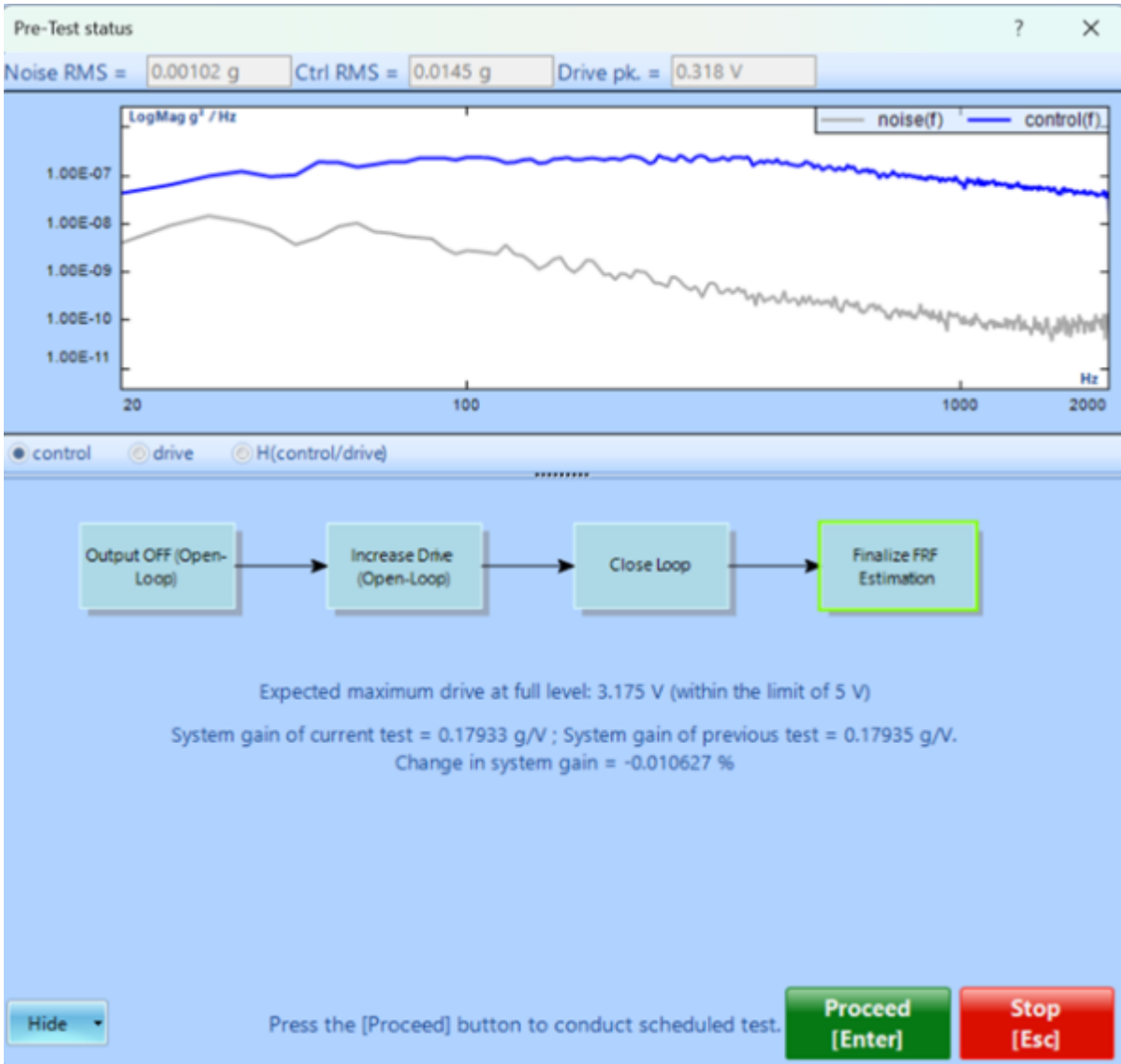
Run folder name: Run  Sequence number starts from: 5

Show this window and wait for user confirmation.

**Press OK to continue**

OK Cancel

Pre-test check process will begin once you left-click OK. Pre-test confirmation page displays testing information and gives directory location final choice.



If the check is successful there will be no warnings displayed and you may conclude Pre-test confirmation with Proceed.

**Pause** Pause option will become active once the test run schedule begins. It behaves as described and stops excitation. The test will not end by clicking pause.

**Stop** This command will end the testing process.

**Save** This will save the frequency domain data from the last time block created. The last block of time stream data which was processed will save be saved.

### Config

#### VCS UI Config

Configuration window can be selected on the ribbon as well as through the control panel Magenta Config button.

Configuration tools are generally similar across testing types, but there will be unique parameters for each testing type.

From:

<https://help.go-ci.com/> - **Crystal Instruments Help**

Permanent link:

<https://help.go-ci.com/vcs:ui-overview:config?rev=1771445955>

Last update: **2026/02/18 20:19**