

VCS UI Hardware Menu

Hardware configuration within VCS begins with Spider connection.

Then continues with the test type selection which matches physical model.

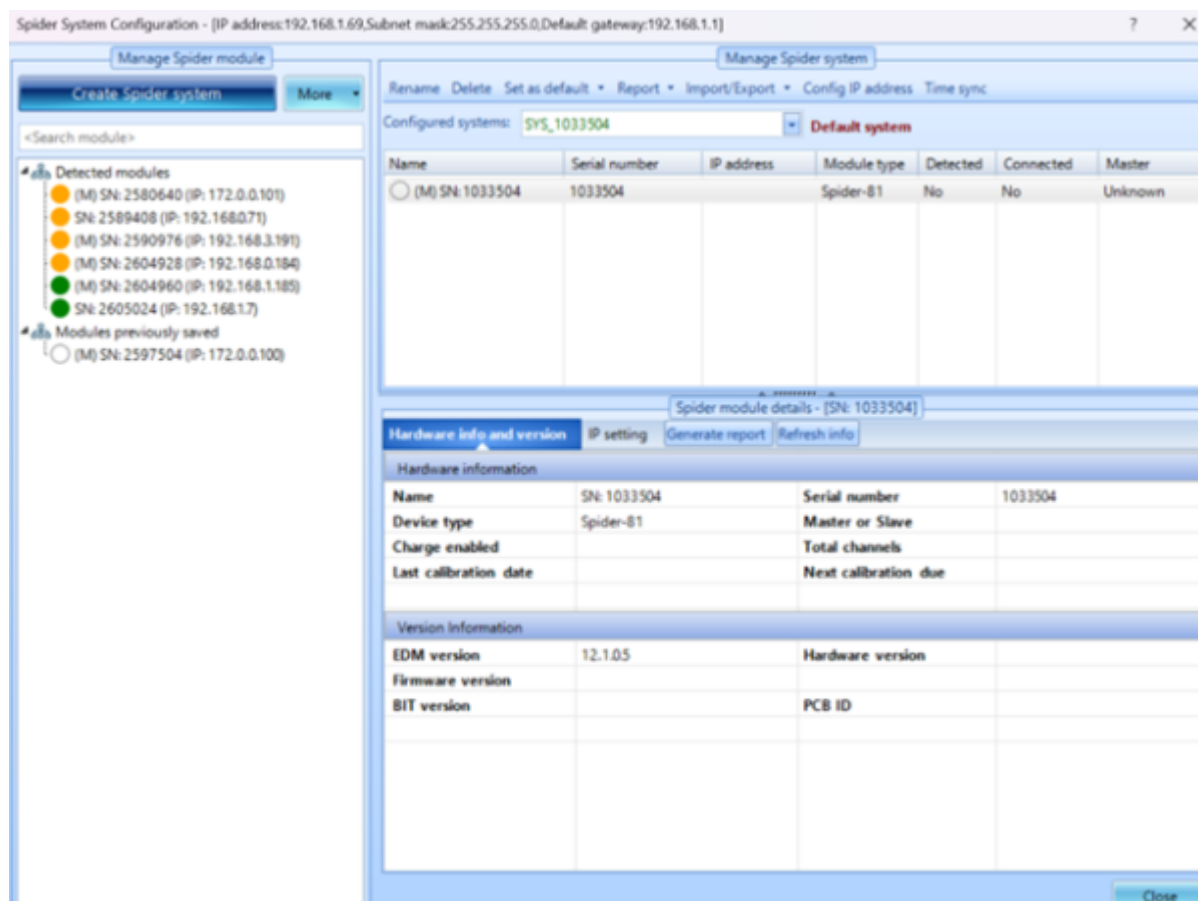
Hardware setup continues with Shaker parameters within [VCS UI Config](#)

Inputs and signal control follow from the Top Toolbar to match sensor setup.

Ribbon -> Tools

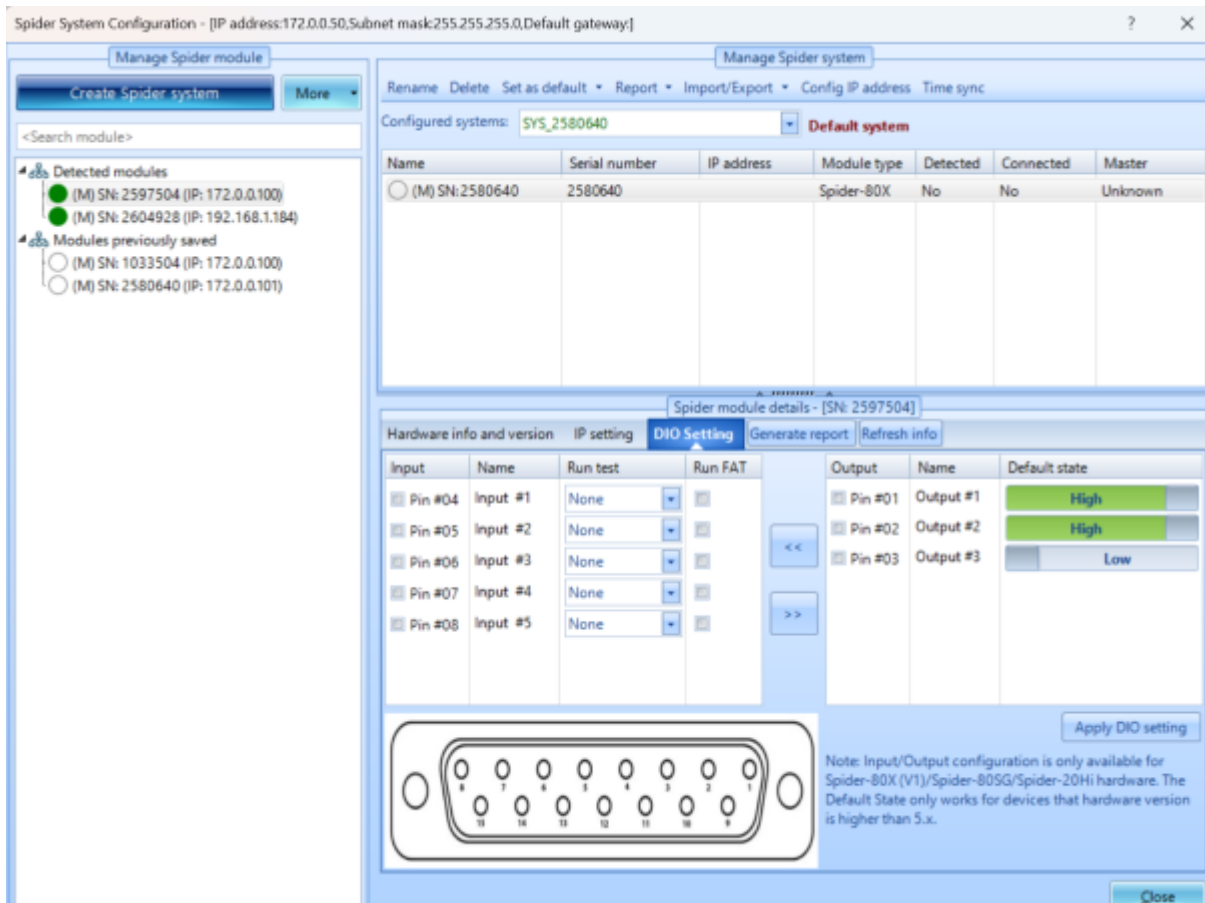
Spider Configuration: Displays detected modules as well as currently selected spider's information regarding model type serial number and EDM version. Spider configuration is available when you are not connected to a spider currently.

Options include renaming spider system, setting as default system, importing a new system and IP address configuration.



DIO Digital input & output allows for customization of input and output channels

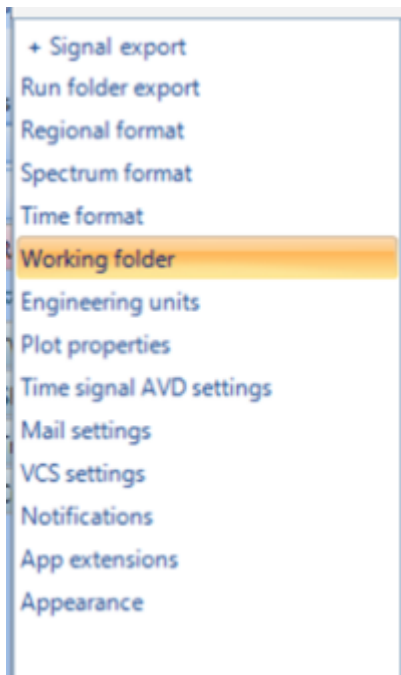
A spider must be selected from the modules page to access DIO



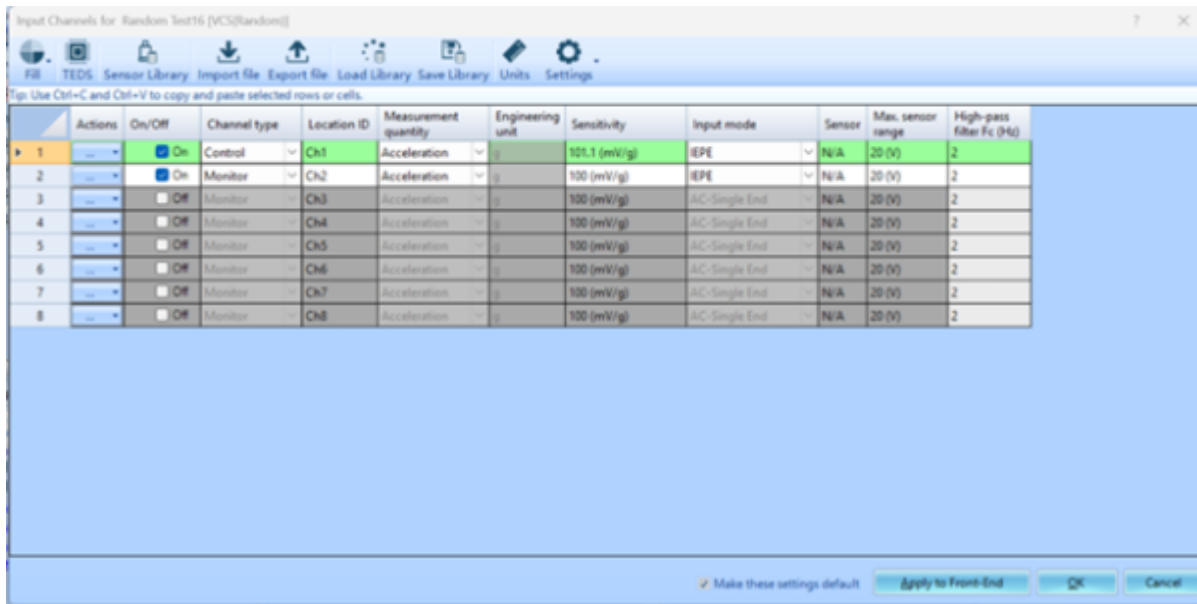
Spider Date & Time Settings: Set Date & Time to be synchronized with PC or to custom setup.

Global Settings: Allows customization of interface appearance, units, formatting, notifications and plot properties.

Working Folder: Sets the file browser/PC location of recording and saves data, as well as generated reports.



Top Toolbar -> Inputs



Input Channels for Test window allows you to define active channels as well as control and monitor channels. You can set the Name, Measurement, EU, Sensitivity and Input mode for the type of sensor used in test. High-pass and max range voltage range can also be set.

Settings

Shortcut to Global settings as described in Tools → Global settings.

Global settings include engineering units,

From:
<https://help.go-ci.com/> - **Crystal Instruments Help**

Permanent link:
<https://help.go-ci.com/vcs:ui-overview:hardware-menu?rev=1771448167>

Last update: **2026/02/18 20:56**