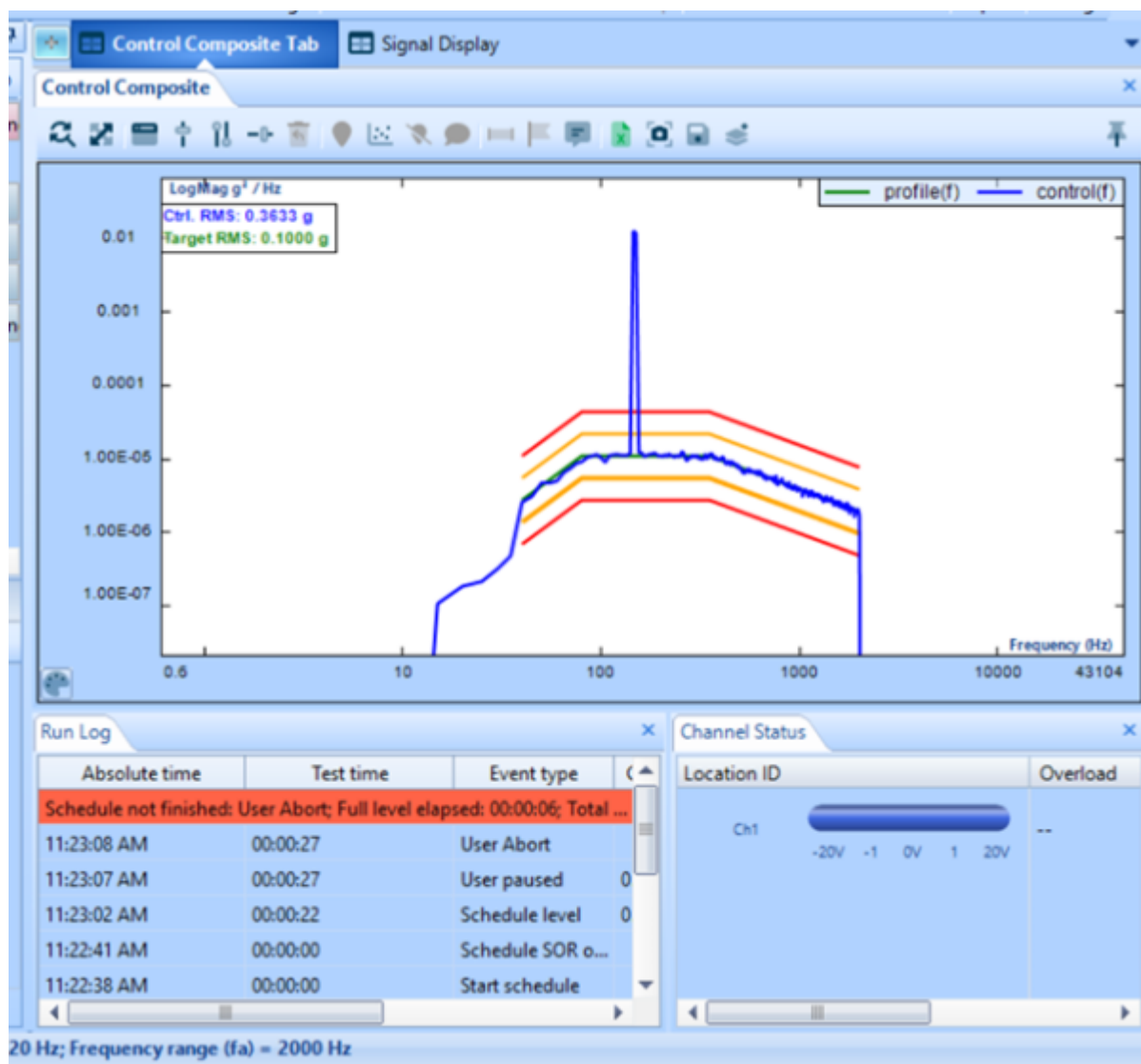


# VCS UI Signals Display

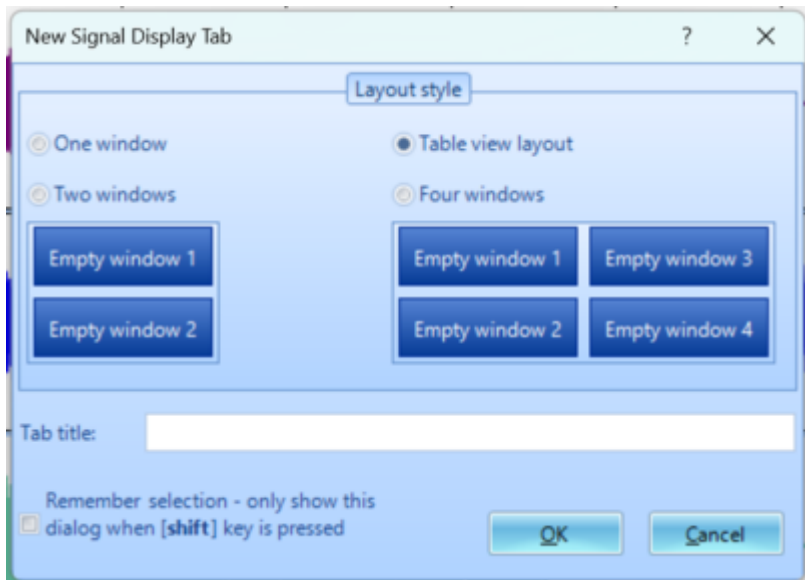
## Signal Display Window



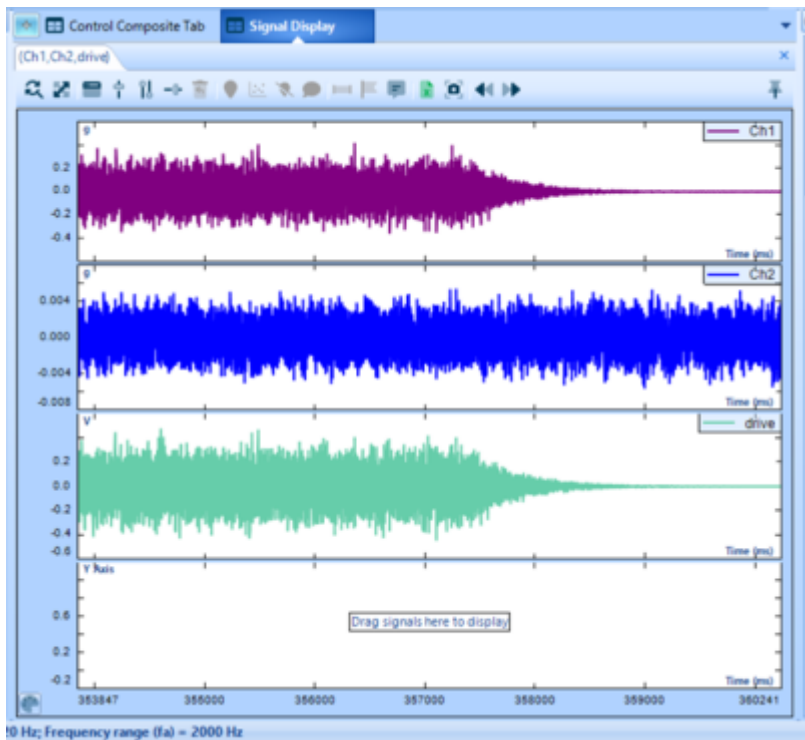
Display window is used to show both time stream data and frequency domain data. Windows can be configured to meet requirements of user for general ease of use or for aesthetic purposes. The display window has capabilities to process data and show complex results such as meeting vibration criterion and damping ratios. Typically, the display window is also where user analysis occurs within EDM software.

### Window Navigation

Much like a web browser the display window tabs can be added and closed via the + and - buttons. When opening a new tab, you will be prompted by the following window to configure it.

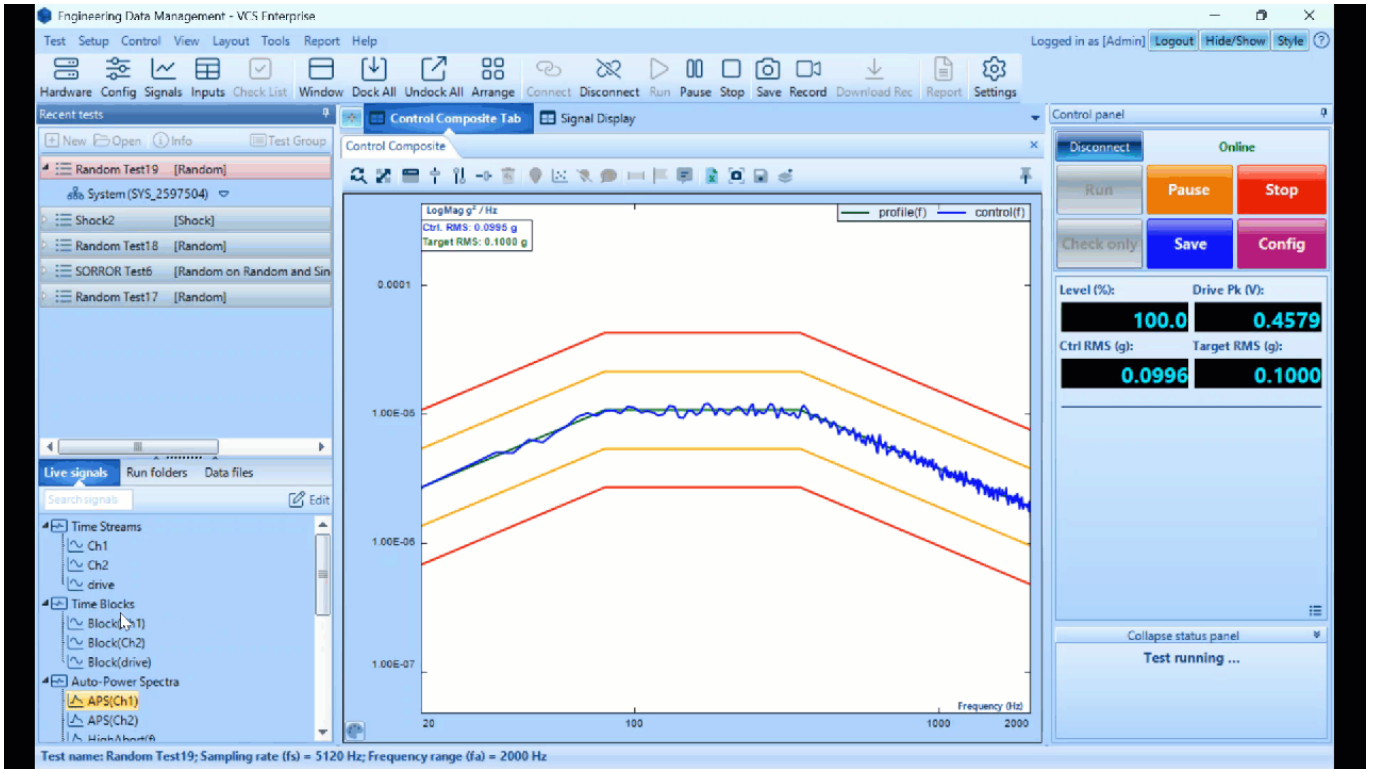


Window and Tab title will display after clicking OK. Switching between tabs works the same as a web browser.

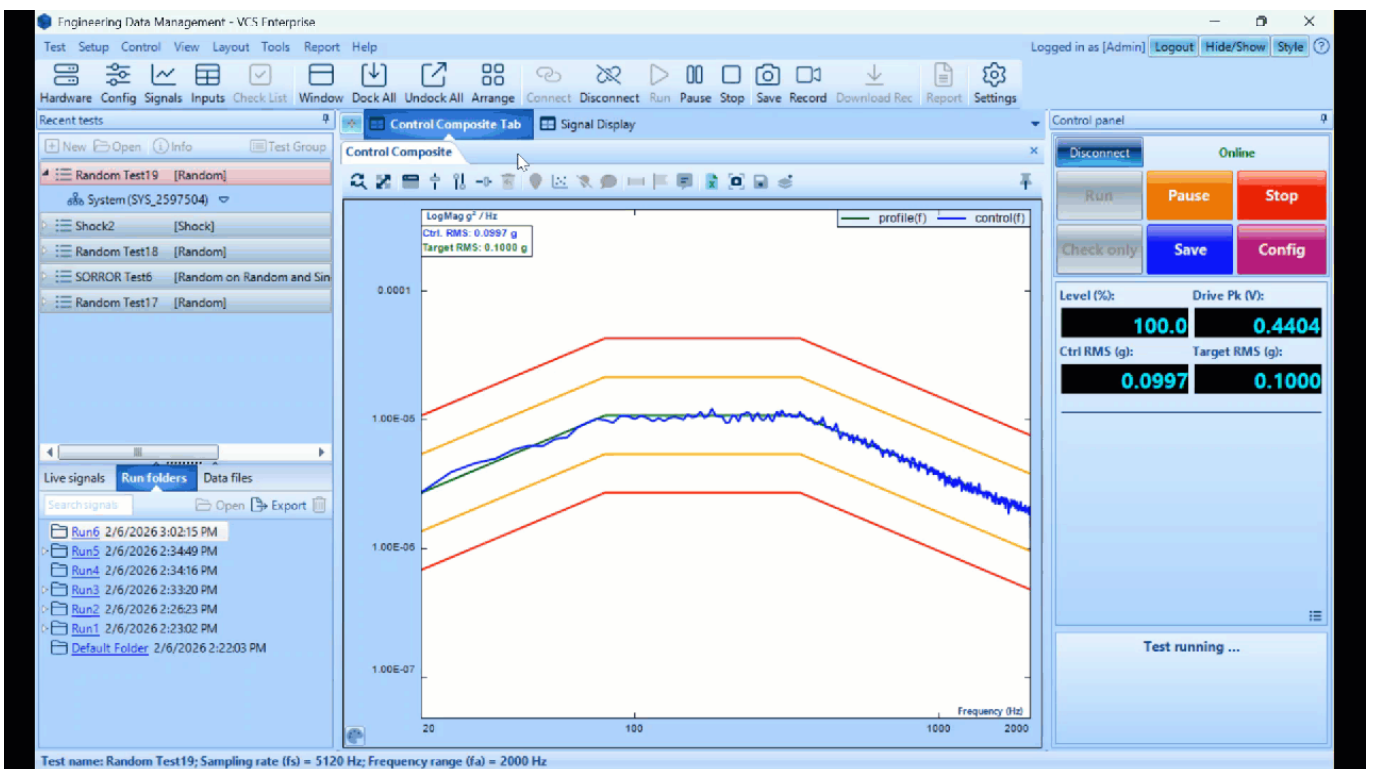


### Signal Display

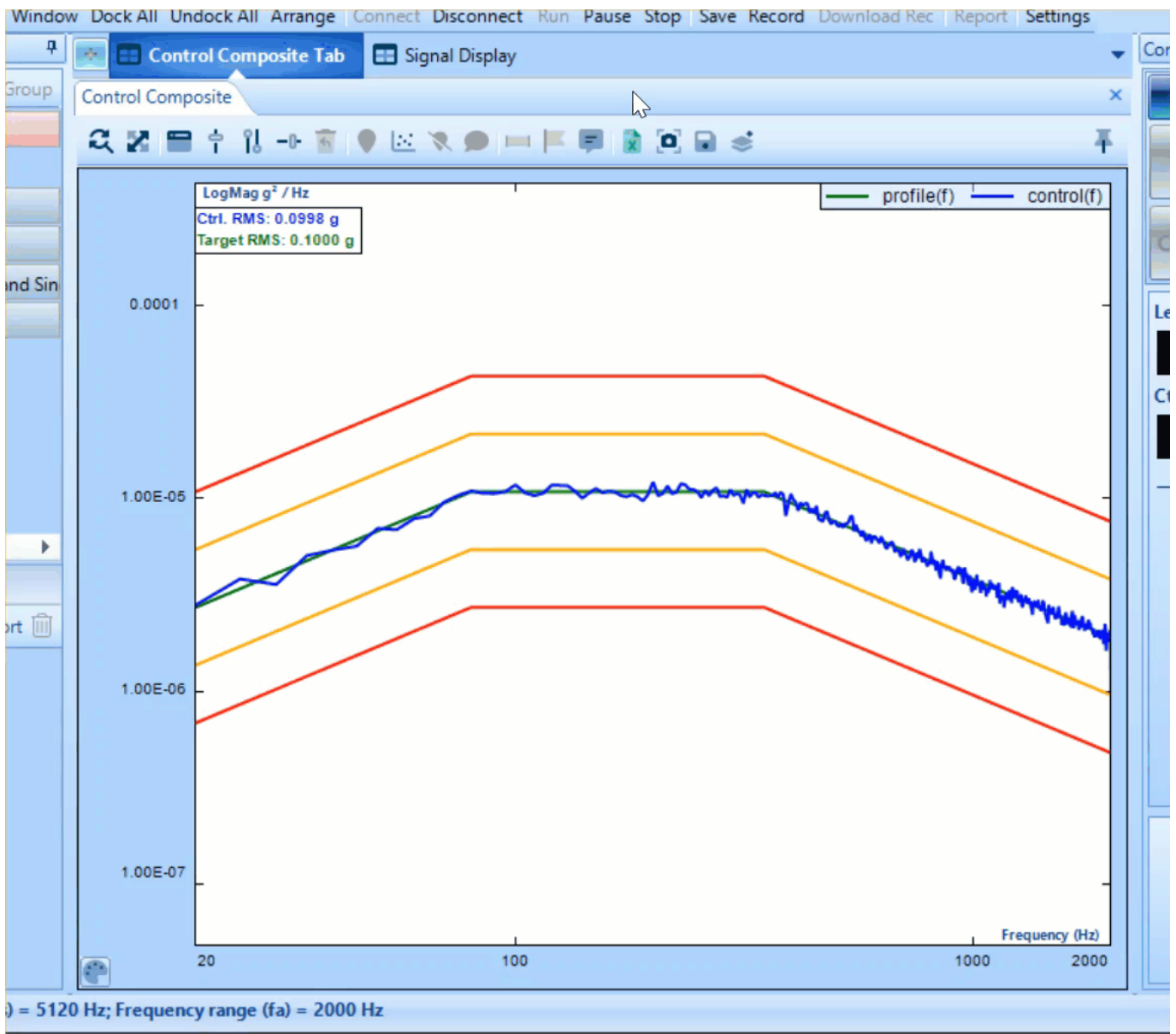
Live signals are shown in the bottom left panel of the interface. They can be opened and then dragged into the desired location on the screen. The display will adjust by having the new graph split with an already existing plot and will be in the selected relative position to the existing graph.



Alternatively, signals can be dragged into an already open plot. If the existing graph is empty the signal will be displayed in the plot. If you drag a signal into a plot with an existing signal or window with already existing plots filled with a signal, the signal will be overlaid with the existing signal if they share the same domain. If they do not share the same domain, the new signal will be rejected. Shown below are signals being dragged into empty windows and then signals dragged into empty plots but within the same window which already has a defined domain.

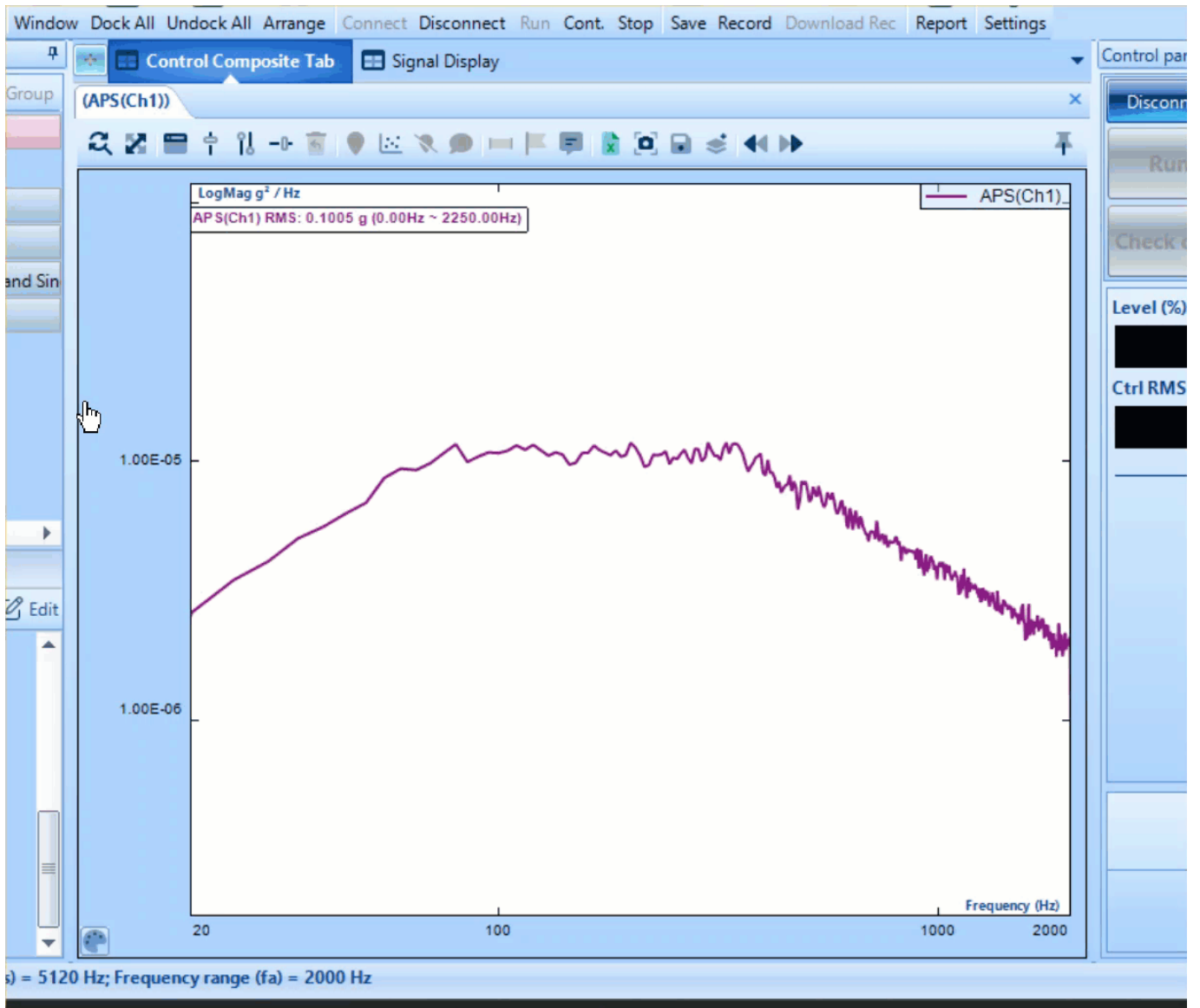


Windows within tabs can also be created by right clicking the window ribbon and making desired selection. This can result in numerical display of control magnitude, table of specified rows and columns, run log windows and more.

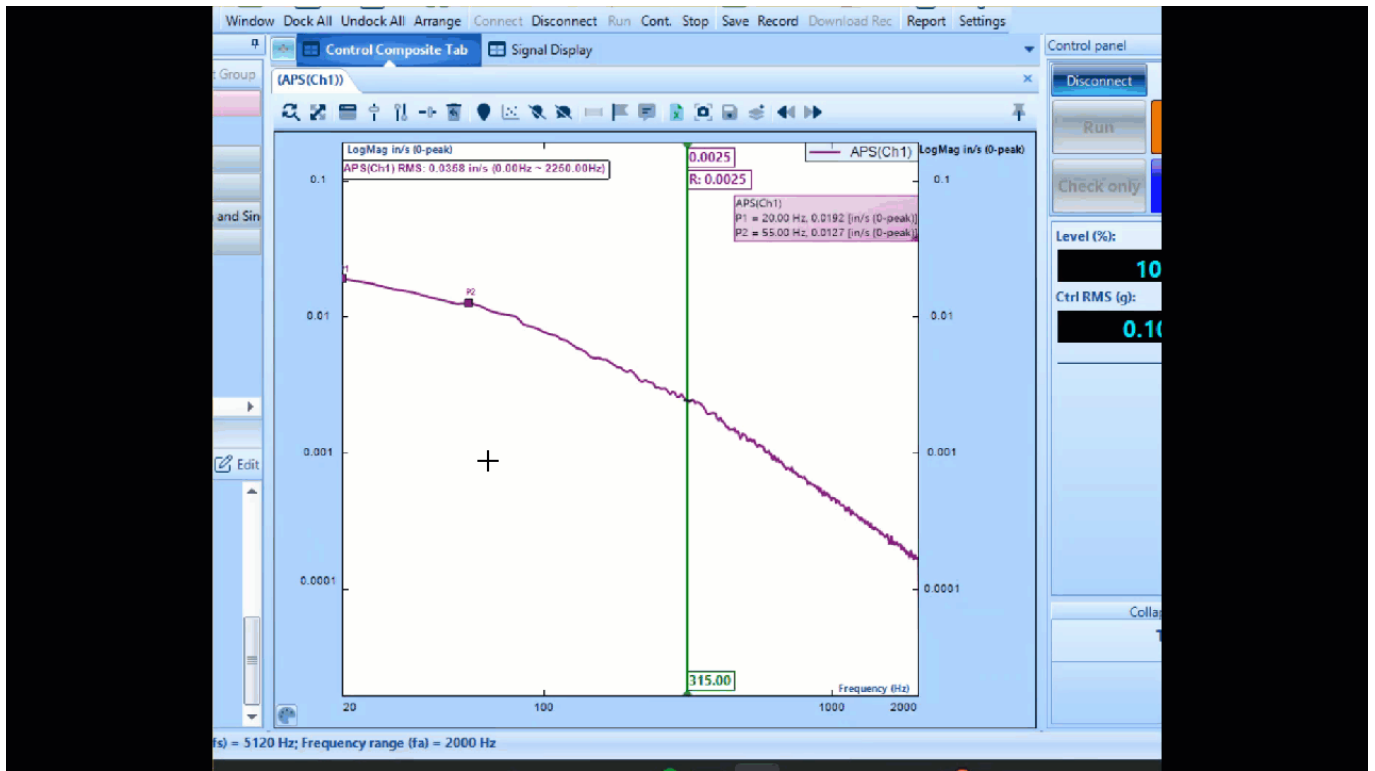


### Plot Properties

Once signal is displayed in plot it can be right clicked to adjust properties of the plot. Not only can display be adjusted: units can be adjusted, signal can be integrated, information can be highlighted, relevant testing limits can be displayed and more.



Plot properties can also be adjusted by double clicking on the axes. This will open plot settings option form right click menu directly to the axis selected.



From:  
<https://help.go-ci.com/> - **Crystal Instruments Help**

Permanent link:  
<https://help.go-ci.com/vcs:ui-overview:signal-display?rev=1771015642>

Last update: **2026/02/13 20:47**