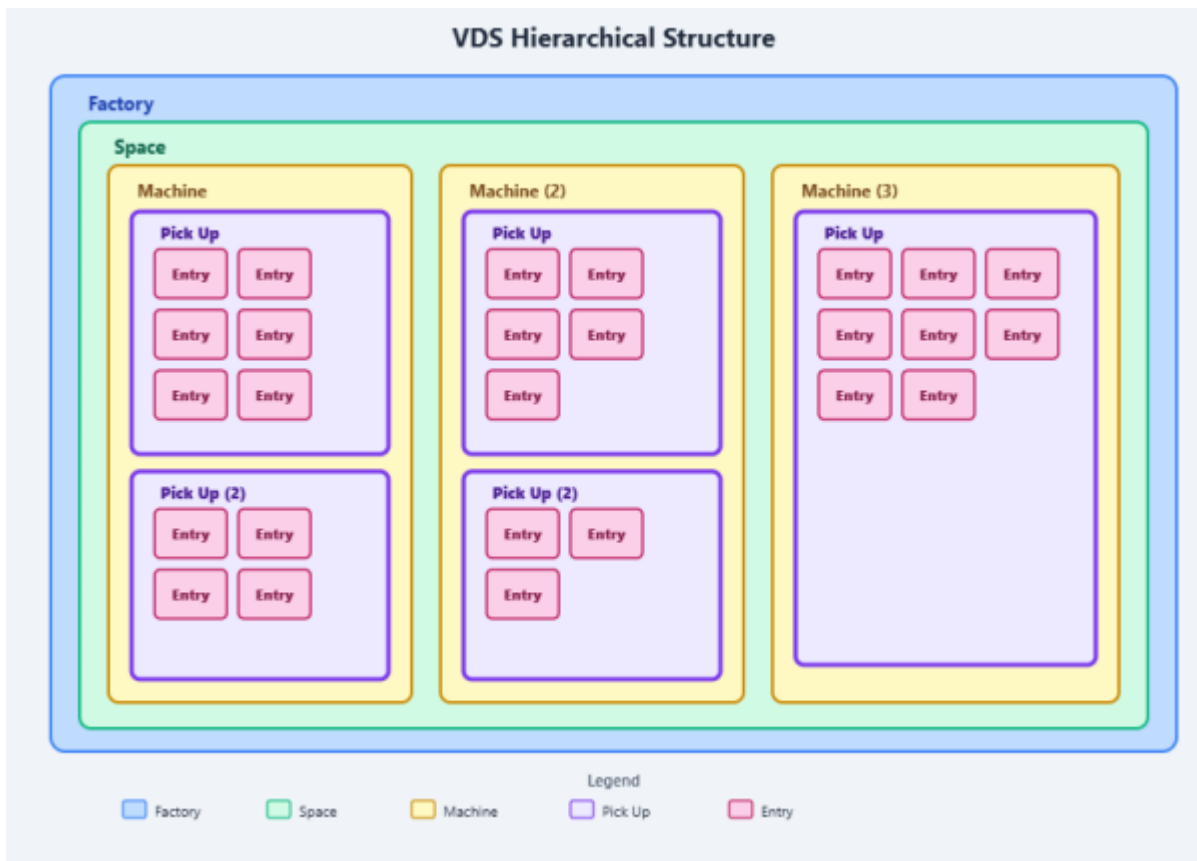


VDS Pickups



Pick Ups are found under the machine class in the hierarchical structure of a Factory

Pick Up Creation

Pickup Points can be created by importing them while attached to a machine class or by manually adding them under setup → New point; to create a point through the setup panel you must be selecting a machine pickup or entry in the asset browser. Pickups can also be created by selecting a machine class or point in the asset browser and right clicking in the asset browser.

Machine ✕

Name:

Short Name:

Description:

S/N:

Space:

Location:

No Machine Class

Select a Machine Group:

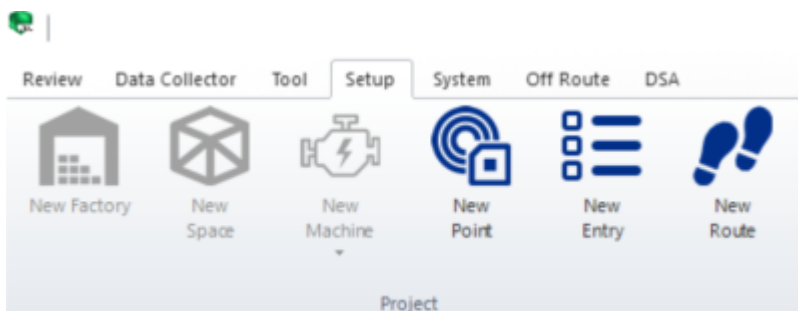
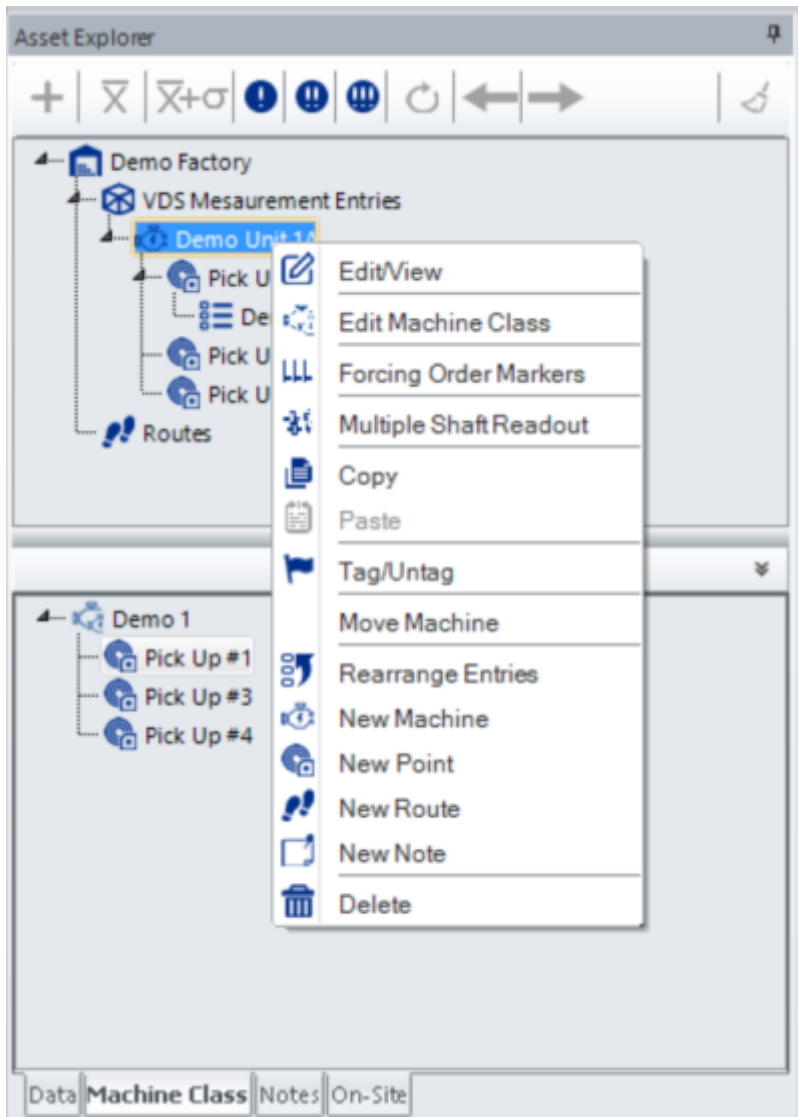
Machine Class | Data Collector | Time and Schedule | Notes | Test Condition

Select a Machine Class:

Points | Alias | Speed

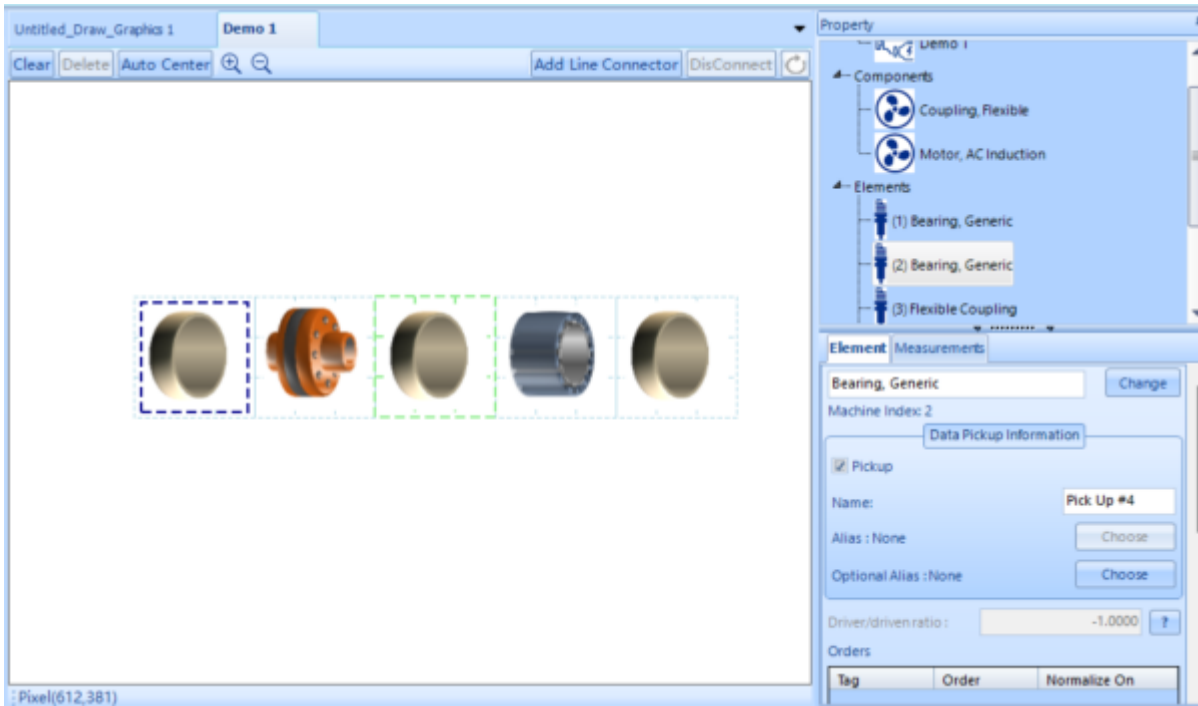
Select/Deselect the Points to set up for this machine

Name	Select
Pick Up #1	<input checked="" type="checkbox"/>
Pick Up #4	<input checked="" type="checkbox"/>
Pick Up #3	<input checked="" type="checkbox"/>



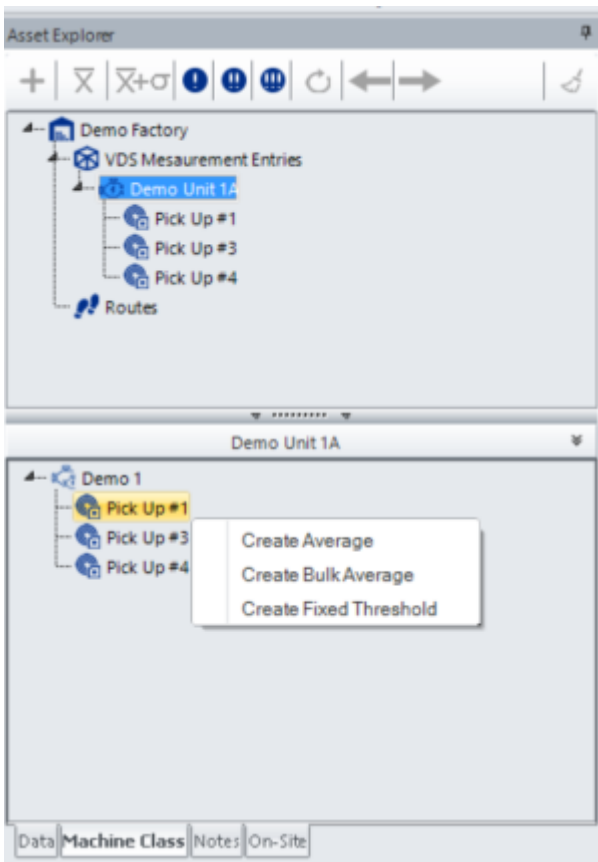
Defined by a physical data collection location on a machine in your factory

Can be directly tied to an element in a machine class through the machine builder



In the creation wizard, pick ups are assigned a name and description. They can also be enabled to apply to all machines within the machine class or all tagged machines.

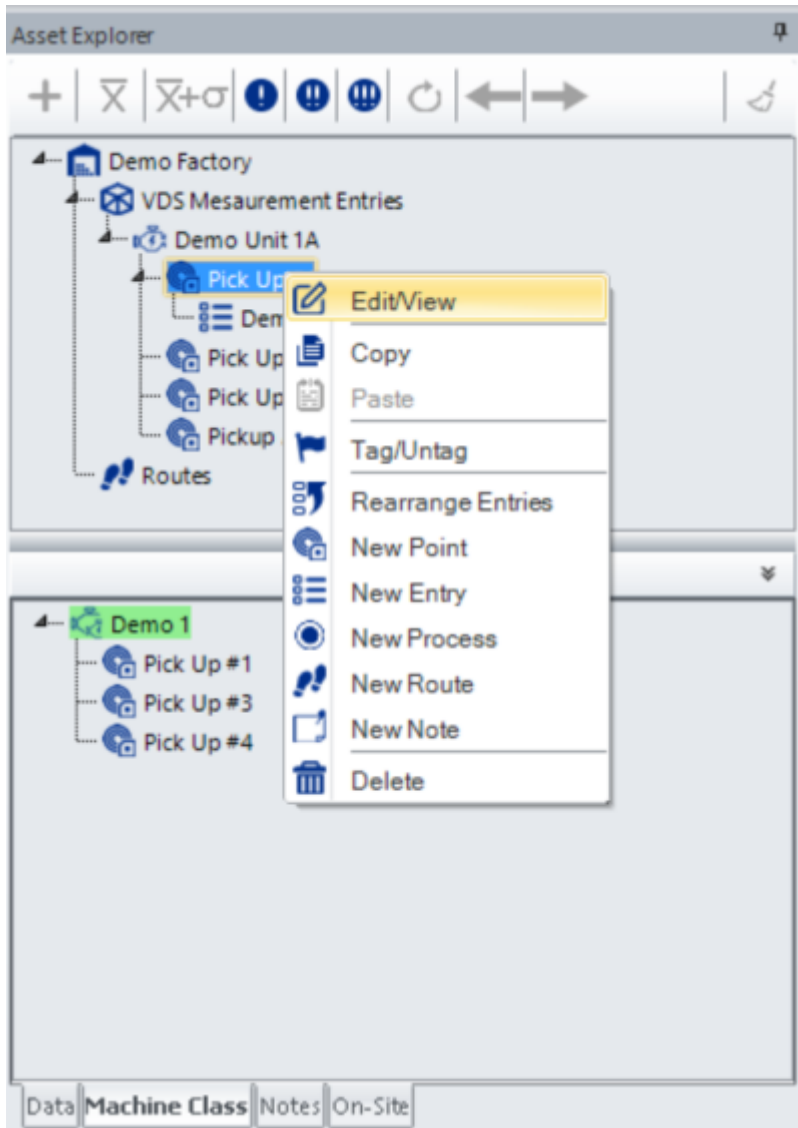
Diagnostic information such as fixed thresholds and baselines are tied to pick up points.



Baselines and Fixed Thresholds are created through the data explorer by selecting the pick up point or parent machine in the asset explorer, tabbing over to Machine Class and then right clicking the pick up to build the data analysis feature.

To set these features to apply to a point you right click on the point in the asset explorer and select

edit/view, this will open a new window where you can apply averages and thresholds as well as edit descriptions and names.



Point [X]

Name:

Short Name:

Description:

Choose Averages and Fixed Thresholds Notes

Averages

Click Modify to edit average or Right Click an average to Swap Average Modify

Name	Frequency Span	Lines	Unit

Fixed Thresholds

Click Modify to edit fixed threshold Modify

Name	Measurement Quantity	Threshold Type	Unit	Octave	Axis

Apply to all tagged machines or points in Machine Class Apply to all machines in Machine Class

OK Cancel

To learn more about VDS diagnostics features please go to [VDS Diagnostics](#)

From: <https://help.go-ci.com/> - **Crystal Instruments Help**

Permanent link: <https://help.go-ci.com/vds:pickup-point>

Last update: **2026/06/24 19:56**