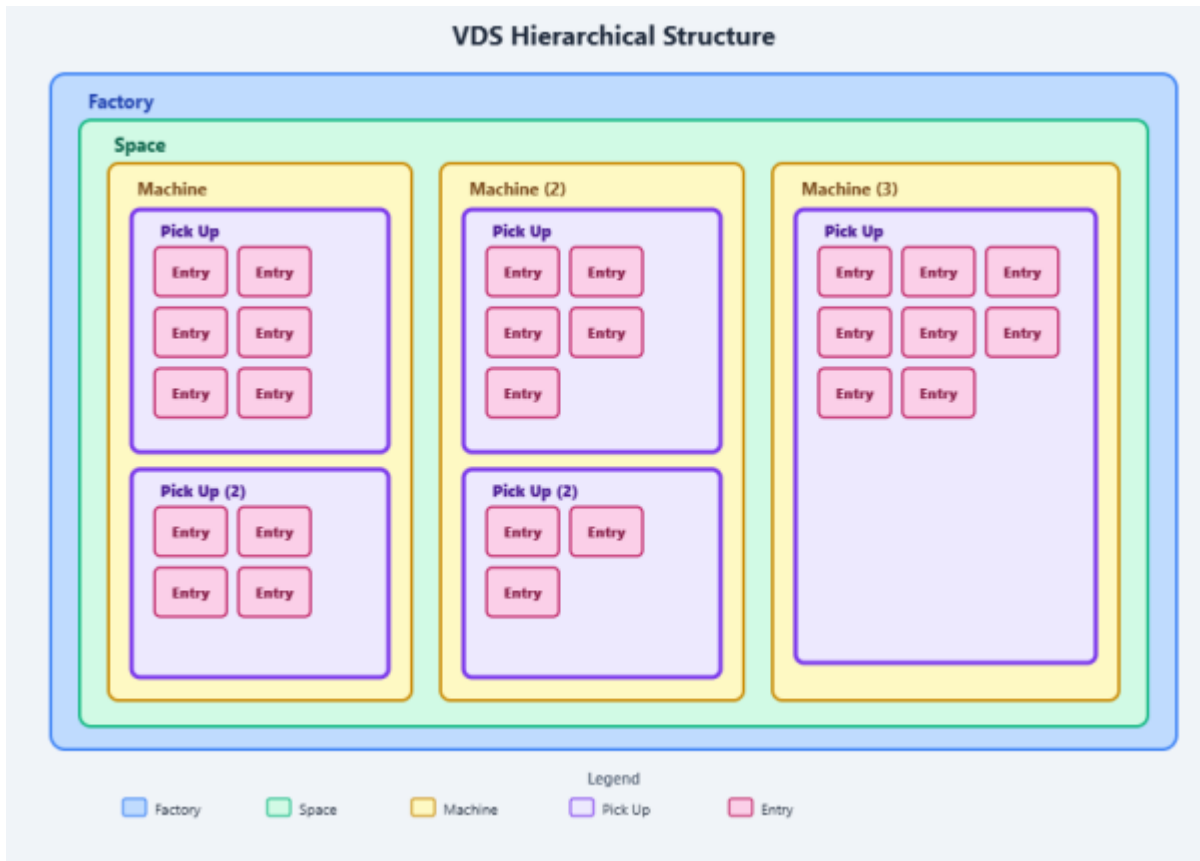


VDS Pickups



Pick Ups are found under the machine class in the hierarchical structure of a Factory

Pick Up Creation

Machine

Name:

Short Name:

Description:

S/N:

Space:

Location:

No Machine Class

Select a Machine Group:

Machine Class | Data Collector | Time and Schedule | Notes | Test Condition

Select a Machine Class:

Points | Alias | Speed

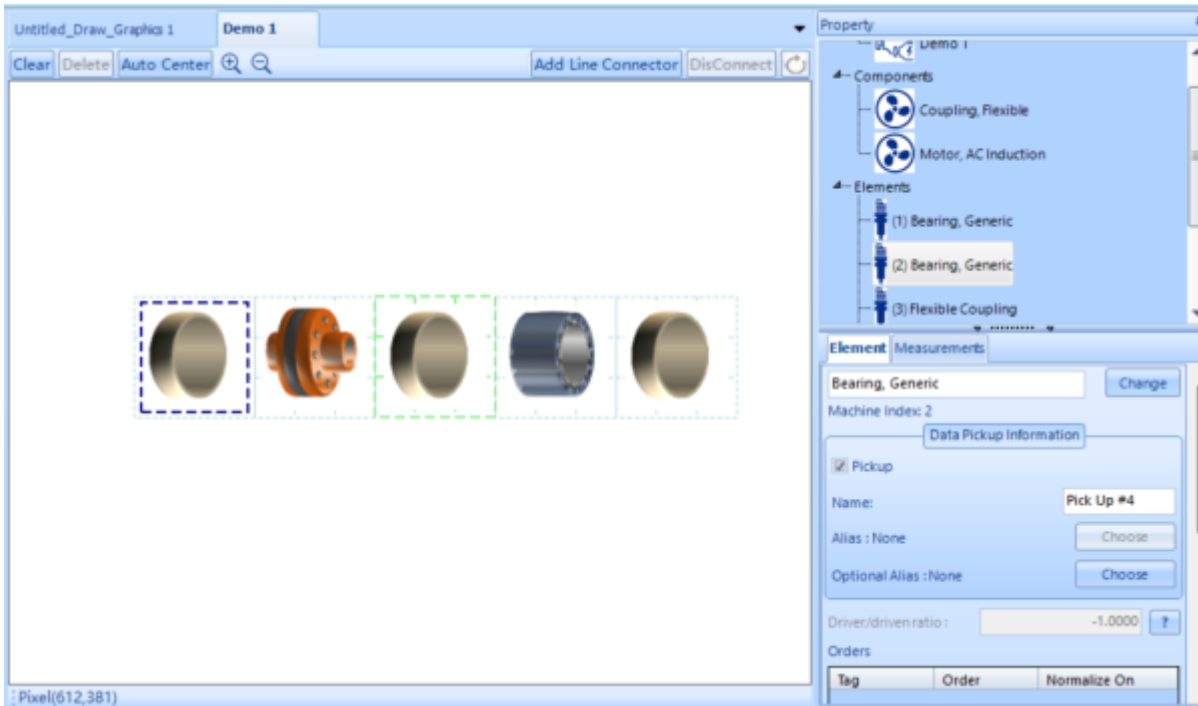
Select/Deselect the Points to set up for this machine

Name	Select
Pick Up #1	<input checked="" type="checkbox"/>
Pick Up #4	<input checked="" type="checkbox"/>
Pick Up #3	<input checked="" type="checkbox"/>

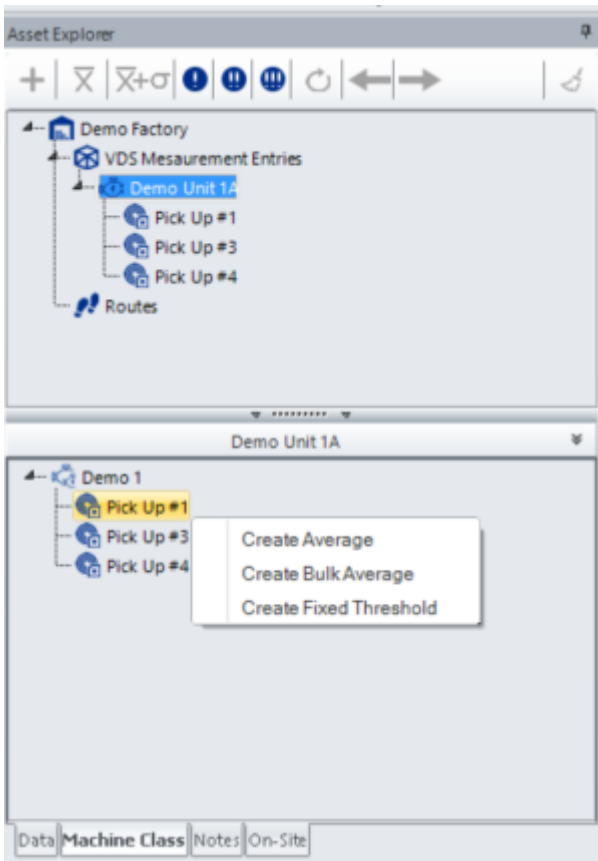
OK Cancel

Defined by a physical data collection location on a machine in your factory

Can be directly tied to an element in a machine class through the machine builder



Diagnostic information such as fixed thresholds and baselines are tied to pick up points.



Baselines and Fixed Thresholds are created through the data explorer by selecting the pick up point or parent machine in the asset explorer, tabbing over to Machine Class and then right clicking the pick up to build the data analysis feature.

From:

<https://help.go-ci.com/> - **Crystal Instruments Help**

Permanent link:

<https://help.go-ci.com/vds:pickup-point?rev=1782160796>

Last update: **2026/06/22 20:39**