

# Creating Routes

Before collecting data, you must set up your environment by creating a **Factory**, **Space**, **Machine**, and **Points**. Once these foundational elements are in place, you can proceed to create data collection routes.

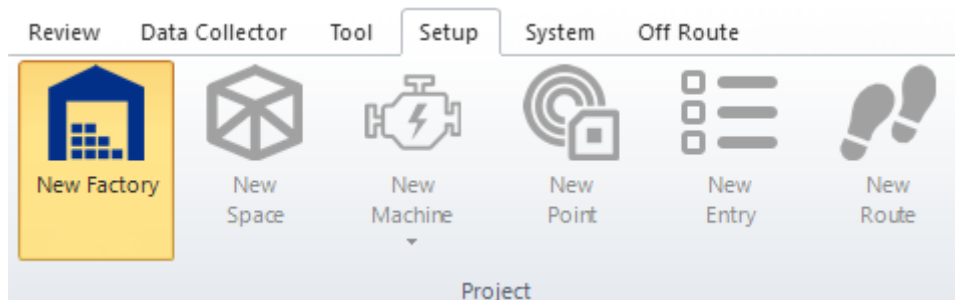
## Set Up the Factory and Space

### Create a Factory

- Navigate to Setup > New Factory under the project section to create a new factory.
- Setup the name of your factory, description, and other.

### Create a Space

- In the **Asset Explorer**, click on the newly created factory.
- Next to the “New Factory” icon, click **New Space** to add a space within the factory.
- Setup the name of your space, description, and other information.



Factory

Name:

Description:

Factory Electric Line Frequency:  Hz

Details

Contact Information Notes

Alias name:

Company name:

Country:  State:

City:  Postal code:

Postal address1:

Postal address2:

Phone1:  Phone2:

Fax1:  Fax2:

OK Cancel

## Define Machine Classes

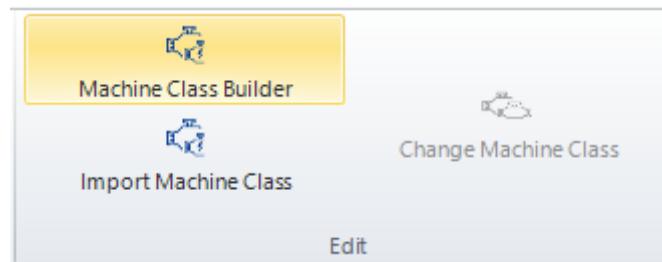
Machine classes serve as templates or models for your actual machines. They are not individual machines but represent a type of machine used in your factory. Machines must be assigned to Machine Classes in order to process a diagnostic report. If the user does not intend to use the diagnostic system, then they can skip creation of Machine Classes.

- If you have multiple machines of the same type (e.g., a fleet of AC Chilled Water units), you create a machine class to model their shared characteristics.
- Each physical machine will be instantiated under that class in your database.
- If you already have a machine class file, click **Import Machine Class** and select your file to import it.

## To create or import a Machine Class:

1. Click the **Machine Class Builder** icon in the Edit section.
2. Use the **Open** icon in the Library section and select **Component** from the side menu to begin adding components.
3. Create a new Machine Class by clicking **Machine Class** under the New section
4. Drag and drop items from the **Tools** panel into the center window to build your machine class.
5. Use the **Property** bar on the right to configure details for each component.

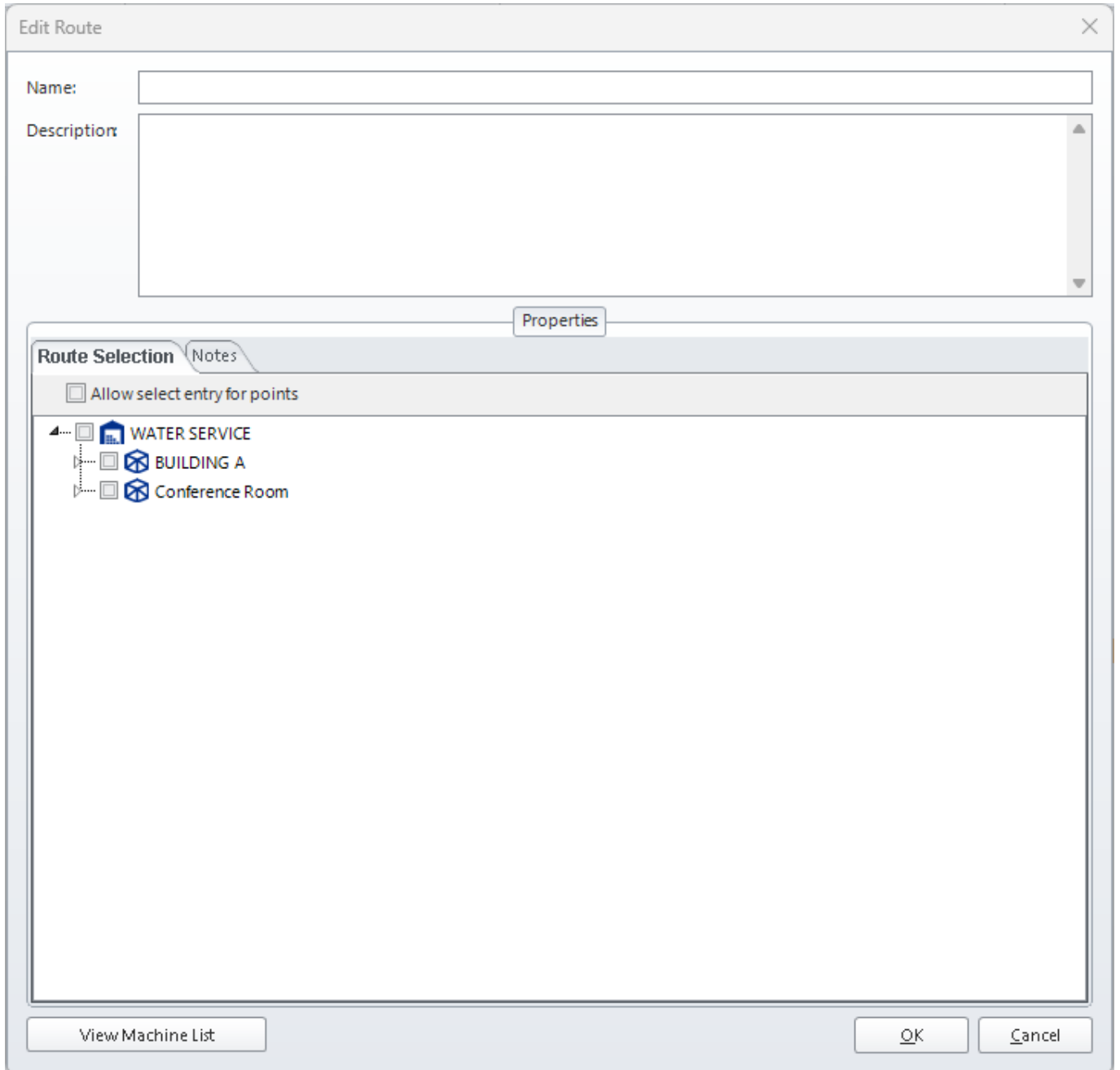
**Note:** New databases come pre-populated with components, but machine classes must be created by the user to match their specific factory setup.



## Create Machines

1. Once your machine class is ready:
2. In the **Asset Explorer**, click on the **Space** you created.
3. Click **New Machine**.
4. In the **Machine Setup** window:
  1. Assign a name to the machine.
  2. Assign a Machine Class from the dropdown list, or select "No Machine Class"
  3. If using a Machine Class, select the data collection points associated with this machine.





From: <https://help.go-ci.com/> - **Crystal Instruments Help**

Permanent link: <https://help.go-ci.com/vds:routes>

Last update: **2025/06/12 22:59**