

# Creating Routes

Before collecting data, you must set up your environment by creating a **Factory, Space, Machine,** and **Points**. Once these foundational elements are in place, you can proceed to create data collection routes.

## Set Up the Factory and Space

### Create a Factory

Navigate to Setup > New Factory under the project section to create a new factory.

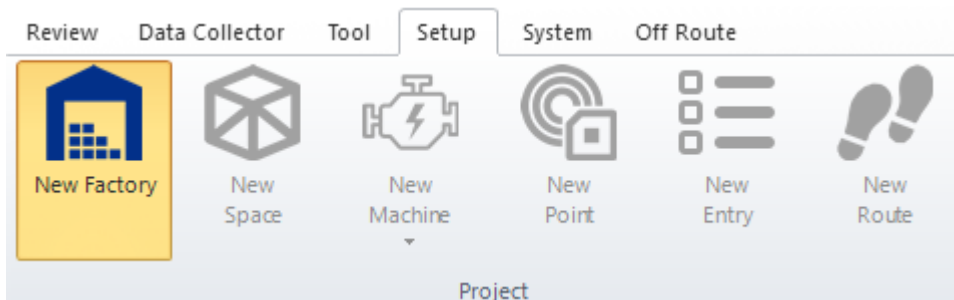
Setup the name of your factory, description, and other.

### Create a Space

In the **Asset Explorer**, click on the newly created factory.

Next to the “New Factory” icon, click **New Space** to add a space within the factory.

Setup the name of your space, description, and other information.



The image shows a 'Factory' dialog box with a close button (X) in the top right corner. It contains the following fields and controls:

- Name:** A text input field.
- Description:** A text area with scrollbars.
- Factory Electric Line Frequency:** A numeric spinner set to 60 Hz.
- Details:** A sub-dialog box with two tabs: 'Contact Information' (selected) and 'Notes'.
  - Alias name:** Text input.
  - Company name:** Text input.
  - Country:** Text input.
  - State:** Text input.
  - City:** Text input.
  - Postal code:** Text input.
  - Postal address1:** Text input.
  - Postal address2:** Text input.
  - Phone1:** Text input.
  - Phone2:** Text input.
  - Fax1:** Text input.
  - Fax2:** Text input.

At the bottom of the main dialog are 'OK' and 'Cancel' buttons.

## Define Machine Classes

Machine classes serve as templates or models for your actual machines. They are not individual machines but represent a type of machine used in your factory.

If you have multiple machines of the same type (e.g., a fleet of AC Chilled Water units), you create a machine class to model their shared characteristics.

Each physical machine will be instantiated under that class in your database.

If you already have a machine class file, click **Import Machine Class** and select your file to import it.

### To create or import a Machine Class:

Click the **Machine Class Builder** icon in the Edit section.

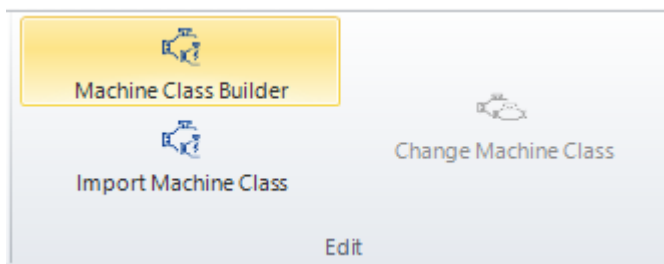
Use the **Open** icon in the Library section and select **Component** from the side menu to begin adding components.

Create a new Machine Class by clicking **Machine Class** under the New section

Drag and drop items from the **Tools** panel into the center window to build your machine class.

Use the **Property** bar on the right to configure details for each component.

**Note:** New databases come pre-populated with components, but machine classes must be created by the user to match their specific factory setup.



## Create Machines

Once your machine class is ready:

In the **Asset Explorer**, click on the **Space** you created.

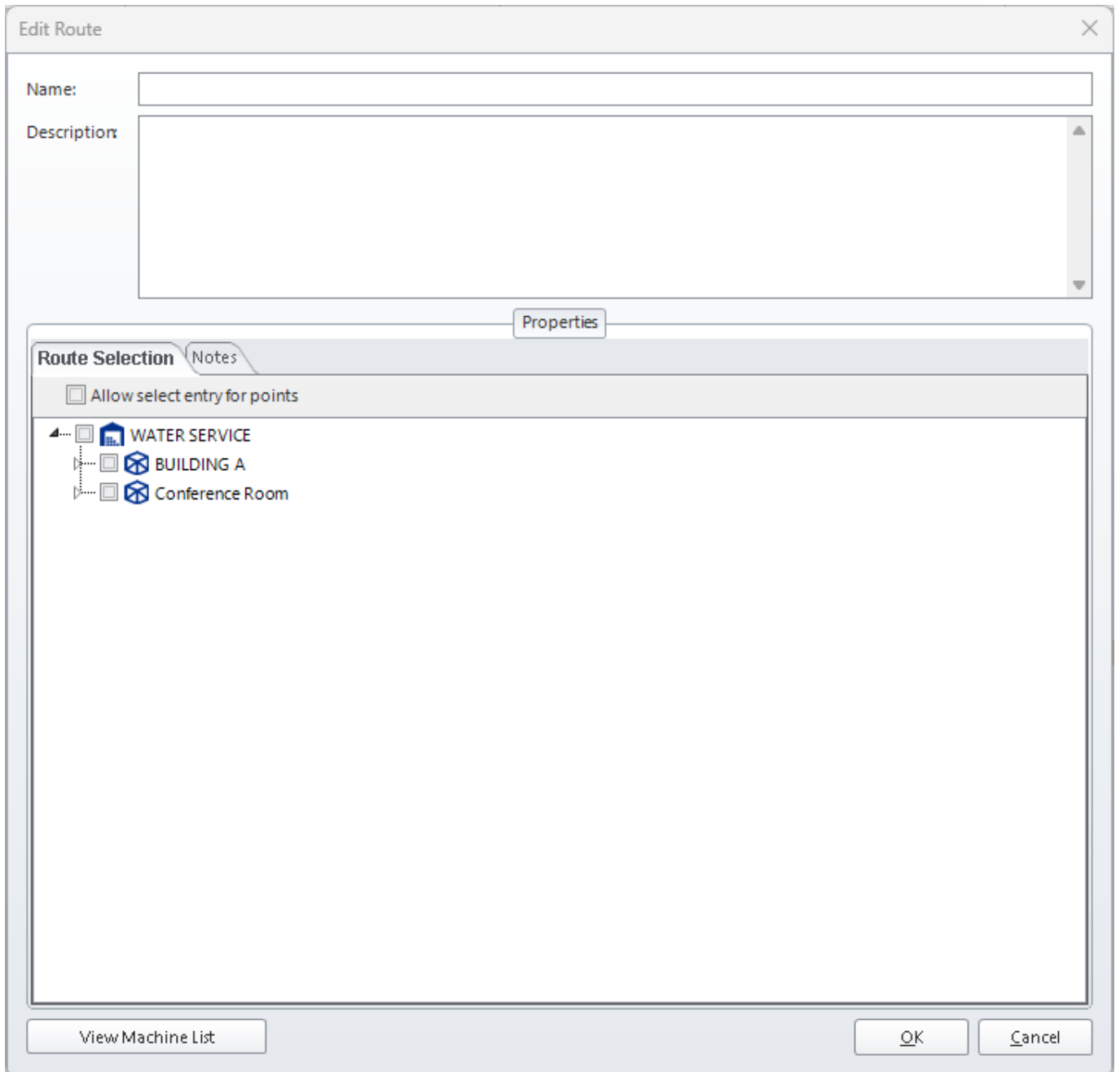
Click **New Machine**.

In the **Machine Setup** window:

Assign a name to the machine.

Select the data collection points associated with this machine.





From: <https://help.go-ci.com/> - **Crystal Instruments Help**

Permanent link: <https://help.go-ci.com/vds:routes?rev=1748382025>

Last update: **2025/05/27 21:40**