

Creating Routes

Before collecting data, you must set up your environment by creating a **Factory**, **Space**, **Machine**, and **Points**. Once these foundational elements are in place, you can proceed to create data collection routes.

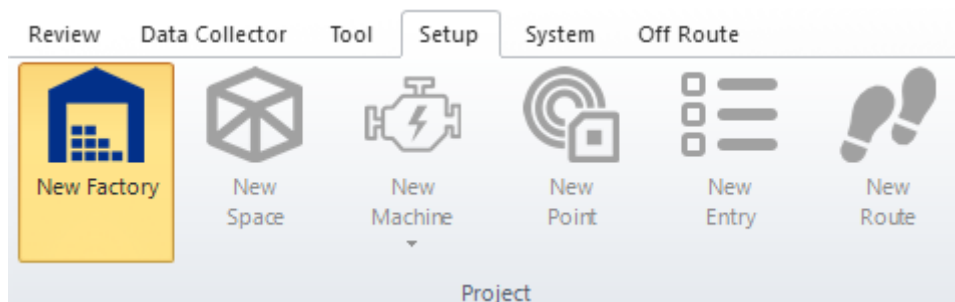
Set Up the Factory and Space

Create a Factory

- Navigate to Setup > New Factory under the project section to create a new factory.
- Setup the name of your factory, description, and other.

Create a Space

- In the **Asset Explorer**, click on the newly created factory.
- Next to the “New Factory” icon, click **New Space** to add a space within the factory.
- Setup the name of your space, description, and other information.



The screenshot shows a 'Factory' configuration window. At the top, there's a title bar with 'Factory' and a close button. Below the title bar, there are three main input areas: 'Name' (a single-line text box), 'Description' (a multi-line text area), and 'Factory Electric Line Frequency' (a numeric spinner box set to 60 Hz). Below these is a 'Details' tab, which is currently selected. Under the 'Details' tab, there's a 'Contact Information' sub-section with a 'Notes' tab. The 'Contact Information' section contains several fields: 'Alias name', 'Company name', 'Country', 'State', 'City', 'Postal code', 'Postal address1', 'Postal address2', 'Phone1', 'Phone2', 'Fax1', and 'Fax2'. At the bottom right of the window are 'OK' and 'Cancel' buttons.

Define Machine Classes

Machine classes serve as templates or models for your actual machines. They are not individual machines but represent a type of machine used in your factory.

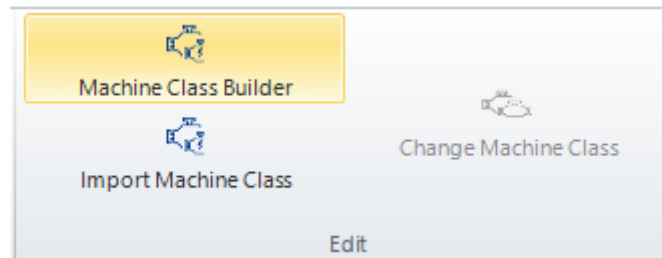
- If you have multiple machines of the same type (e.g., a fleet of AC Chilled Water units), you create a machine class to model their shared characteristics.
- Each physical machine will be instantiated under that class in your database.
- If you already have a machine class file, click **Import Machine Class** and select your file to import it.

To create or import a Machine Class:

1. Click the **Machine Class Builder** icon in the Edit section.

2. Use the **Open** icon in the Library section and select **Component** from the side menu to begin adding components.
3. Create a new Machine Class by clicking **Machine Class** under the New section
4. Drag and drop items from the **Tools** panel into the center window to build your machine class.
5. Use the **Property** bar on the right to configure details for each component.

Note: New databases come pre-populated with components, but machine classes must be created by the user to match their specific factory setup.



Create Machines

1. Once your machine class is ready:
2. In the **Asset Explorer**, click on the **Space** you created.
3. Click **New Machine**.
4. In the **Machine Setup** window:
 1. Assign a name to the machine.
 2. Select the data collection points associated with this machine.

Machine

Name:

Short Name:

Description:

S/N:

Space:

Location:

No Machine Class

Select a Machine Group:

Machine Class | Data Collector | Time and Schedule | Notes | Test Condition | Picture

Select a Machine Class:

Points | Alias | Speed

Select/Deselect the Points to set up for this machine

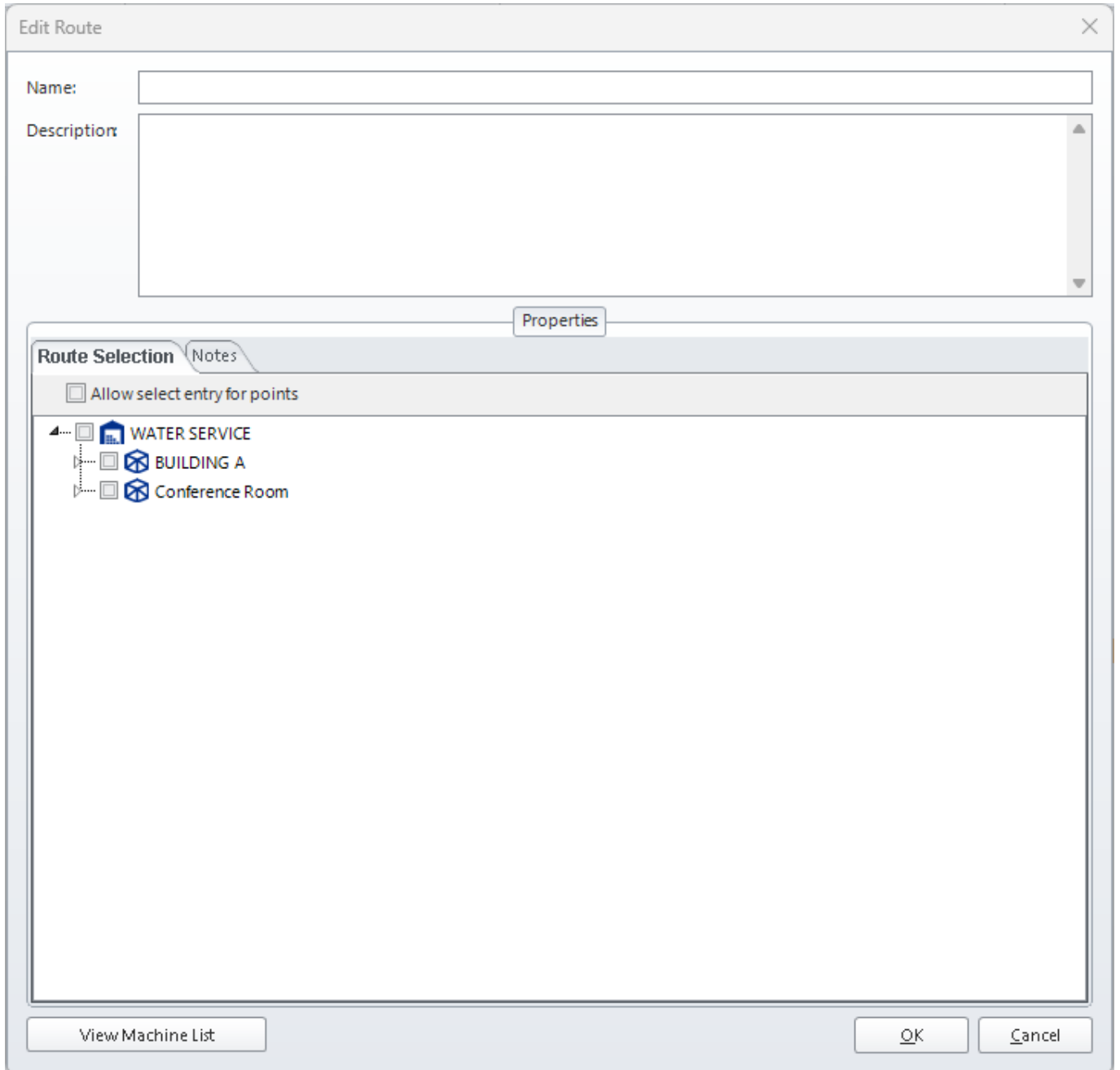
Name	Select
------	--------

OK Cancel

Create a Route

After machines are defined:

- Click the **New Route** icon.
- Select the points you want to include in the route.



From: <https://help.go-ci.com/> - **Crystal Instruments Help**

Permanent link: <https://help.go-ci.com/vds:routes?rev=1748382764>

Last update: **2025/05/27 21:52**