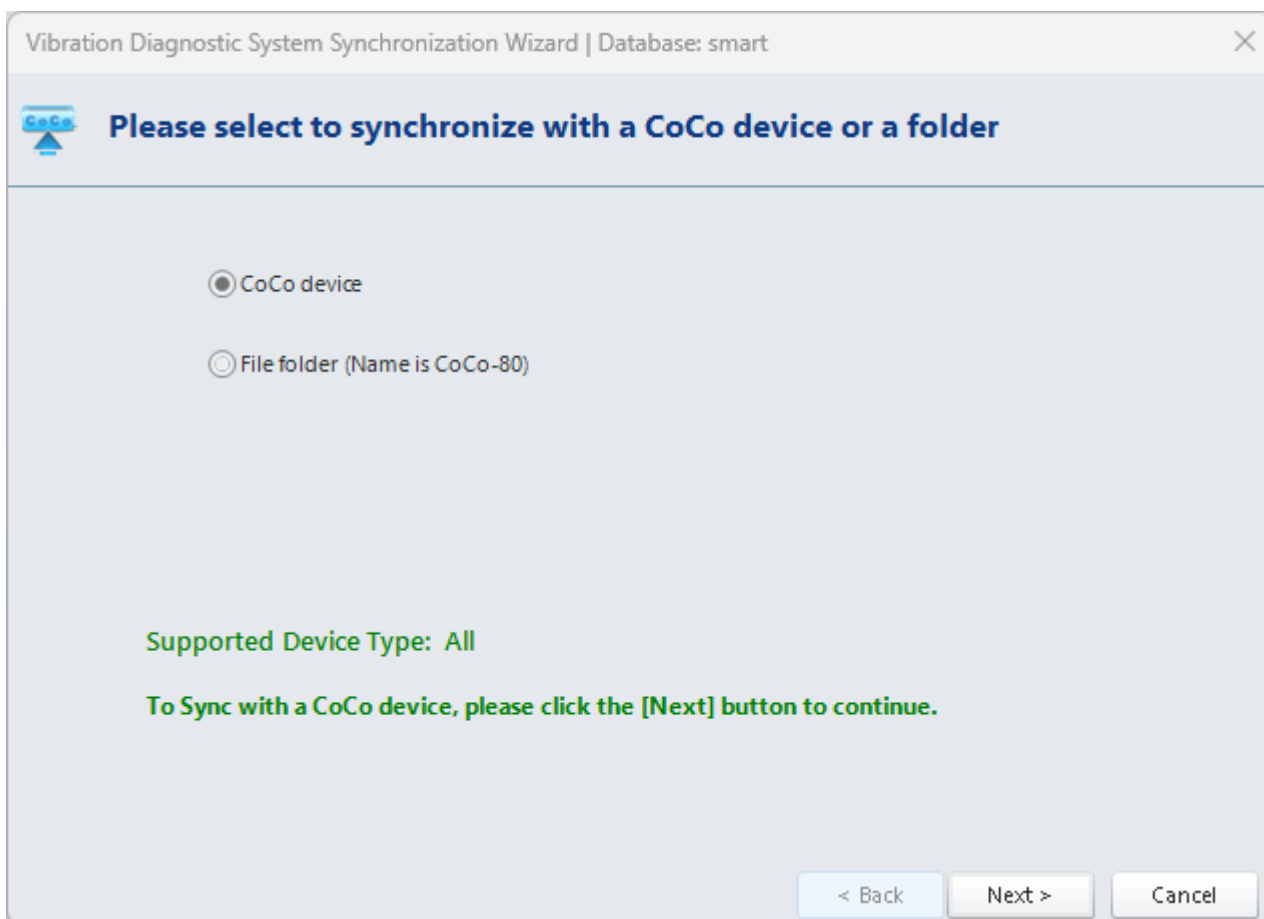
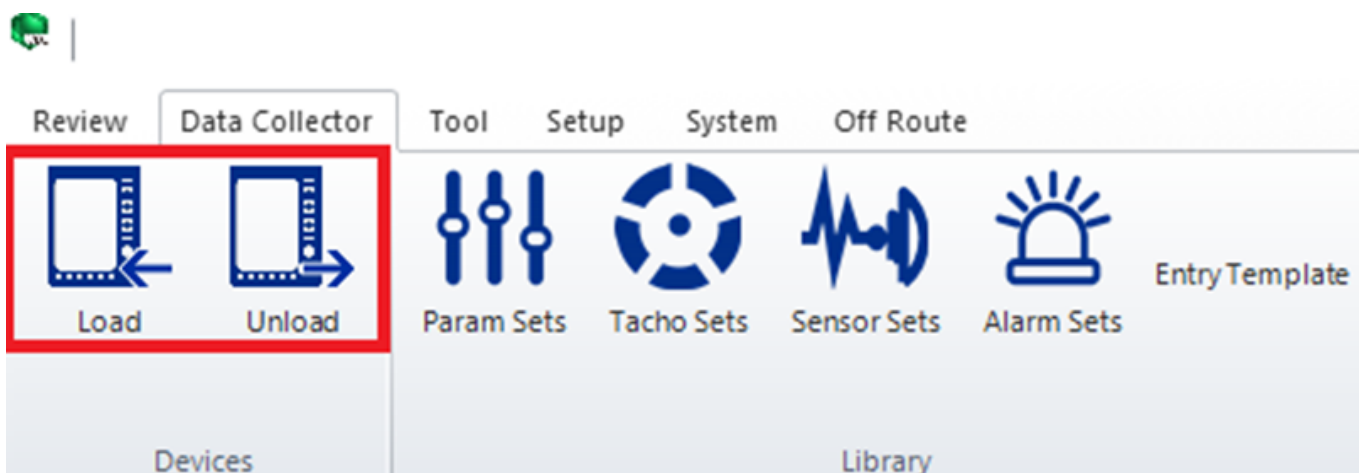



Loading and Unloading Data from CoCo




Vibration Diagnostic System Synchronization Wizard | Database: smart

 **Please select a CoCo device and click the [Connect] button**

Please click the [Connect] button to connect with a CoCo device.

Vibration Diagnostic System Synchronization Wizard | Database: smart

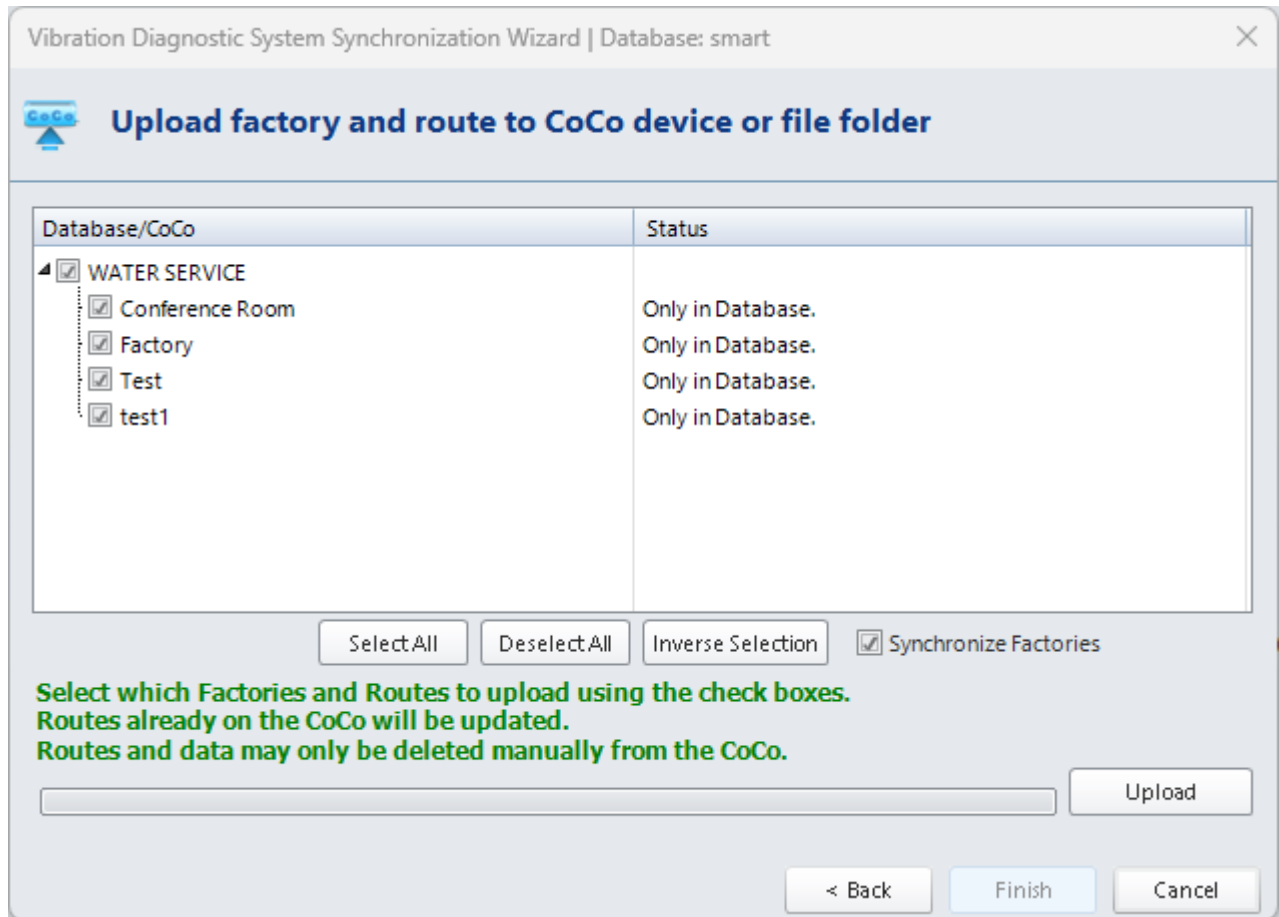
 **Select an option**

What do you want to do?

Load Factories and Routes

Sync Note Codes

Delete Data



1. First Connect your CoCo device by ethernet to your PC.
2. In VDS, click **Data Collector** > in the **Devices** menu, click **Load** > Click **CoCo device** > **Select the Device you are using** > Click **Next** > Click **Load Factories and Routes** > Click **Next**
3. Your VDS will have Factories and Routes to choose to upload to your CoCo device. **Select options to upload** > Click **Upload** > Click **Finish**

To Unload, follow the same steps from above after clicking **Unload** from the **Devices** menu.

From:
<https://help.go-ci.com/> - **Crystal Instruments Help**

Permanent link:
<https://help.go-ci.com/vds:transfer>

Last update: **2024/12/20 20:39**