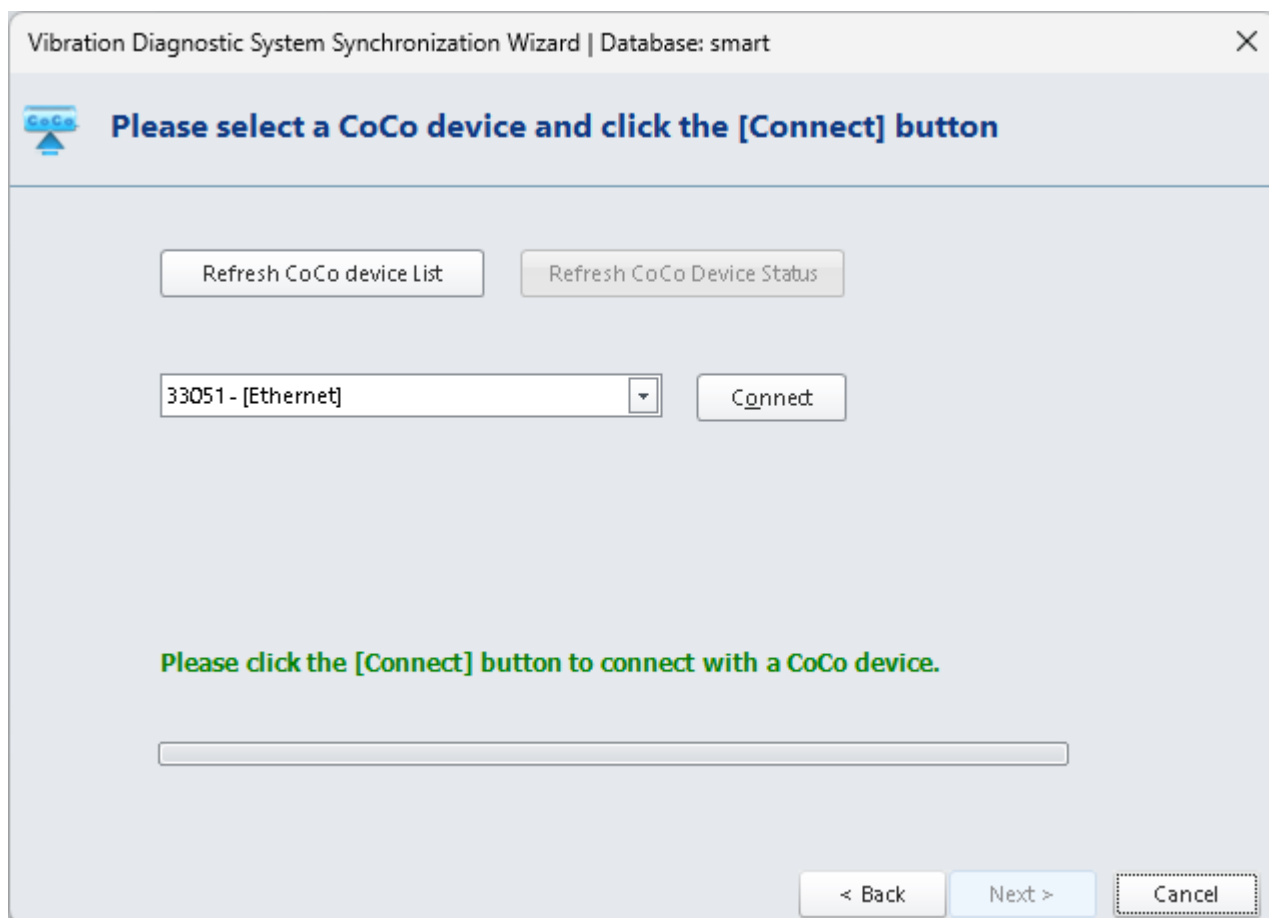
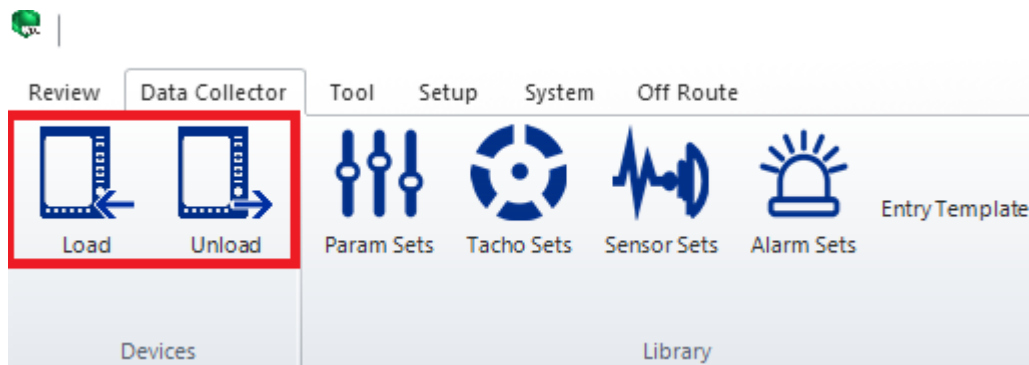



# Loading and Unloading Data from CoCo



Vibration Diagnostic System Synchronization Wizard | Database: smart



Select an option

What do you want to do?

☒ Load Factories and Routes

☐ Sync Note Codes


☐ Delete Data

< Back

Next >

Cancel

Vibration Diagnostic System Synchronization Wizard | Database: smart



Upload factory and route to CoCo device or file folder

Database/CoCo	Status
<div><div><input checked="" type="checkbox"/> WATER SERVICE</div><div><div><input checked="" type="checkbox"/> Conference Room</div><div><input checked="" type="checkbox"/> Factory</div><div><input checked="" type="checkbox"/> Test</div><div><input checked="" type="checkbox"/> test1</div></div></div>	<div>Only in Database.</div> <div>Only in Database.</div> <div>Only in Database.</div> <div>Only in Database.</div>

Select All

Deselect All

Inverse Selection

☒ Synchronize Factories

Select which Factories and Routes to upload using the check boxes.  
Routes already on the CoCo will be updated.  
Routes and data may only be deleted manually from the CoCo.

Upload

< Back

Finish

Cancel

1. First Connect your CoCo device by ethernet to your PC.

2. In VDS, click **Data Collector** > in the **Devices** menu, click **Load** > Click **CoCo**

https://help.go-ci.com/

Printed on 2026/02/12 02:39

**device > Select the Device you are using > Click Next > Click Load Factories and Routes > Click Next**

3. Your VDS will have Factories and Routes to choose to upload to your CoCo device.

**Select options to upload > Click Upload > Click Finish**

From:

<https://help.go-ci.com/> - **Crystal Instruments Help**

Permanent link:

<https://help.go-ci.com/vds:transfer?rev=1734725264>

Last update: **2024/12/20 20:07**