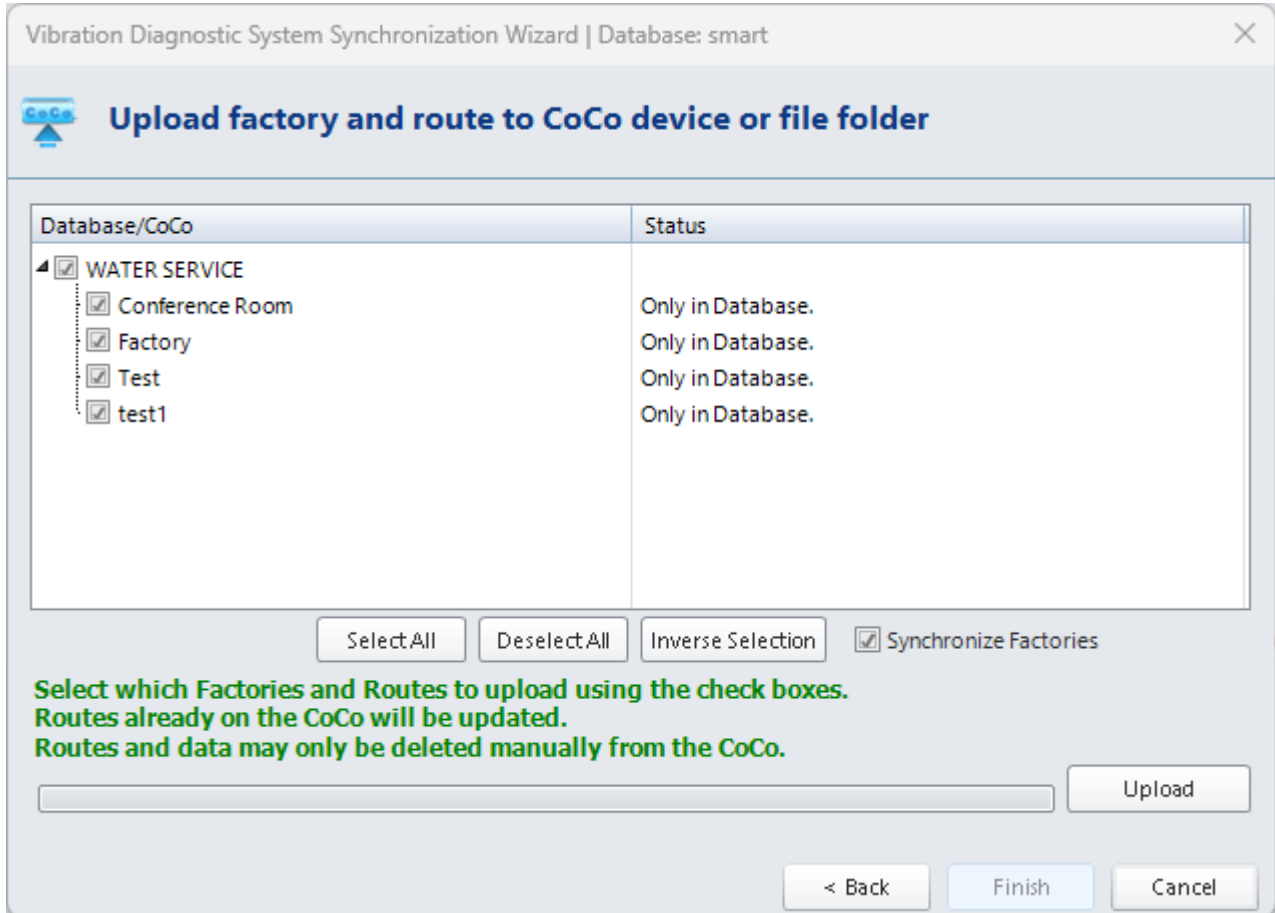
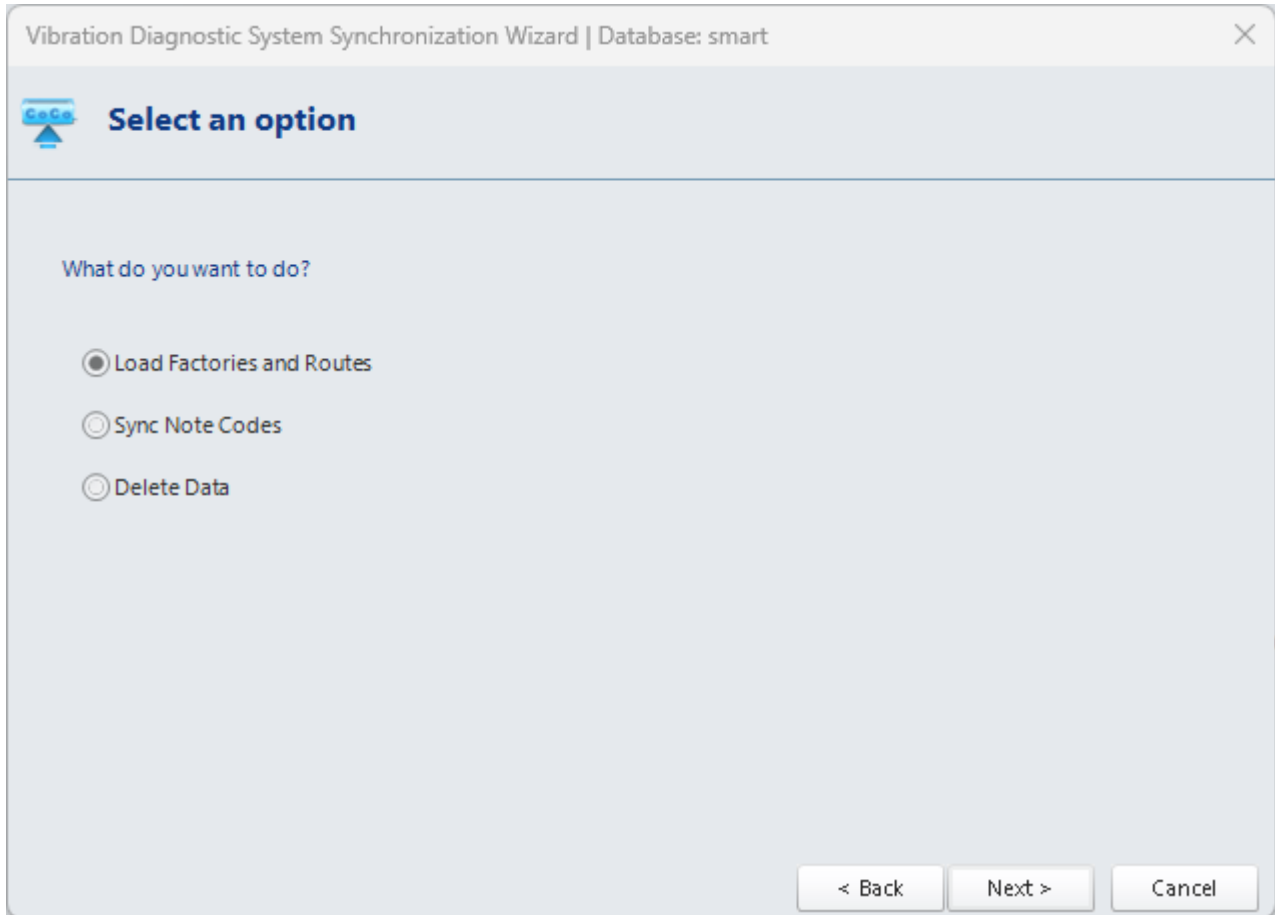


# Loading and Unloading Data from CoCo

The screenshot shows a software interface with a top navigation bar containing tabs: Review, Data Collector, Tool, Setup, System, and Off Route. The 'Data Collector' tab is active, and within it, the 'Load' and 'Unload' buttons are highlighted with a red border. Below these buttons are 'Param Sets', 'Tacho Sets', 'Sensor Sets', and 'Alarm Sets' options. The 'Devices' section is visible at the bottom left of the main interface.

A dialog box titled 'Vibration Diagnostic System Synchronization Wizard | Database: smart' is open. It contains the following elements:

- CoCo logo and the instruction: **Please select a CoCo device and click the [Connect] button**
- Buttons: 'Refresh CoCo device List' and 'Refresh CoCo Device Status'
- A dropdown menu showing '33051 - [Ethernet]' and a 'Connect' button.
- A green instruction: **Please click the [Connect] button to connect with a CoCo device.**
- A progress bar.
- Navigation buttons: '< Back', 'Next >', and 'Cancel'.



1. First Connect your CoCo device by ethernet to your PC.
2. In VDS, click **Data Collector** > in the **Devices** menu, click **Load** > Click **CoCo**

**device > Select the Device you are using > Click Next > Click Load Factories and Routes > Click Next**

3. Your VDS will have Factories and Routes to choose to upload to your CoCo device.

**Select options to upload > Click Upload > Click Finish**

From:

<https://help.go-ci.com/> - **Crystal Instruments Help**

Permanent link:

<https://help.go-ci.com/vds:transfer?rev=1734725293>

Last update: **2024/12/20 20:08**