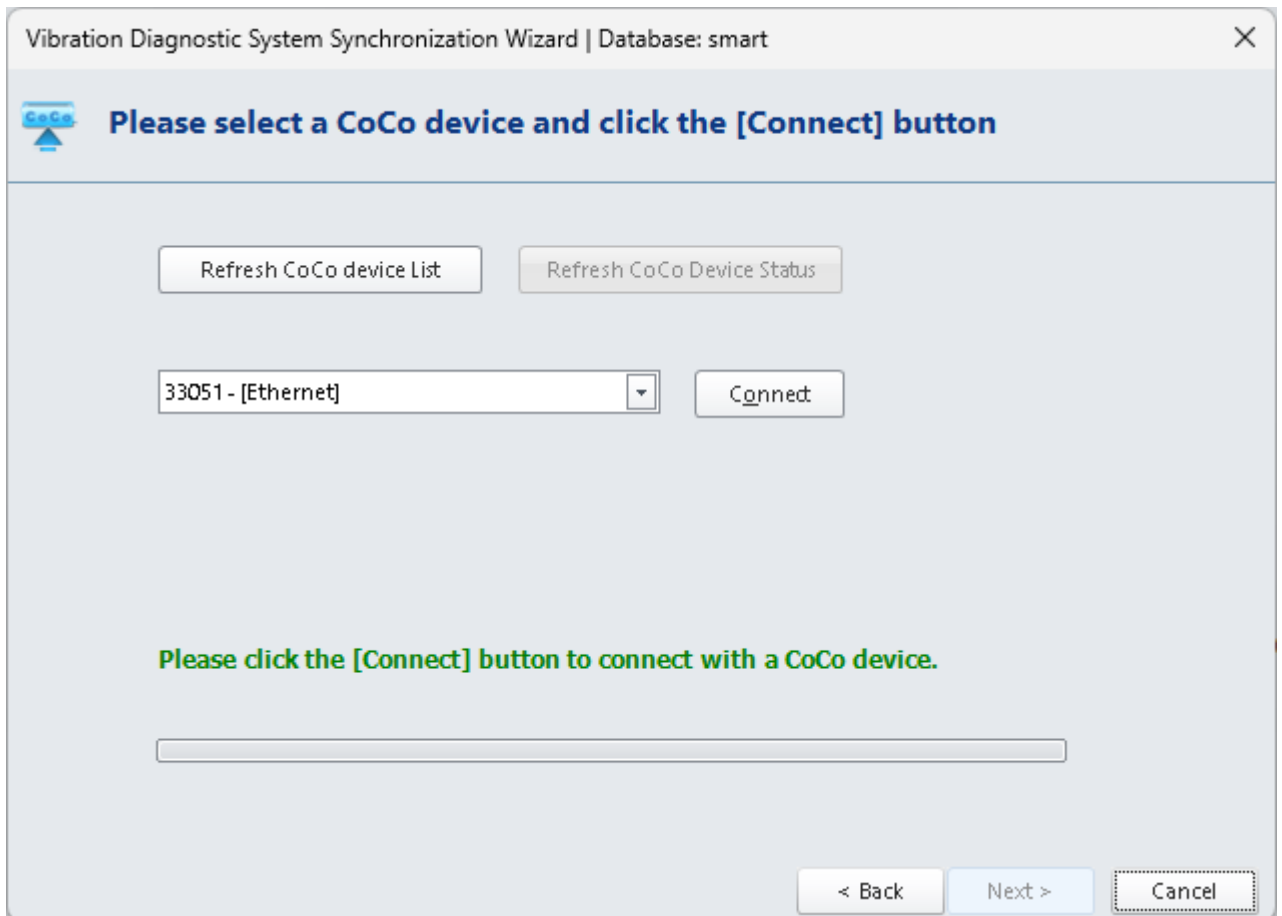
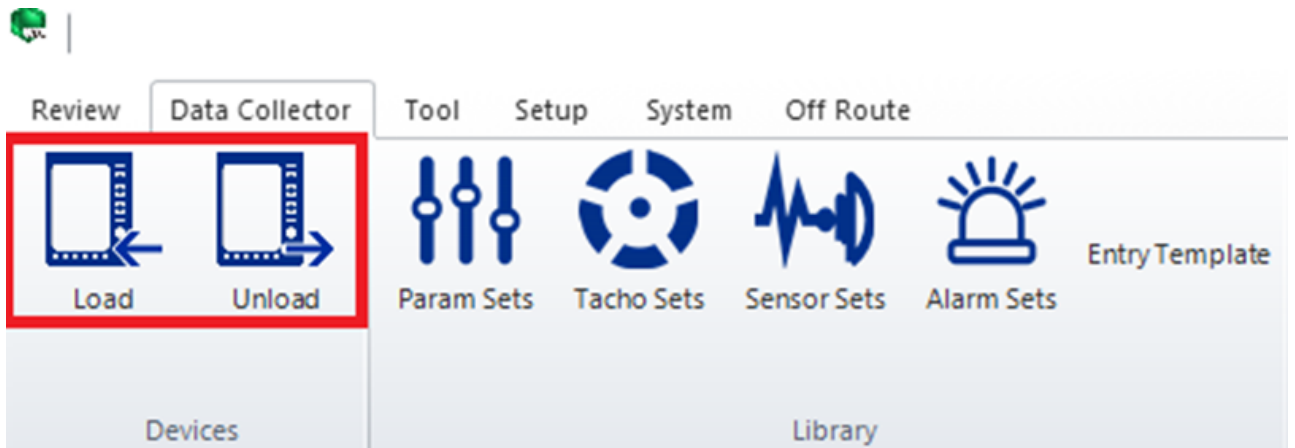
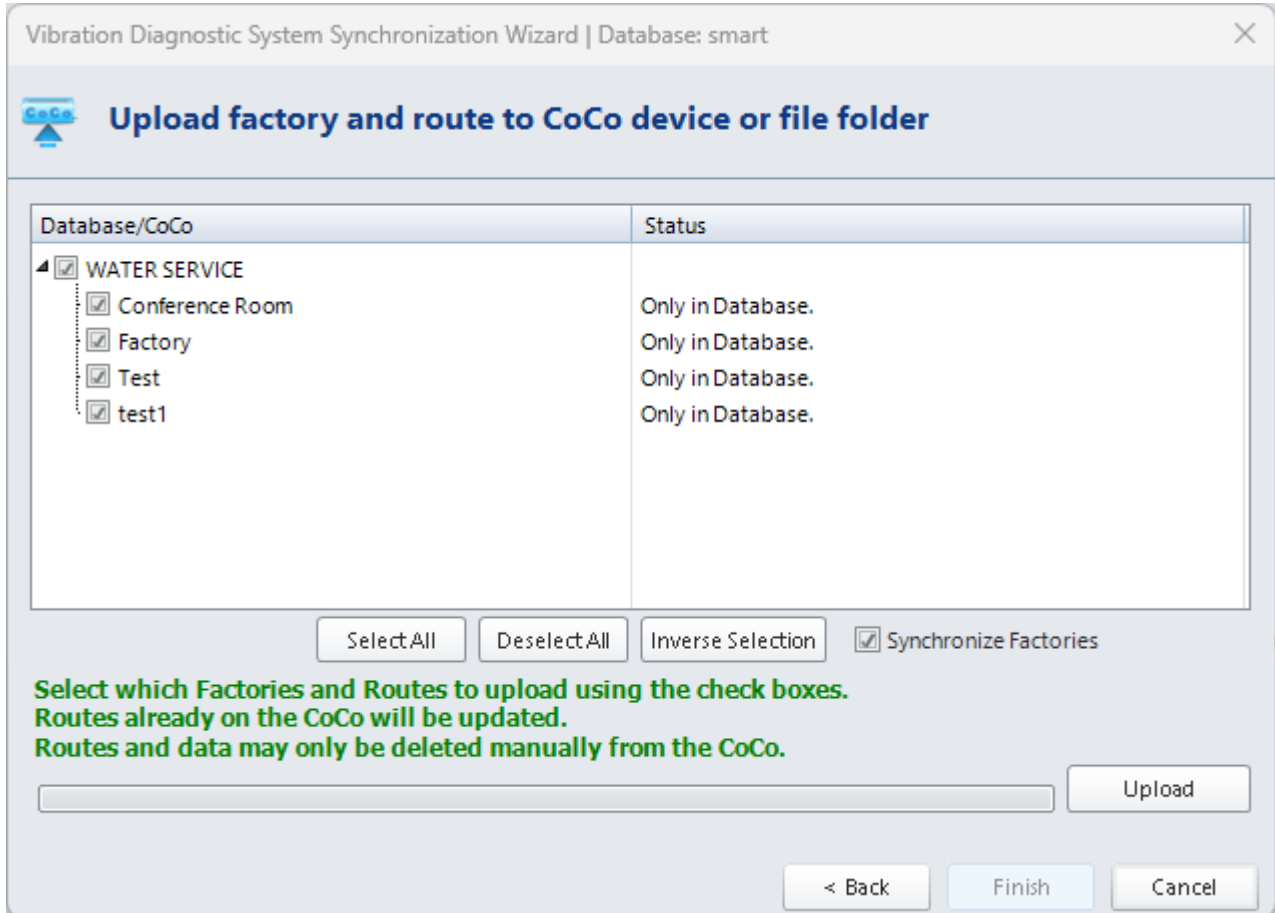
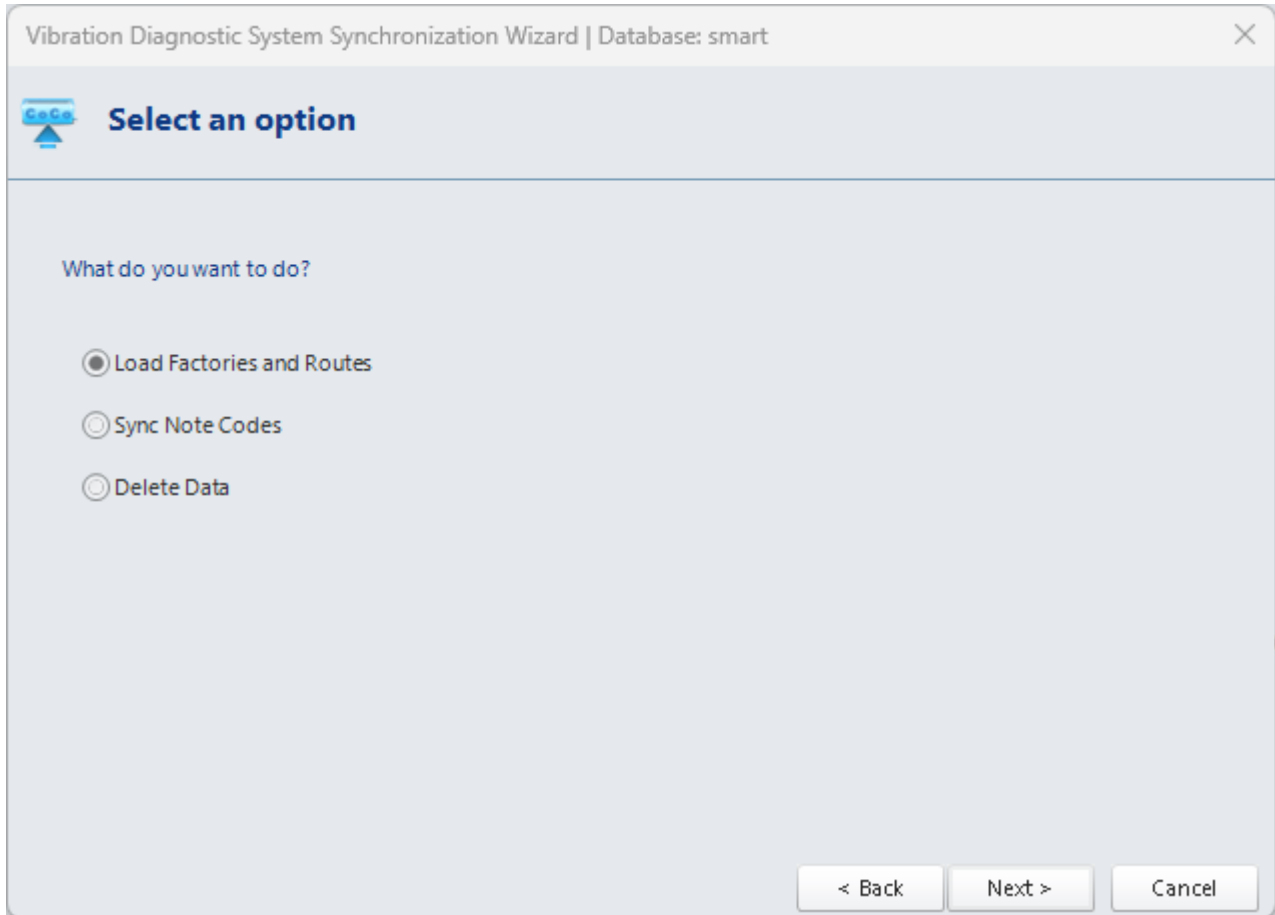


Loading and Unloading Data from CoCo





1. First Connect your CoCo device by ethernet to your PC.
2. In VDS, click **Data Collector** > in the **Devices** menu, click **Load** > Click **CoCo**

device > Select the Device you are using > Click Next > Click Load Factories and Routes > Click Next

3. Your VDS will have Factories and Routes to choose to upload to your CoCo device.

Select options to upload > Click Upload > Click Finish

To Unload, follow the same steps from above after clicking **Unload** from the **Devices** menu.

From:

<https://help.go-ci.com/> - **Crystal Instruments Help**

Permanent link:

<https://help.go-ci.com/vds:transfer?rev=1734725399>

Last update: **2024/12/20 20:09**