


Loading and Unloading Data from CoCo

The screenshot shows a software interface with a top navigation bar containing tabs: Review, Data Collector, Tool, Setup, System, and Off Route. The 'Data Collector' tab is active, and within it, the 'Load' and 'Unload' buttons are highlighted with a red border. Below these buttons are labels for 'Param Sets', 'Tacho Sets', 'Sensor Sets', and 'Alarm Sets'. The interface is divided into 'Devices' and 'Library' sections.

Below the main interface is a dialog box titled 'Vibration Diagnostic System Synchronization Wizard | Database: smart'. The dialog contains the following text and options:


- Please select to synchronize with a CoCo device or a folder**
- CoCo device
- File folder (Name is CoCo-80)
- Supported Device Type: All
- To Sync with a CoCo device, please click the [Next] button to continue.
- Buttons: < Back, Next >, Cancel

Vibration Diagnostic System Synchronization Wizard | Database: smart

 **Please select a CoCo device and click the [Connect] button**

Please click the [Connect] button to connect with a CoCo device.

Vibration Diagnostic System Synchronization Wizard | Database: smart

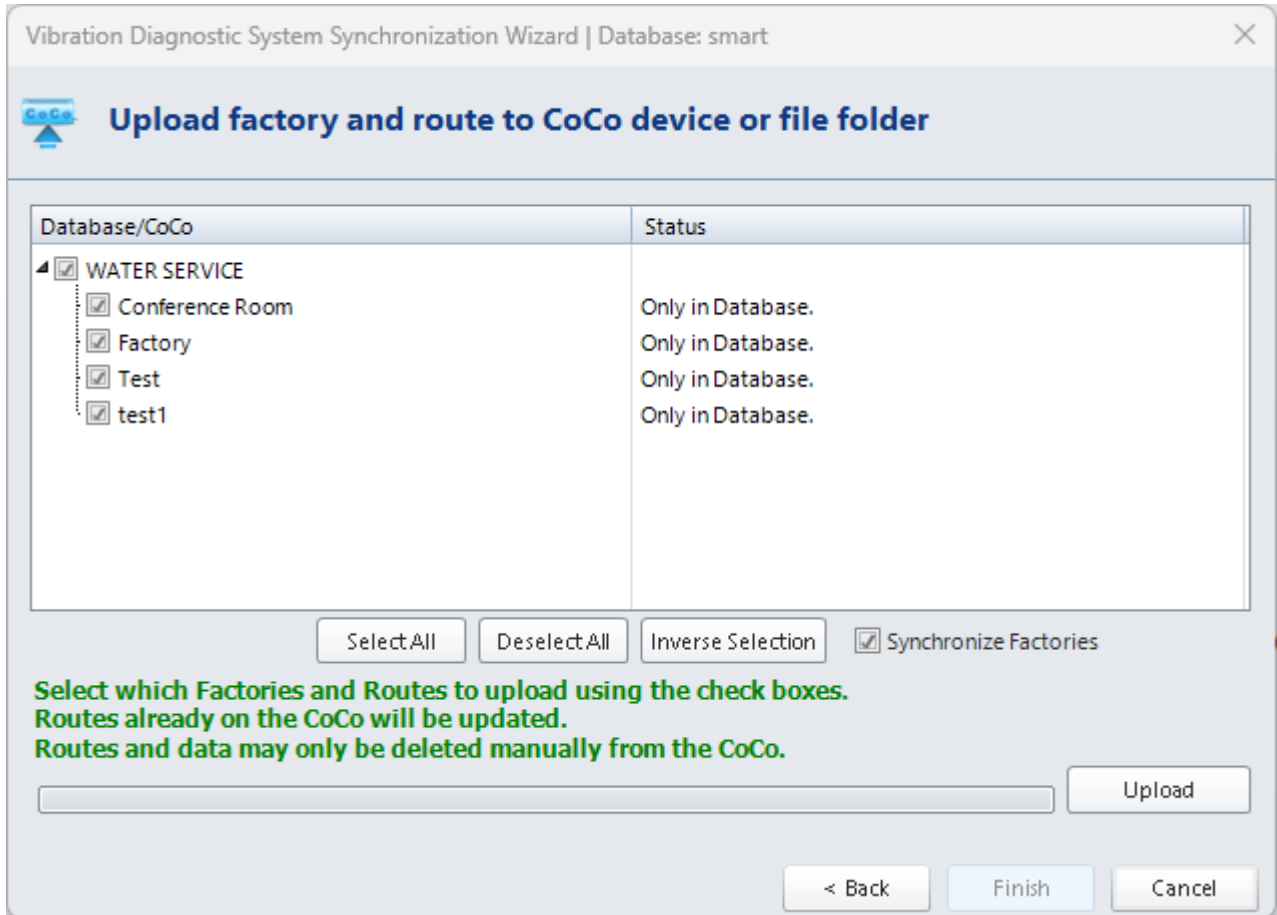
 **Select an option**

What do you want to do?

Load Factories and Routes

Sync Note Codes

Delete Data



1. First Connect your CoCo device by ethernet to your PC.
2. In VDS, click **Data Collector** > in the **Devices** menu, click **Load** > Click **CoCo device** > **Select the Device you are using** > Click Next > Click **Load Factories and Routes** > Click **Next**
3. Your VDS will have Factories and Routes to choose to upload to your CoCo device. **Select options to upload** > Click **Upload** > Click **Finish**

To Unload, follow the same steps from above after clicking **Unload** from the **Devices** menu.

From:

<https://help.go-ci.com/> - **Crystal Instruments Help**

Permanent link:

<https://help.go-ci.com/vds:transfer?rev=1734725654>

Last update: **2024/12/20 20:14**