


Loading and Unloading Data from CoCo


The screenshot shows a software interface with a top navigation bar containing tabs: Review, Data Collector, Tool, Setup, System, and Off Route. The 'Data Collector' tab is active, and within it, the 'Load' and 'Unload' buttons are highlighted with a red border. Below these buttons are labels for 'Devices' and 'Library'. To the right, there are icons for 'Param Sets', 'Tacho Sets', 'Sensor Sets', and 'Alarm Sets', with an 'Entry Template' label. Below the interface is a dialog box titled 'Vibration Diagnostic System Synchronization Wizard | Database: smart'. The dialog contains a CoCo logo and the text 'Please select to synchronize with a CoCo device or a folder'. There are two radio button options: 'CoCo device' (selected) and 'File folder (Name is CoCo-80)'. Below the options, it says 'Supported Device Type: All' and 'To Sync with a CoCo device, please click the [Next] button to continue.' At the bottom right of the dialog are three buttons: '< Back', 'Next >', and 'Cancel'.

Vibration Diagnostic System Synchronization Wizard | Database: smart

 **Please select a CoCo device and click the [Connect] button**

Please click the [Connect] button to connect with a CoCo device.

Vibration Diagnostic System Synchronization Wizard | Database: smart

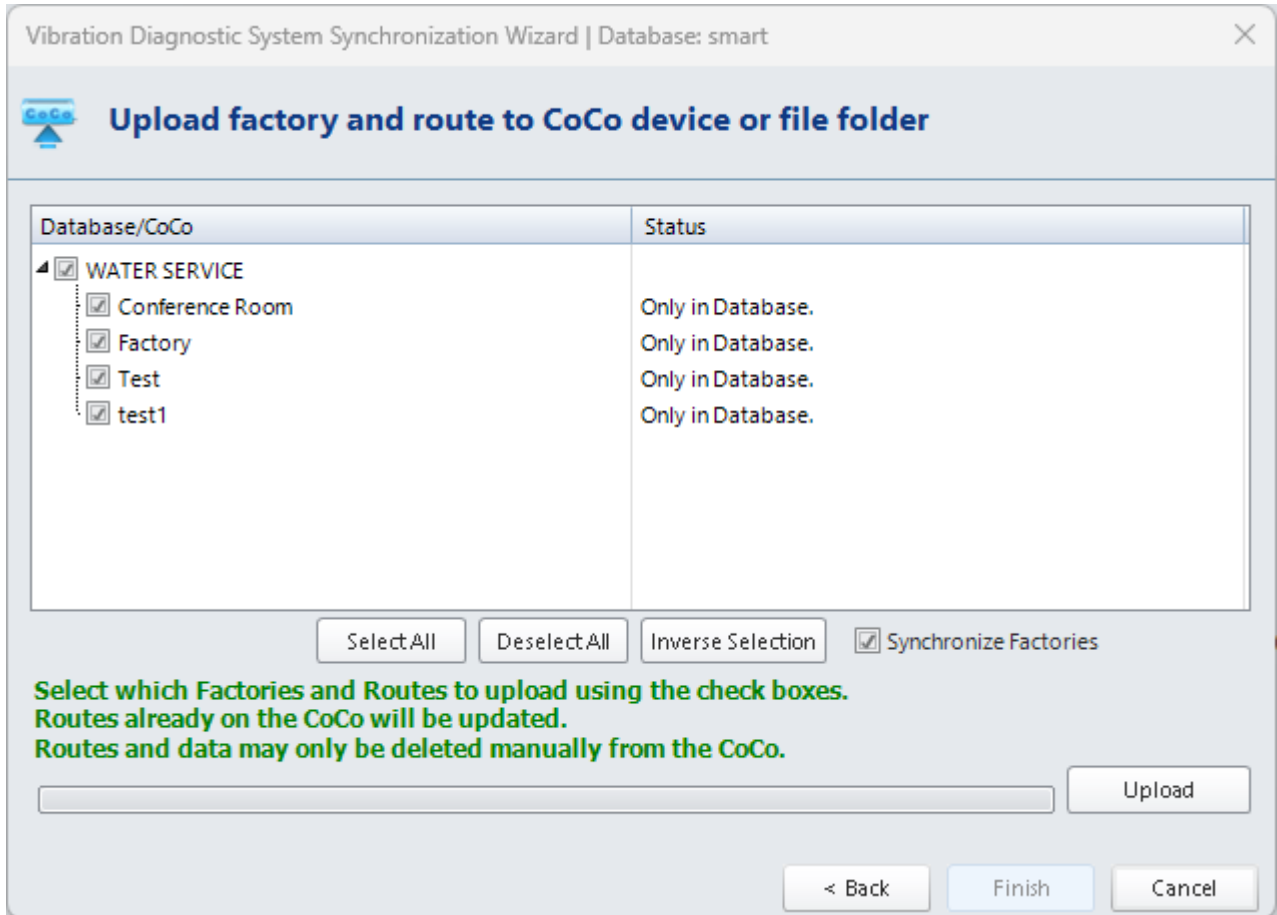
 **Select an option**

What do you want to do?

Load Factories and Routes

Sync Note Codes

Delete Data



1. First Connect your CoCo device by ethernet to your PC.
2. In VDS, click **Data Collector** > in the **Devices** menu, click **Load** > Click **CoCo device** > **Select the Device you are using** > Click **Next** > Click **Load Factories and Routes** > Click **Next**
3. Your VDS will have Factories and Routes to choose to upload to your CoCo device. **Select options to upload** > Click **Upload** > Click **Finish**

To Unload, follow the same steps from above after clicking **Unload** from the **Devices** menu.

From:

<https://help.go-ci.com/> - **Crystal Instruments Help**

Permanent link:

<https://help.go-ci.com/vds:transfer?rev=1734725702>

Last update: **2024/12/20 20:15**