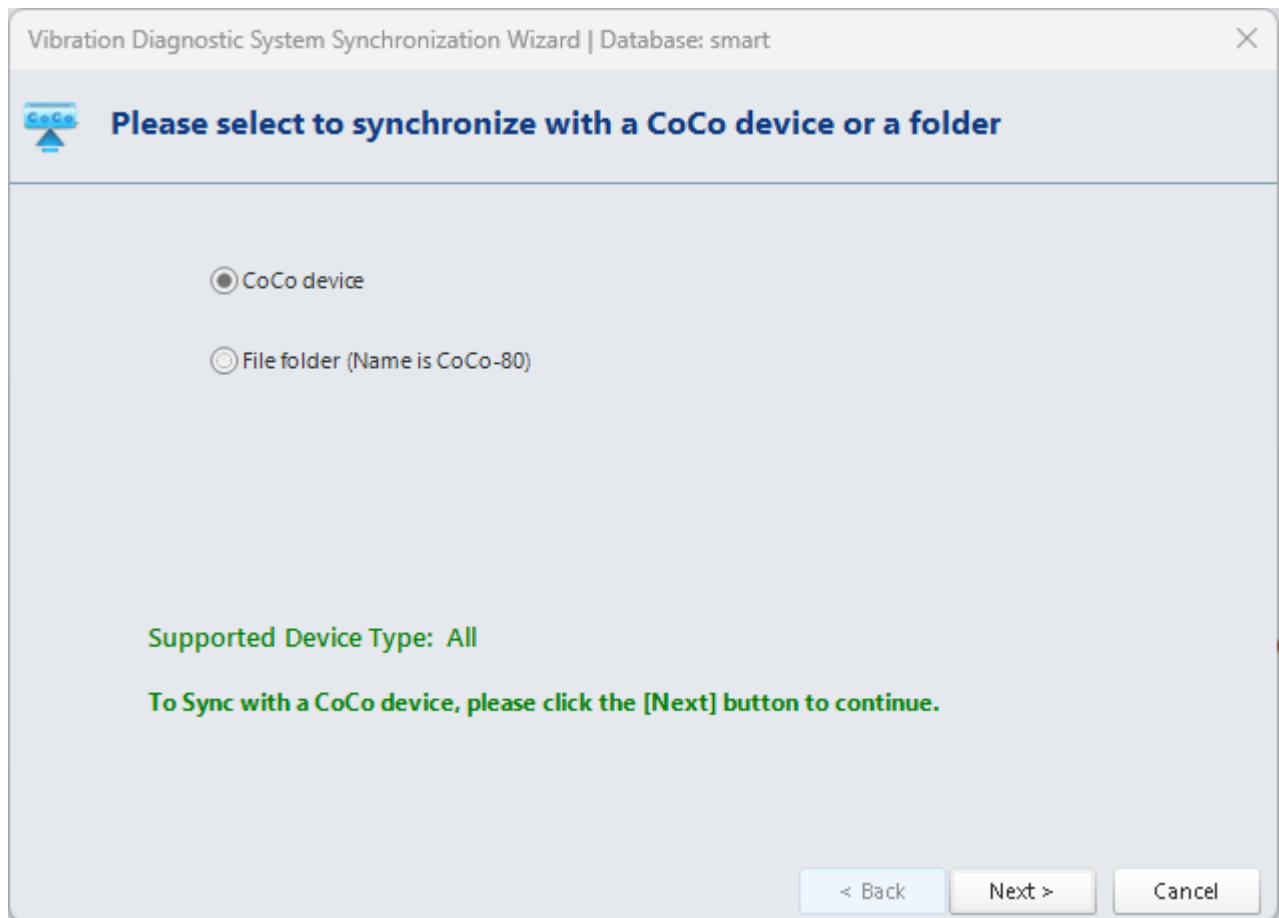



Loading and Unloading Data from CoCo

vds:loadunloadcoco0.png



Vibration Diagnostic System Synchronization Wizard | Database: smart



Please select a CoCo device and click the [Connect] button

Refresh CoCo device List

Refresh CoCo Device Status

33051 - [Ethernet]

Connect


Please click the [Connect] button to connect with a CoCo device.

< Back

Next >

Cancel

Vibration Diagnostic System Synchronization Wizard | Database: smart



Select an option

What do you want to do?

☒ Load Factories and Routes

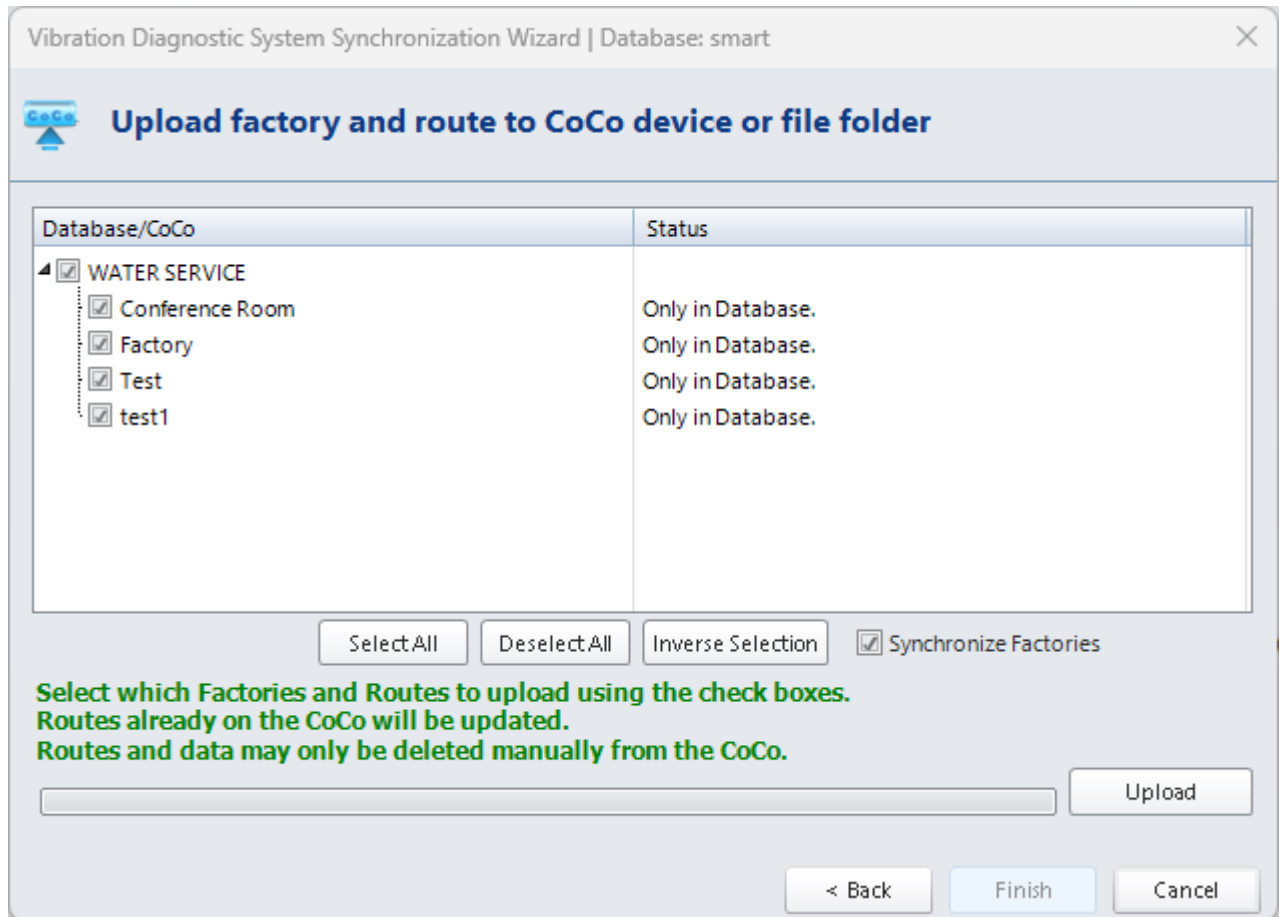
☐ Sync Note Codes

☐ Delete Data

< Back

Next >

Cancel



1. First Connect your CoCo device by ethernet to your PC.
2. In VDS, click **Data Collector** > in the **Devices** menu, click **Load** > Click **CoCo device** > **Select the Device you are using** > Click **Next** > Click **Load Factories and Routes** > Click **Next**
3. Your VDS will have Factories and Routes to choose to upload to your CoCo device.
Select options to upload > Click **Upload** > Click **Finish**

To Unload, follow the same steps from above after clicking **Unload** from the **Devices** menu.

From:

<https://help.go-ci.com/> - **Crystal Instruments Help**

Permanent link:

<https://help.go-ci.com/vds:transfer?rev=1734727144>

Last update: **2024/12/20 20:39**